



## Daneshill House, 1 Waterloo Road, Uxbridge, UB8 2FD

- EPC Rating - B
- Available Early October 2024
- Large Apartment
- Gated Development
- Modern Throughout
- Furnished
- Students Welcome
- Canal-side Apartment
- Parking
- Truly Stunning Apartment

**£1,500 PCM**

Cameron Estate Agents  
195 High Street,  
Middlesex, Uxbridge, UB8 1LB

E: [uxbridge@cameron.co](mailto:uxbridge@cameron.co)  
T: 01895252000

[www.cameron.co](http://www.cameron.co)



**Description**

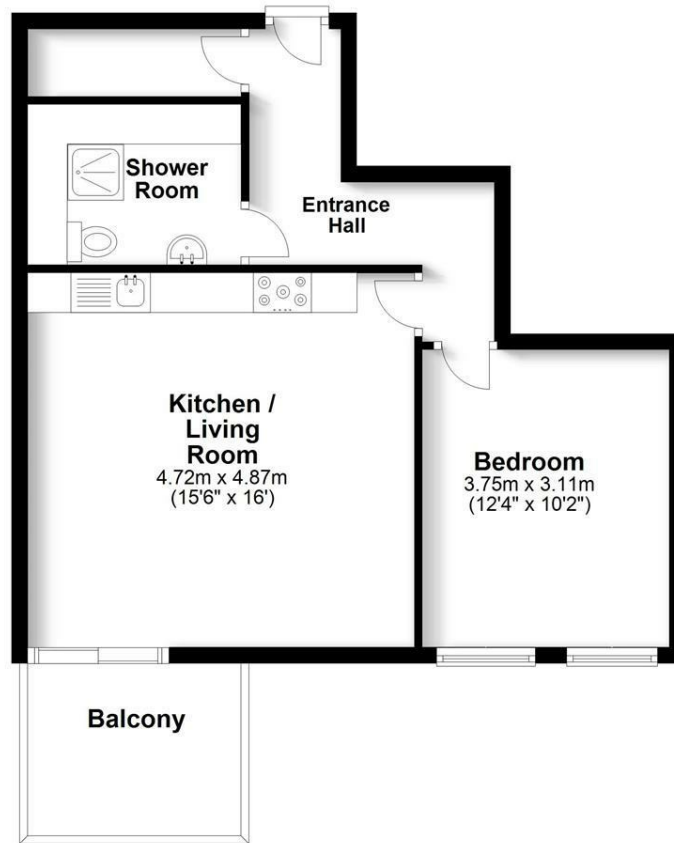
Cameron are delighted to offer this truly stunning, one bedroom apartment located close to Uxbridge Town. Built by award winning Howarth Homes, this spectacular apartment has been finished to a high standard through-out. Offering canal side views and located on the first floor this property comprises; integrated kitchen appliances with stone work tops and an instant hot water tap. The kitchen is open plan to the living room which leads to a balcony overlooking the Grand Union Canal. Also offered, a generously sized double bedroom filled with light and space and a modern shower room with heated towel-rail. Further advantages; parking, secure entry phone system, gated development and gas central heating. Also offering easy access to Uxbridge Town Centre which offers a range of transport links including Uxbridge Underground Station, Brunel University and major road links including the A40/M40 and M25. Available early October 2024.

**IMPORTANT NOTICE**

These particulars have been prepared upon information supplied by the Vendor and should be verified by your surveyors and solicitors. In accordance with the Property Misdescriptions Act 1991 we have prepared these sales particulars as a general guide to give a broad description of the property. They are not intended to constitute part of an offer or contract. We have not carried out a structural survey and the services, appliances and specific fittings have not been tested. All photographs, measurements, floor plans and distances referred to are given as a guide only and should not be relied upon for the purchase of carpets or any other fixtures or fittings. Lease details service charge and ground rent (where applicable) are given as a guide only and should be checked and confirmed by your solicitor prior to exchange of contract

## First Floor

Approx. 50.3 sq. metres (541.3 sq. feet)



Total area: approx. 50.3 sq. metres (541.3 sq. feet)

# Cameron



Whilst every care has been taken to ensure the accuracy of these particulars, none of the statements contained herein are to be relied upon as representations of fact. These particulars do not constitute an offer or contract.