



Suffield Road, High Wycombe, HP11 2FR

- Newly Built
- Modern Finish
- First Floor
- Moments From High Wycombe Station
- Unfurnished
- Stunning Apartment
- Integrated Kitchen Appliances
- Secure Parking
- Two Double Bedrooms
- Secure Entry Phone System

£1,475 PCM

Cameron Estate Agents
195 High Street,
Middlesex, Uxbridge, UB8 1LB

E: uxbridge@cameron.co
T: 01895252000

www.cameron.co



Description

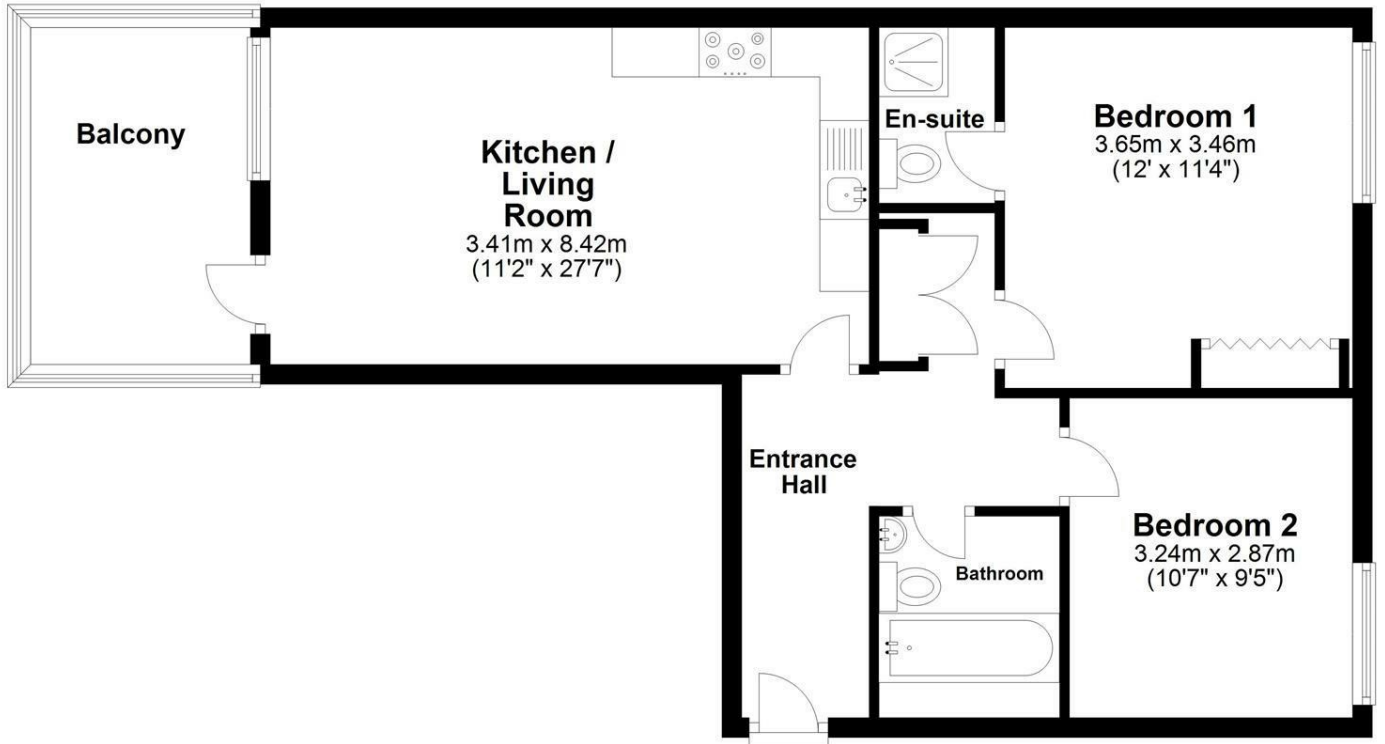
Cameron offer this slick, modern and spacious apartment - We are delighted to present another two bedroom, two bathroom apartment in this stunning development in High Wycombe. Located on the first flooring offering two double bedrooms with built in mirrored wardrobes, two bathrooms with the luxury upgrade of full size mirrors installed. Open plan kitchen/living with all integrated appliances. Further advantages: Large balcony space, secure entry phone system, gas central heating, lifts to all floors and gated parking for one car. Located just moments from High Wycombe Town offering a range of restaurants, retail shops and supermarkets with access to London Marylebone in 40 minutes. Presented to the market unfurnished and available Now

IMPORTANT NOTICE

These particulars have been prepared upon information supplied by the Vendor and should be verified by your surveyors and solicitors. In accordance with the Property Misdescriptions Act 1991 we have prepared these sales particulars as a general guide to give a broad description of the property. They are not intended to constitute part of an offer or contract. We have not carried out a structural survey and the services, appliances and specific fittings have not been tested. All photographs, measurements, floor plans and distances referred to are given as a guide only and should not be relied upon for the purchase of carpets or any other fixtures or fittings. Lease details service charge and ground rent (where applicable) are given as a guide only and should be checked and confirmed by your solicitor prior to exchange of contract

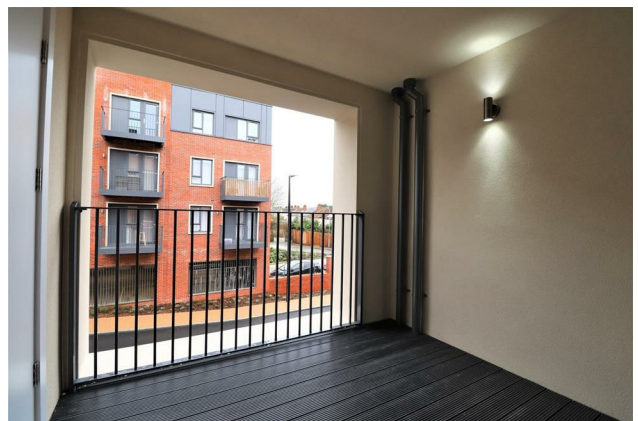
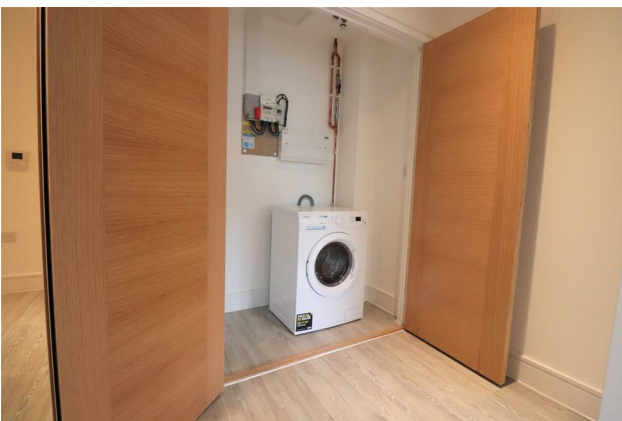
First Floor

Approx. 67.4 sq. metres (725.3 sq. feet)



Total area: approx. 67.4 sq. metres (725.3 sq. feet)

Cameron



Whilst every care has been taken to ensure the accuracy of these particulars, none of the statements contained herein are to be relied upon as representations of fact. These particulars do not constitute an offer or contract.