

# Cameron



## Mead View Close, Harrow, HA1 4GS

- One double bedroom
- Large private balcony
- No upper chain
- Luxury apartment
- Close to Harrow & Wealdstone station
- Modern development

**Asking Price £340,000**

Cameron Estate Agents  
195 High Street,  
Middlesex, Uxbridge, UB8 1LB

E: [uxbridge@cameron.co](mailto:uxbridge@cameron.co)  
T: 01895252000

[www.cameron.co](http://www.cameron.co)



Whilst every care has been taken to ensure the accuracy of these particulars, none of the statements contained herein are to be relied upon as representations of fact. These particulars do not constitute an offer or contract.

**Description**

With a private balcony this first floor one bedroom apartment built by Barratt Homes in the Eastman Village Development is an ideal investment property or first home.

**Accommodation**

The accommodation of apartment briefly comprises, entrance hall, built in storage cupboard housing the washer dryer, open plan living space with a private balcony, modern kitchen featuring handle-less fitted kitchen with stone worktops and instant hot water tap, integrated appliances to include, electric oven, induction hob, dishwasher and fridge freezer, there is a double bedroom and shower room with contemporary white sanitary ware, including mirror fronted storage, shaver socket point, chrome single lever tap to basin, heated towel rail, enclosed bath with thermostatically controlled shower.

**Situation**

The property is located close to all major road links, public transports and local amenities.

**Terms and notification of sale**

Tenure: Leasehold: 997 Years

Service Charge: £2918.26

Ground rent: £0

Local Authority: London Borough of Hillingdon

Council Tax Band: C

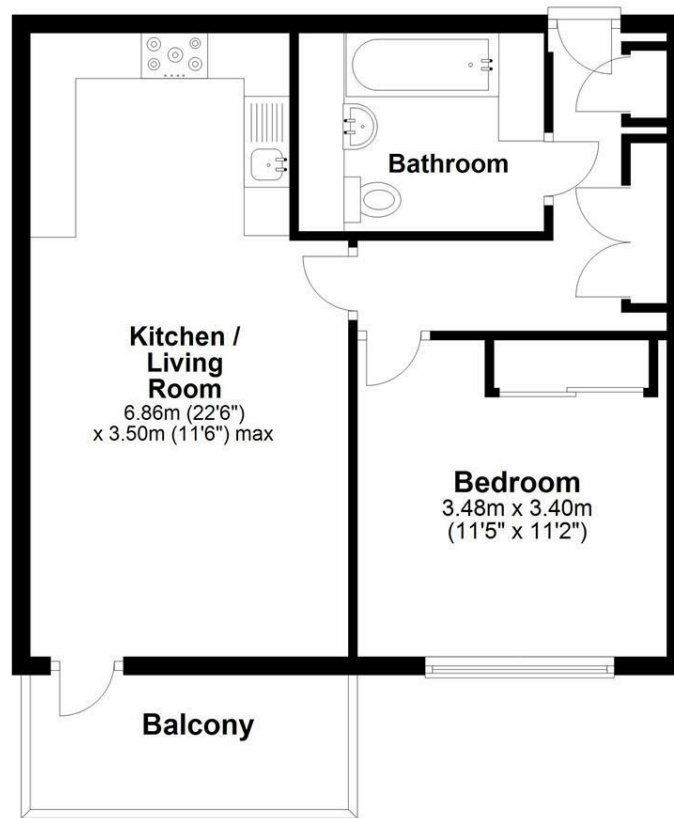
EPC rating: B

**IMPORTANT NOTICE**

These particulars have been prepared upon information supplied by the Vendor and should be verified by your surveyors and solicitors. In accordance with the Property Misdescriptions Act 1991 we have prepared these sales particulars as a general guide to give a broad description of the property. They are not intended to constitute part of an offer or contract. We have not carried out a structural survey and the services, appliances and specific fittings have not been tested. All photographs, measurements, floor plans and distances referred to are given as a guide only and should not be relied upon for the purchase of carpets or any other fixtures or fittings. Lease details service charge and ground rent (where applicable) are given as a guide only and should be checked and confirmed by your solicitor prior to exchange of contract

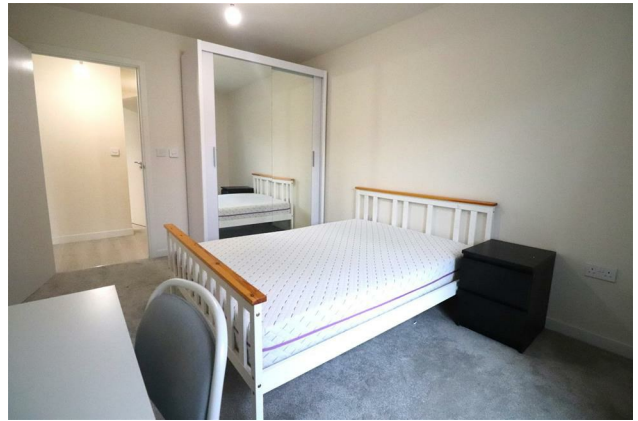
## First Floor

Approx. 48.0 sq. metres (516.6 sq. feet)



Total area: approx. 48.0 sq. metres (516.6 sq. feet)

# Cameron



Whilst every care has been taken to ensure the accuracy of these particulars, none of the statements contained herein are to be relied upon as representations of fact. These particulars do not constitute an offer or contract.