



Kings Mill Way, Denham, Uxbridge, UB9 4BT

- Two Bedrooms
- EPC Rating - C
- Large Private Terrace Space
- Unfurnished
- Luxury Development
- Two Bathrooms
- Available April 2024
- Concierge Service
- Stunning Finish

£1,695 PCM

Cameron Estate Agents
195 High Street,
Middlesex, Uxbridge, UB8 1LB

E: uxbridge@cameron.co
T: 01895252000

www.cameron.co



Whilst every care has been taken to ensure the accuracy of these particulars, none of the statements contained herein are to be relied upon as representations of fact. These particulars do not constitute an offer or contract.

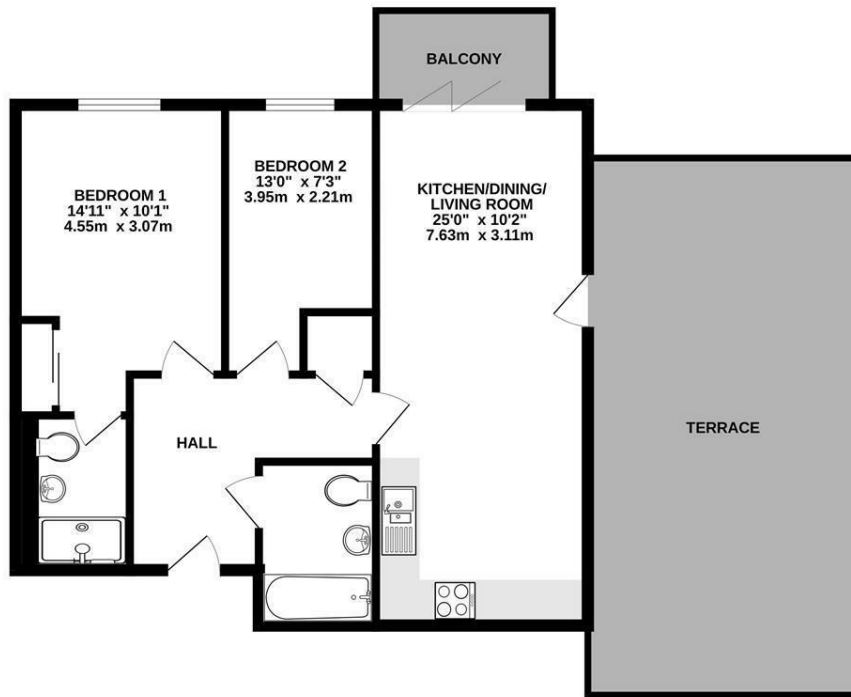
Description

An stunning, luxury apartment situated in a premier development, Kings Island. This two bedroom, two bathroom first floor apartment has been finished to a very high standard, two bedrooms with an en-suite to the master bedroom, second double bedroom, luxury fitted bathroom, open plan reception to a fitted kitchen, bi-folding doors leading out onto a balcony overlooking the canal and further private large terrace. Within a short walk of Uxbridge Town, secure parking, available early April 2024 and presented UNFURNISHED.

IMPORTANT NOTICE

These particulars have been prepared upon information supplied by the Vendor and should be verified by your surveyors and solicitors. In accordance with the Property Misdescriptions Act 1991 we have prepared these sales particulars as a general guide to give a broad description of the property. They are not intended to constitute part of an offer or contract. We have not carried out a structural survey and the services, appliances and specific fittings have not been tested. All photographs, measurements, floor plans and distances referred to are given as a guide only and should not be relied upon for the purchase of carpets or any other fixtures or fittings. Lease details service charge and ground rent (where applicable) are given as a guide only and should be checked and confirmed by your solicitor prior to exchange of contract

1ST FLOOR
652 sq.ft. (60.5 sq.m.) approx.

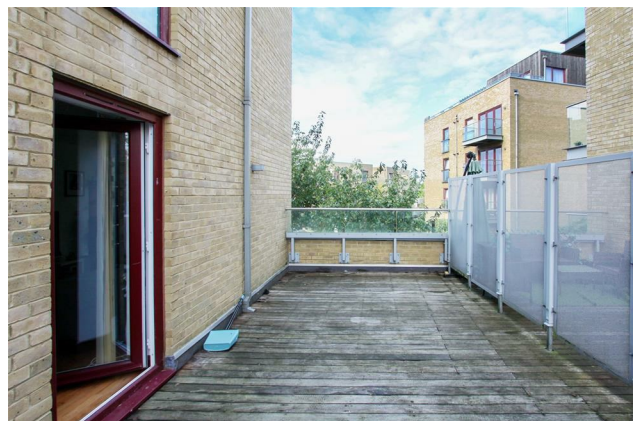


TOTAL FLOOR AREA - 652 sq.ft. (60.5 sq.m.) approx.

Whilst every attempt has been made to ensure the accuracy of the floorplan contained here, measurements of doors, windows, rooms and any other items are approximate and no responsibility is taken for any error, omission or mis-statement. This plan is for illustrative purposes only and should be used as such by any prospective purchaser. The services, systems and appliances shown have not been tested and no guarantee as to their operability or efficiency can be given.
Made with Metropix ©2023



Cameron



Whilst every care has been taken to ensure the accuracy of these particulars, none of the statements contained herein are to be relied upon as representations of fact. These particulars do not constitute an offer or contract.