



Mymmms Drive | Brookmans Park | Hertfordshire | AL9 7AF

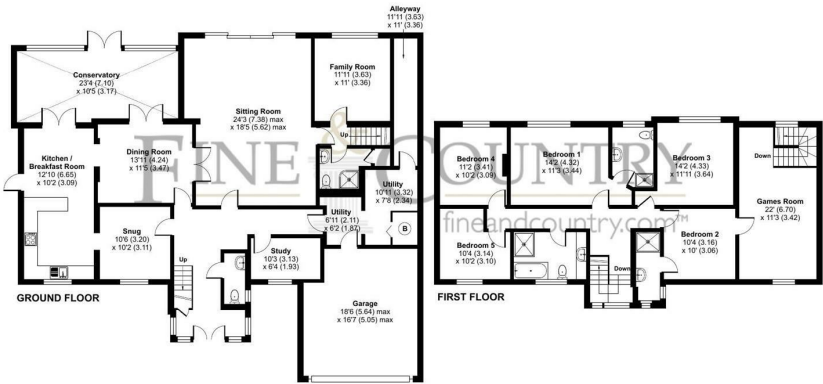
Price Guide £2,250,000

FINE & COUNTRY


Mymms Drive | Brookmans Park
Hertfordshire | AL9 7AF
Price Guide £2,250,000

Set on one of Brookmans Park’s most desirable roads, this spacious six-bedroom detached home sits on a wider-than-average plot and offers a lot of versatile living space backing directly onto Gobions Woods for a peaceful and scenic setting. Gated for privacy, the property features ample off-street parking and a beautifully landscaped 120ft south-facing garden.

- DETACHED FAMILY HOME
- 5 RECEPTION ROOMS
- SOUTH FACING GARDEN
- BACKING ONTO GOBIONS
- 6 BEDROOMS
- WIDE PLOT
- GATED
- DRIVEWAY



Floor plan produced in accordance with RICS Property Measurement 2nd Edition, incorporating International Property Measurement Standards (IPMS2 Residential). © richcom 2025. Produced for Fine & Country. REF: 1264299

Energy Efficiency Rating		
	Current	Potential
Very energy efficient - lower running costs		
(92 plus) A		82
(81-91) B		
(69-80) C		
(55-68) D	54	
(39-54) E		
(21-38) F		
(1-20) G		
Not energy efficient - higher running costs		
England & Wales		EU Directive 2002/91/EC 

The Estate Office
Bradmore Green
Brookmans Park
Hatfield
Hertfordshire
AL9 7QS
01707 662222