



Homewood Avenue | Cuffley | Potters Bar | EN6 4QG

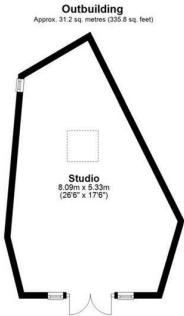
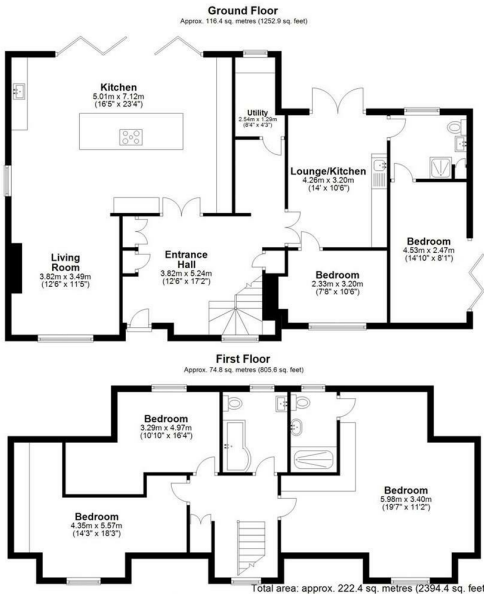
Price Guide £980,000

FINE & COUNTRY

Homewood Avenue | Cuffley
 Potters Bar | EN6 4QG
 Price Guide £980,000

Nestled in the charming village of Cuffley this delightful property offers a perfect blend of modern living and convenience.

- DETACHED FAMILY HOME
 - 3 BEDROOMS UPSTAIRS
 - LARGE GARDEN STUDIO
 - WALKING DISTANCE TO CUFFLEY STATION
- MODERN KITCHEN
 - EN SUITE TO MASTER BEDROOM
 - LARGE DRIVEWAY
 - LOW MAINTENANCE GARDEN



Energy Efficiency Rating		
	Current	Potential
Very energy efficient - lower running costs		
(92 plus) A		
(81-91) B		
(69-80) C		
(55-68) D		
(39-54) E		
(21-38) F		
(1-20) G		
Not energy efficient - higher running costs		
England & Wales	EU Directive 2002/91/EC	

The Estate Office
 Bradmore Green
 Brookmans Park
 Hatfield
 Hertfordshire
 AL9 7QS
 01707 662222