



Auckland Road | | Potters Bar | EN6 3HE

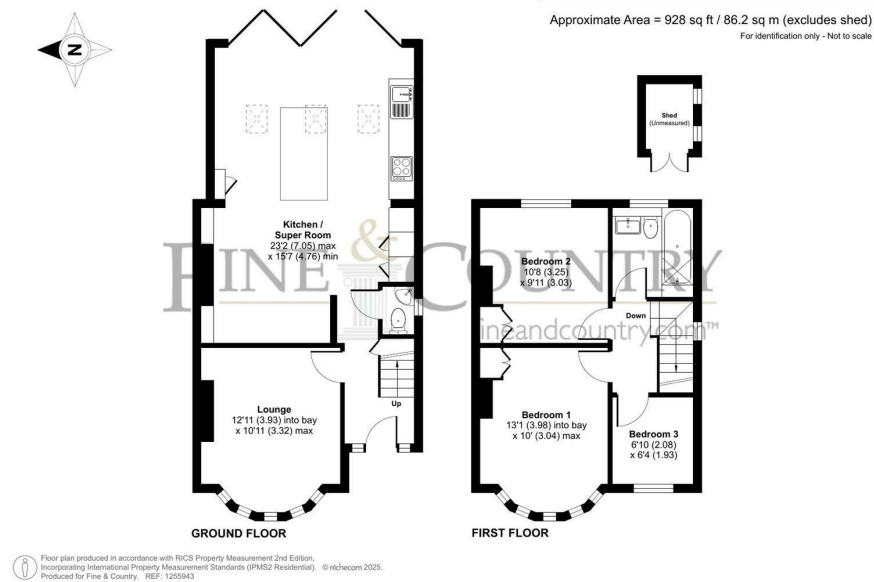
Price Guide £650,000

FINE & COUNTRY

Auckland Road |
Potters Bar | EN6 3HE
Price Guide £650,000

Located in Potters Bar, this delightful three-bedroom (two doubles and one single) semi-detached family home offers a perfect blend of modern living and comfort.

- SEMI DETACHED
- MODERN
- DRIVEWAY WITH CAR CHARGER
- LARGE GARDEN
- 3 BEDROOMS
- SUPER ROOM
- POTENTIAL FOR LOFT EXTENSION (STPP)
- 1 MILE FROM POTTERS BAR STATION AND HIGH STREET



Energy Efficiency Rating		
	Current	Potential
Very energy efficient - lower running costs		
(92 plus) A		87
(81-91) B		
(69-80) C	74	
(55-68) D		
(39-54) E		
(21-38) F		
(1-20) G		
Not energy efficient - higher running costs		
England & Wales	EU Directive 2002/91/EC	

The Estate Office
Bradmore Green
Brookmans Park
Hatfield
Hertfordshire
AL9 7QS
01707 662222