





Calder Avenue

Welcome to this stunning 4-bedroom detached family home located in the charming village of Brookmans Park. The property boasts 4 reception rooms, 2 bathrooms and a spacious open-plan kitchen, diner, and living room.

The property offers flexible living with two reception rooms at the front of the house, as well as the open plan kitchen diner which boasts natural light from the sliding doors leading onto the patio and garden. The living room can be used as a versatile living space to be incorporated or separated from the kitchen diner. From the kitchen, there is access to the utility room and integral garage.

Upstairs are 4 bedrooms one of which is en suite and a separate family bathroom. This super home features a large, secluded rear garden of approx. 140ft where you can relax and unwind and to the front is a generous driveway for convenient parking.

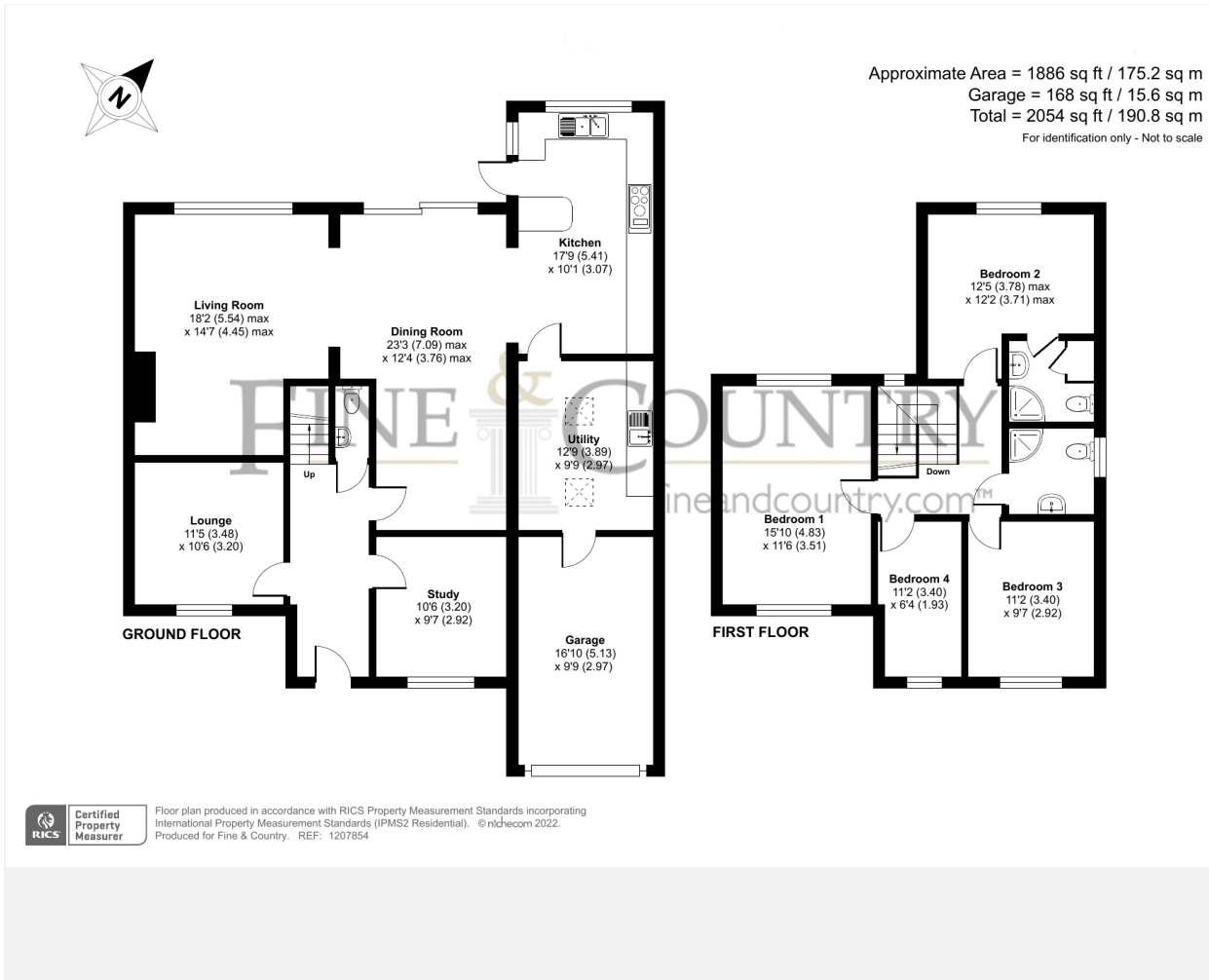
Brookmans Park village offers an array of shops and restaurants as well as a pub and train station with direct access into London. There is also a primary and a secondary school within the village, as well as a selection of private schools nearby. The M25 and A1(M) are a short drive away which adds to the overall convenience of this wonderful home.



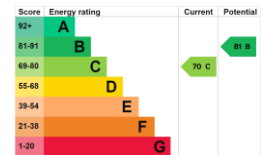
4 4 2

Tenure: Freehold
Council Tax: Band G
Local Authority: Welwyn Hatfield





Agents Note: Whilst every care has been taken to prepare these particulars, they are for guidance purposes only. All measurements are approximate and for general guidance purposes only and whilst every care has been taken to ensure their accuracy, they should not be relied upon and potential buyers/tenants are advised to recheck the measurements



The Estate Office
 Bradmore Green
 Brookmans Park
 Hertfordshire
 AL9 7QS

01707 662222
 fineandcountry.com
 brookmanspark@fineandcountry.com

Opening Hours
 Monday – Friday: 9 - 6pm
 Saturday: 9 - 4pm

