



Heath Road | | Little Heath, Potters Bar | EN6 1LJ

Offers In The Region Of £950,000

FINE & COUNTRY

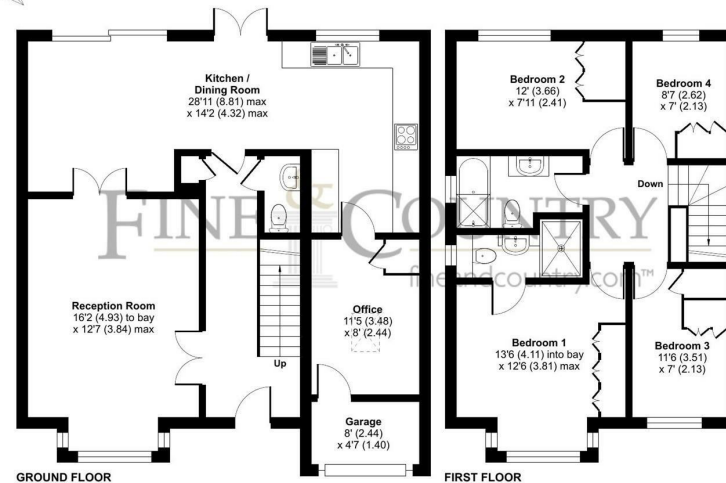
Heath Road |
 Little Heath, Potters Bar | EN6 1LJ
 Offers In The Region Of £950,000

Nestled in the charming area of Little Heath, Potters Bar, this delightful 4-bedroom detached family home is a true gem waiting to be discovered. Recently decorated, this property exudes a fresh and inviting atmosphere that is sure to captivate your heart.

- DETACHED
- SEPARATE UTILITY
- CLOSE TO AMENITIES
- 4 BEDROOMS
- LARGE KITCHEN/DINER
- RECENTLY DECORATED
- DRIVEWAY
- CLOSE TO SCHOOLS



Approximate Area = 1387 sq ft / 128.9 sq m (excludes garage)
 For identification only - Not to scale



Floor plan produced in accordance with RICS Property Measurement Standards incorporating International Property Measurement Standards (IPMS2 Residential). © rinchecom 2024. Produced for Fine & Country. REF: 1166657

Energy Efficiency Rating		Current	Potential
Very energy efficient - lower running costs			
(92 plus) A			
(81-91) B			
(69-80) C		69	80
(55-68) D			
(39-54) E			
(21-38) F			
(1-20) G			
Not energy efficient - higher running costs			
England & Wales		EU Directive 2002/91/EC	

The Estate Office
 Bradmore Green
 Brookmans Park
 Hatfield
 Hertfordshire
 AL9 7QS
 01707 662222

brookmanspark@fineandcountry.co.uk