





Upland Drive

A bright and spacious 3-bedroom detached home in need of modernisation, yet with any necessary planning consents could be enlarged considerably, which gives the purchaser a great chance to create their dream home.

Set behind a row of trees, at the front of this property is a large drive that has plenty of space to park multiple cars with a large garage space.

This property offers lots of original charm and character. Upon entering the hallway there is a downstairs W.C, to the left is the dual aspect living room and connects to the kitchen via the dining space. Once through the kitchen, there is a utility/pantry space along with the back door for access to the westerly facing garden and access to the garage. Upstairs, there are three sizeable bedrooms, two to the rear and one to the front along with a family bathroom.

Located just on the outskirts of Brookmans Park, there are local village shops for your day to day needs and a train station for access into London. Only a short drive away from Welwyn Garden and Potters Bar.



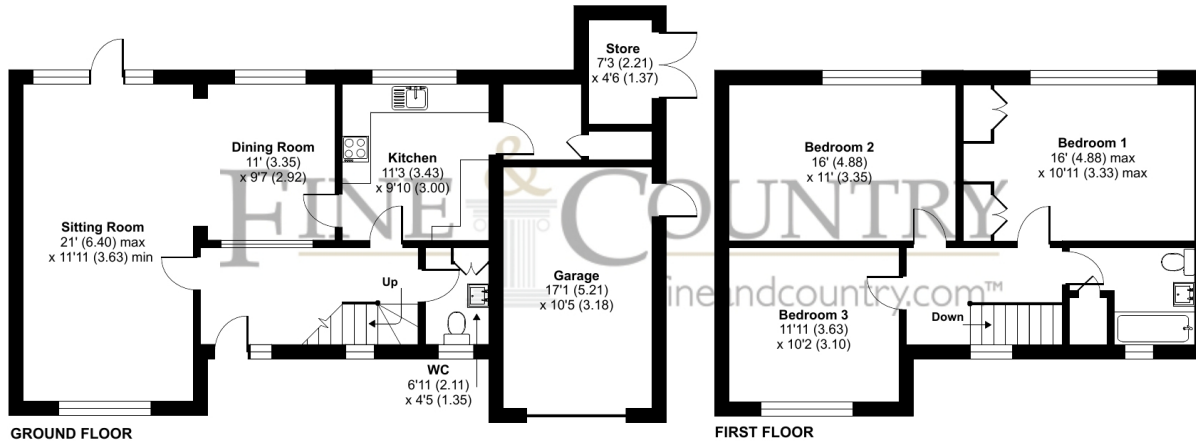


Tenure: Freehold
Council Tax: Band G
Local Authority: Welwyn Hatfield





Approximate Area = 1343 sq ft / 124.7 sq m
 Garage = 178 sq ft / 16.5 sq m
 Outbuilding = 33 sq ft / 3 sq m
 Total = 1554 sq ft / 144.3 sq m
 For identification only - Not to scale



Floor plan produced in accordance with RICS Property Measurement Standards incorporating International Property Measurement Standards (IPMS2 Residential). © n1checom 2024. Produced for Fine & Country. REF: 1088246



Agents Note: Whilst every care has been taken to prepare these particulars, they are for guidance purposes only. All measurements are approximate and for general guidance purposes only and whilst every care has been taken to ensure their accuracy, they should not be relied upon and potential buyers/tenants are advised to recheck the measurements



The Estate Office
 Bradmore Green
 Brookmans Park
 Hertfordshire
 AL9 7QS

01707 662222
 fineandcountry.com
 brookmanspark@fineandcountry.com

Opening Hours
 Monday – Friday: 9 - 6pm
 Saturday: 9 - 4pm

