





Warren Wood Mews

Originally built in circa 1860 this impressive and unique attached residence has been sensitively converted into a delightful 5-bedroom family home offering spacious well-proportioned accommodation with the tower being the property's main focal point.

Entering, there is a welcoming hall with downstairs w.c. a sitting room, good sized kitchen with separate utility room, and a great sized triple aspect living room overlooking the garden.

Upstairs, the master bedroom has an en-suite and fitted wardrobes, there are an additional 4 bedrooms, one of which is split level with an upper floor in the tower section of the home. There is also a family bathroom.

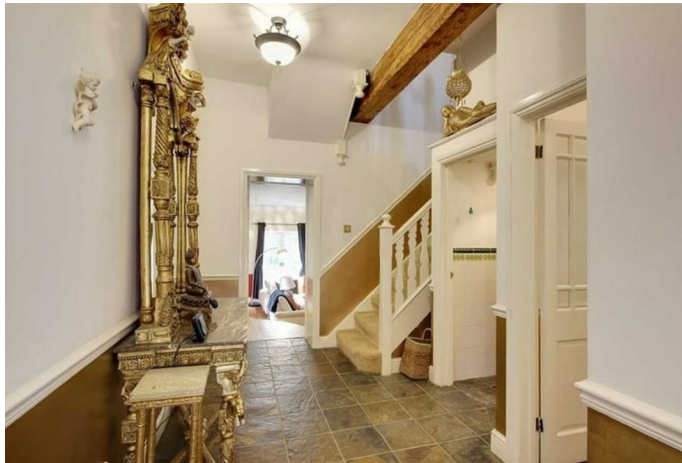
A gravel driveway leads from Kentish Lane before reaching the visitors parking area for the properties within the mews. Here there is a detached double garage en block. Gates then open to the courtyard which provides further parking.

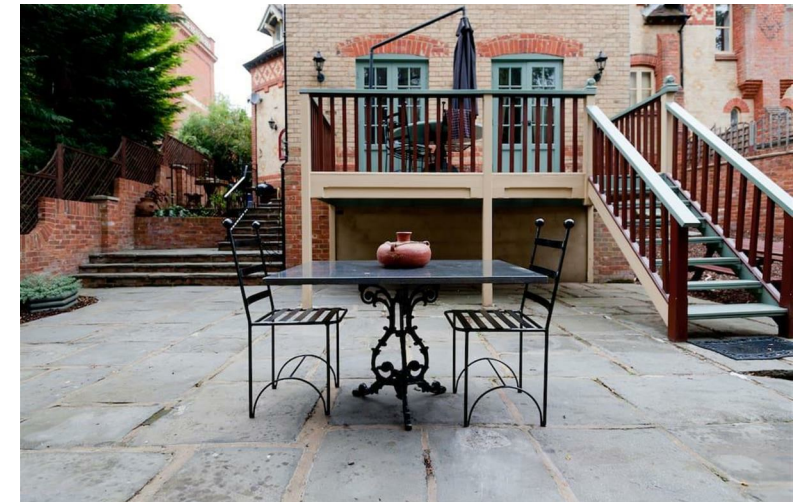
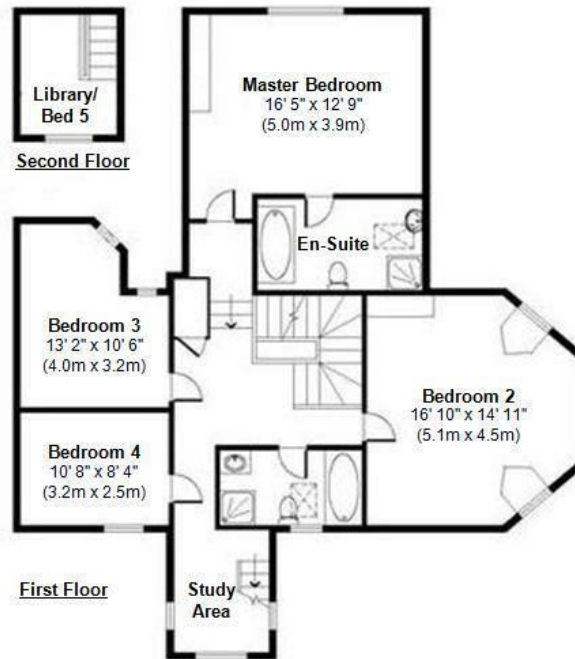
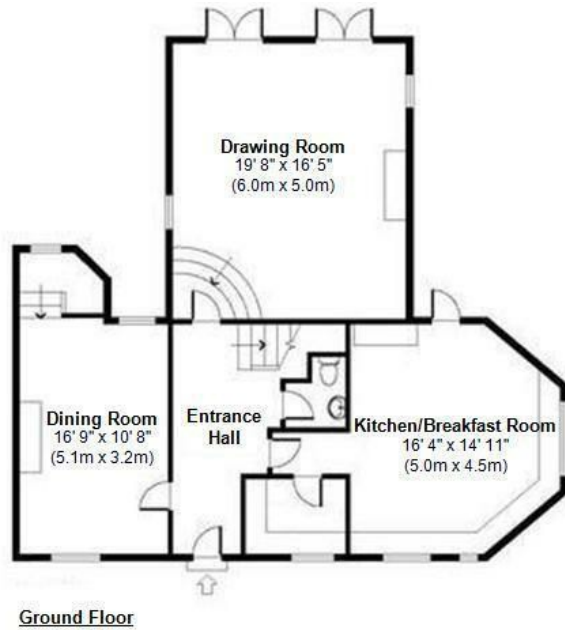


Warrenwood Mews is a private development of exclusive homes accessed via a private road off Kentish Lane. The property provides access to the amenities of Brookmans Park with its choice of shops, restaurants and over ground station.

2 | 5 | 2

Tenure: Freehold
Council Tax Band: G
Local Authority: Welwyn Hatfield District Council





Agents Note: Whilst every care has been taken to prepare these particulars, they are for guidance purposes only. All measurements are approximate and are for general guidance purposes only and whilst every care has been taken to ensure their accuracy, they should not be relied upon and potential buyers/tenants are advised to recheck the measurements.



Brookmans Park Sales
 Bradmore Green
 Brookmans Park
 Hertfordshire
 AL9 7QS

01707 662222

fineandcountry.com
brookmanspark@fineandcountry.com

