





Bluebridge Road

An extended, spacious, and well-presented 4-bedroom semi-detached family home, arranged over 2 floors, with south west facing garden of approx. 70', 4 receptions, potential to convert the loft (subject to any necessary planning approvals) within the heart of this wonderful village.

The hall, with stairs to the first floor, leads onto the living room which has a bay window and fireplace. Double doors lead on to the second reception which in turn opens into the lovely kitchen/diner. The kitchen features a range of base and eye level storage cupboards, space for white goods and there is the dining area, too, which leads out onto the garden. There is also a study a downstairs cloakroom.

All four bedrooms are on the first floor, 3 are double bedrooms and the fourth is a good sized single. There is also an attractive family bathroom. Subject to any necessary planning consents, there is the opportunity of extending into the loft.

To the front is a block paved driveway and lawn. The south west facing garden is approx. 70' in length and features a terrace directly of the property with the rest laid to lawn and an additional terrace at the back of the garden.

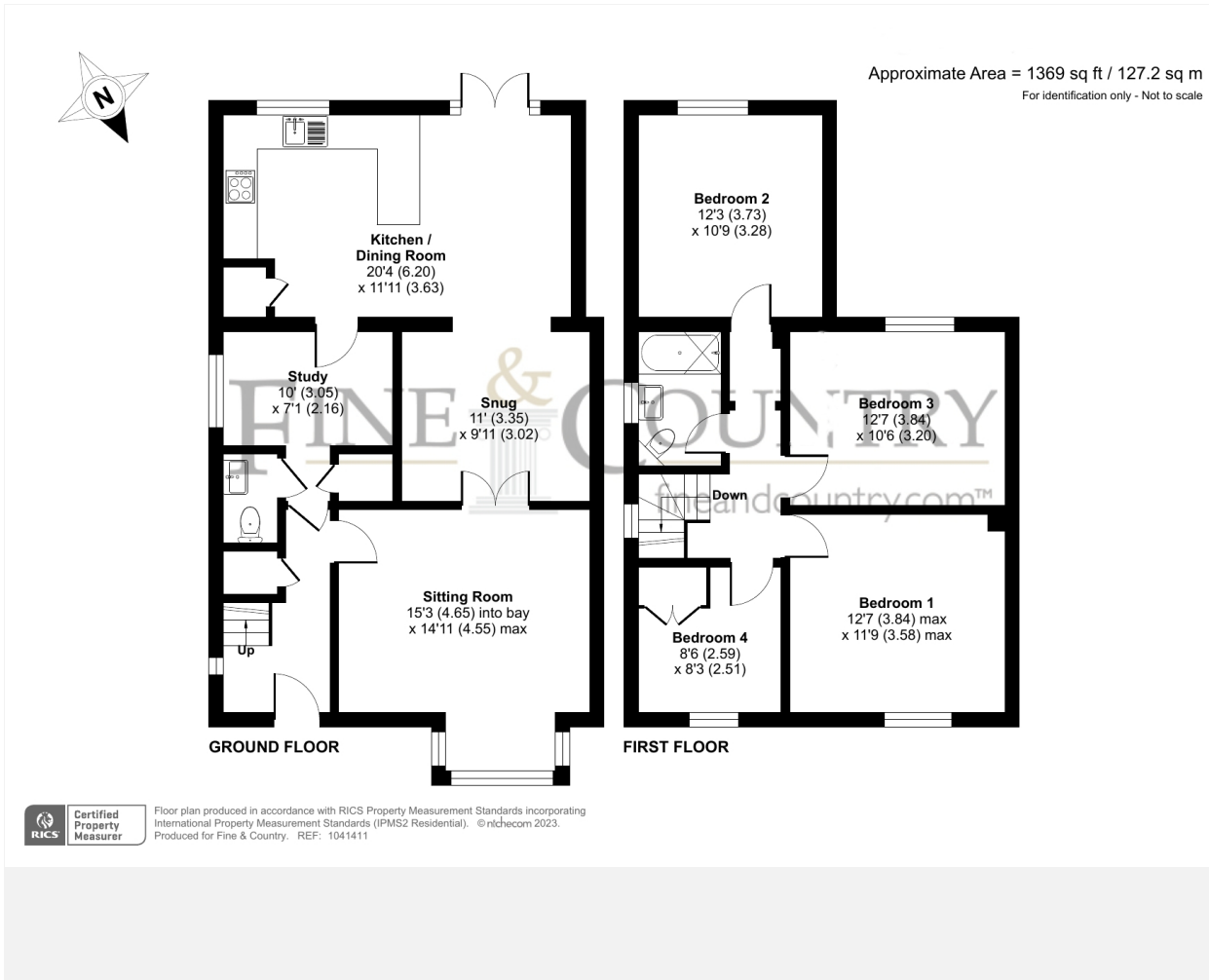


Everything required for day-to-day living, and more besides, is readily available just a 'stone's throw' from the property. There are inviting restaurants and pubs, an independent butchers, bakers, fishmongers, and hardware store along with a variety of other shops catering for everyday needs. Brookmans Park train station is a short walk away serving London's Finsbury Park, Kings Cross, and Moorgate.



Tenure: Freehold
Council Tax: Band E
Local Authority: Welwyn Hatfield





Agents Note: Whilst every care has been taken to prepare these particulars, they are for guidance purposes only. All measurements are approximate and for general guidance purposes only and whilst every care has been taken to ensure their accuracy, they should not be relied upon and potential buyers/tenants are advised to recheck the measurements



The Estate Office
Bradmore Green
Brookmans Park
Hertfordshire
AL9 7QS

01707 662222
fineandcountry.com
brookmanspark@fineandcountry.com

Opening Hours
Monday – Friday: 9 - 6pm
Saturday: 9 - 4pm

