



5 ZETLAND COURT

VICTORIA ROAD, RICHMOND, DL10 4AS

£650 PCM

A First and Second Floor Apartment occupying a tucked away location close to Richmond Market Place. Entrance Hall, Lounge, Kitchen/Dining Room, 2 Double Bedrooms, Study/Bedroom 3, Bathroom/WC, Parking for one small car, Gas Fired Central Heating, UPVC Double Glazing. Council Tax Band C. EER E54. SORRY NO PETS.

NORMAN F. BROWN

Est. 1967

5 ZETLAND COURT

- DECEPTIVELY SPACIOUS • 2 DOUBLE BEDROOMS • STUDY/BEDROOM 3 • PARKING FOR ONE SMALL CAR • GAS CENTRAL HEATING • UPVC DOUBLE GLAZING • HANDY FOR RICHMOND MARKET PLACE • SORRY NO PETS



DESCRIPTION

A First and Second Floor Apartment occupying a tucked away location close to Richmond Market Place. Entrance Hall, Lounge, Kitchen/Dining Room, 2 Double Bedrooms, Study/Bedroom 3, Bathroom/WC, Parking for one small car, Gas Fired Central Heating, UPVC Double Glazing. Council Tax Band C. EER E54. SORRY NO PETS.

GENERAL INFORMATION

TERM 6 months (Assured Shorthold Tenancy) then rolls on, on a monthly basis until terminated by either the tenant or the landlord.

RENT £650 per calendar month in advance, exclusive of council tax and all other outgoings. As part of the application process the referencing agency will carry out reference checks on our behalf and for their affordability calculation they will look for the applicant(s) annual income to be at least 30 times the monthly rent.

DEPOSIT £750.

NOTE The first month's rent and deposit (minus the holding fee) is to be paid directly into our clients account at least 48 hours before sign up. (Please note that we cannot accept card payments).

RESTRICTIONS No Smoking. Sorry no pets.

COUNCIL TAX BAND C. This website shows you the annual charge

<https://www.richmondshire.gov.uk/council-tax-and-business-rates/your-council-tax/council-tax-bands-and-charges/>

CONTENTS INSURANCE The tenant is responsible for arranging their own contents insurance.

APPLICATION PROCESS

All applicants shall be requested to complete detailed application forms. We shall undertake comprehensive reference checks which will include right to rent ID checks in accordance with the Immigration Act 2014. In accordance with the Tenant Fees Act 2019 we request that the prospective tenant(s), to reserve the property and to demonstrate commitment to rent the property whilst reference checks take place, pay(s) a holding deposit to ourselves which is equivalent to not more than one week's rent, which shall be put towards the deposit payable at the start of the tenancy (and shall be held subject to conditions, further details upon request).

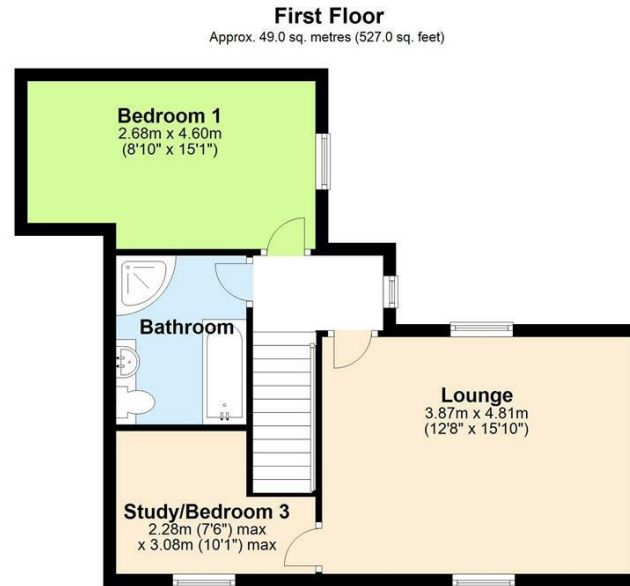
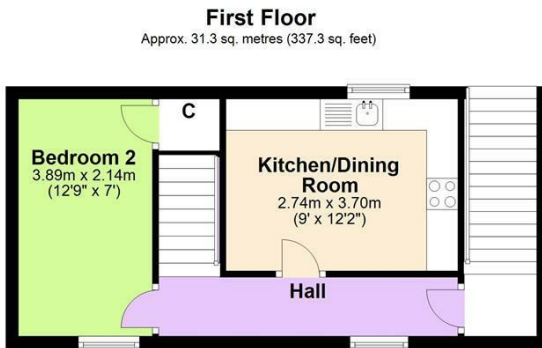
We are a member of the The Property Ombudsman, Milford House, 43-55 Milford Street, Salisbury, SP1 2BP, telephone number 01722333306, fax number 01722332296, email admin@tpos.co.uk, website www.tpos.co.uk

Our clients account details are as follows: NFB & DB
& JF Brown Clients Account, Barclays Bank, 55
Market Place, Richmond, N.Yorkshire, DL10 4JH.
This account is not interest bearing.

As members of the Royal Institution of Chartered
Surveyors (RICS) we carry out a monthly
reconciliation of our clients account and are activities
are subject to monitoring under the institutions
conduct and disciplinary regulations. The RICS
operates a clients money protection scheme of which
we are a member (further details available upon
request).

5 ZETLAND COURT





Total area: approx. 80.3 sq. metres (864.3 sq. feet)



Energy Efficiency Rating		
	Current	Potential
Very energy efficient - lower running costs		
(92 plus) A		
(81-91) B		
(69-80) C		75
(55-68) D		
(39-54) E	54	
(21-38) F		
(1-20) G		
Not energy efficient - higher running costs		
England & Wales	EU Directive 2002/91/EC	

Agents Note: Whilst every care has been taken to prepare these particulars, they are for guidance purposes only. All measurements are approximate and are for general guidance purposes only and whilst every care has been taken to ensure their accuracy, they should not be relied upon and potential buyers/tenants are advised to recheck the measurements

Richmond Office Lettings
14 Queens Road
Richmond
North Yorkshire
DL10 4AG

01748 822473
richmond@normanfbrown.co.uk
www.normanfbrown.co.uk

NORMAN F.BROWN

Est. 1967