

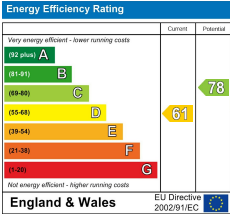


Hillside Gardens, Edgware, HA8 8HE
£925,000 Freehold Council Tax Band

REAL ESTATES
Est.1981

Estate Agents · Residential Sales · Investments · Lettings

A stunning double fronted 5 Bedroom semi detached curton built family home, located at the Purcells Avenue end of Hillside Gardens making it accessible to local amenities and transport links. The ground floor boasts a double reception room, contemporary Kosher kitchen/breakfast room, study, utility room and guest wc. Upstairs the home comprises five bedrooms, family bathroom and an ensuite shower room.



Real Estates Woodside Park Office:
14/14a Sussex Ring
Woodside Park N12 7HX

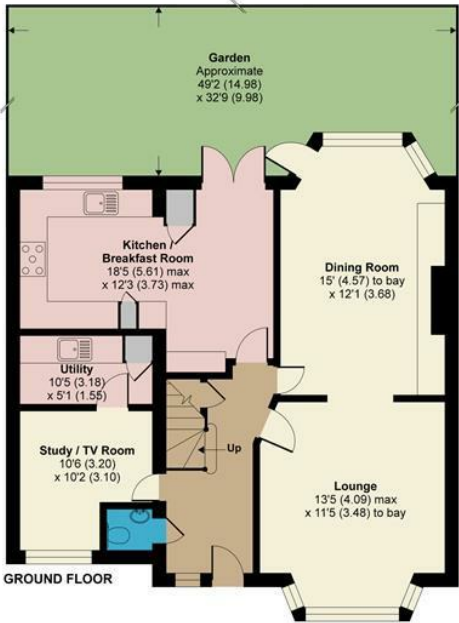
Il : 020 8445 6387
e : info@realestates-wsp.co.uk
w : www.realestates-wsp.co.uk



Hillside Gardens, Edgware, HA8 8HE

Approximate Area = 1710 sq ft / 158.8 sq m

For identification only - Not to scale



Floor plan produced in accordance with RICS Property Measurement Standards incorporating International Property Measurement Standards (IPMS2 Residential). © nichecom 2021. Produced for Melvin Jacobs Estate Agents. REF: 788688