



Ashbourne Close, Woodside Park, N12 8SB
Per Calendar Month £2,710 Per Calendar Month Council Tax Band E

REAL ESTATES
Est.1981

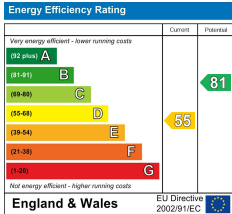
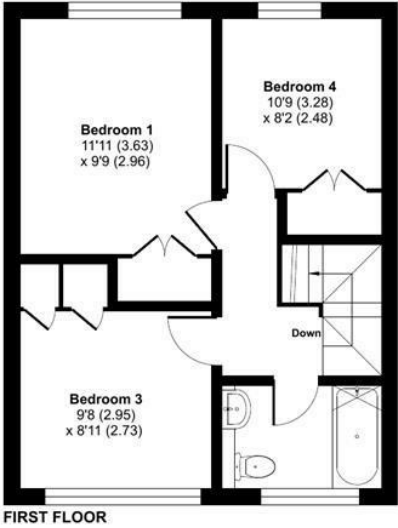
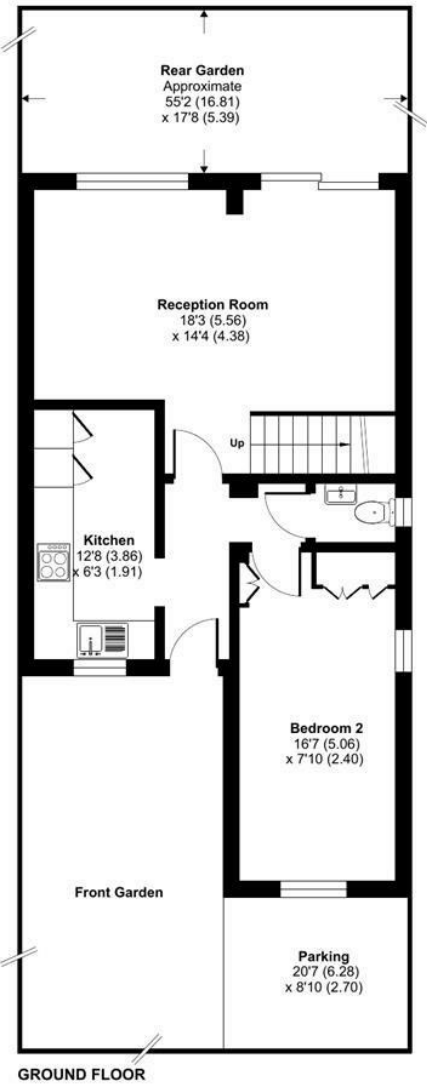
Estate Agents · Residential Sales · Investments · Lettings

Situated within a stone's throw to Woodside Park Northern Line tube station, this end of terrace house comprises 3 bedrooms, fitted kitchen, reception with access to rear garden, bathroom/wc, and off street parking.

AVAILABLE NOW * UNFURNISHED *

Ashbourne Close, London, N12

Approximate Area = 954 sq ft / 88.6 sq m
For identification only - Not to scale



Floor plan produced in accordance with RICS Property Measurement 2nd Edition, Incorporating International Property Measurement Standards (IPMS2 Residential). © richcom 2025. Produced for Real Estates. REF: 1361496