



Sanders Lane, Mill Hill, NW7 1BJ
Guide Price £525,000 Leasehold Council Tax Band E

REAL ESTATES
Est. 1981

Estate Agents · Residential Sales · Investments · Lettings

Real Estates are delighted to present this MODERN TWO BEDROOM TWO BATHROOM FIRST FLOOR APARTMENT located in the heart of Mill Hill East.

Totalling just over 750 square feet, this property benefits from a spacious open plan kitchen diner living area providing access onto the SOUTH FACING PRIVATE BALCONY. There are two excellently-sized double bedrooms, one with an EN-SUITE BATHROOM and the other with a WALK-IN-WARDROBE, as well as the main bathroom.

There is a secure UNDERGROUND PARKING SPACE plus availability on the street outside for guests.

Tamarind Court is just a stone's throw from Mill Hill East Northern Line Tube Station. Waitrose and Virgin Active Gym are within easy reach, whilst Bittacy Hill Park offers nearby green space.

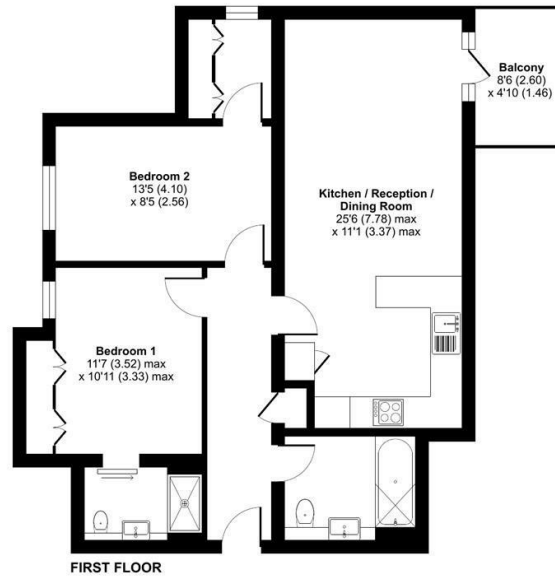
SOLE AGENT





Sanders Lane, London, NW7

Approximate Area = 753 sq ft / 69.9 sq m
For identification only - Not to scale



Floor plan produced in accordance with RICS Property Measurement 2nd Edition, incorporating International Property Measurement Standards (IPMS2 Residential). © nichcom 2025. Prepared for Real Estates. REF: 1343764

Energy Efficiency Rating		Current	Potential
Very energy efficient - lower running costs			
A	92-100	85	85
B	81-91		
C	69-80		
D	55-68		
E	39-54		
F	21-38		
G	1-20	Not energy efficient - higher running costs	
EU Directive			

