



74 Holden Road, Woodside Park, N12 7DY
£2,000 Per Calendar Month Council Tax Band D

REAL ESTATES
Est.1981

Estate Agents · Residential Sales · Investments · Lettings

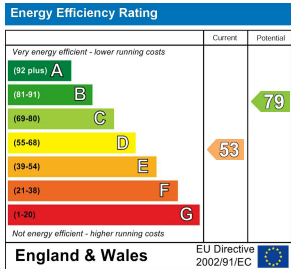
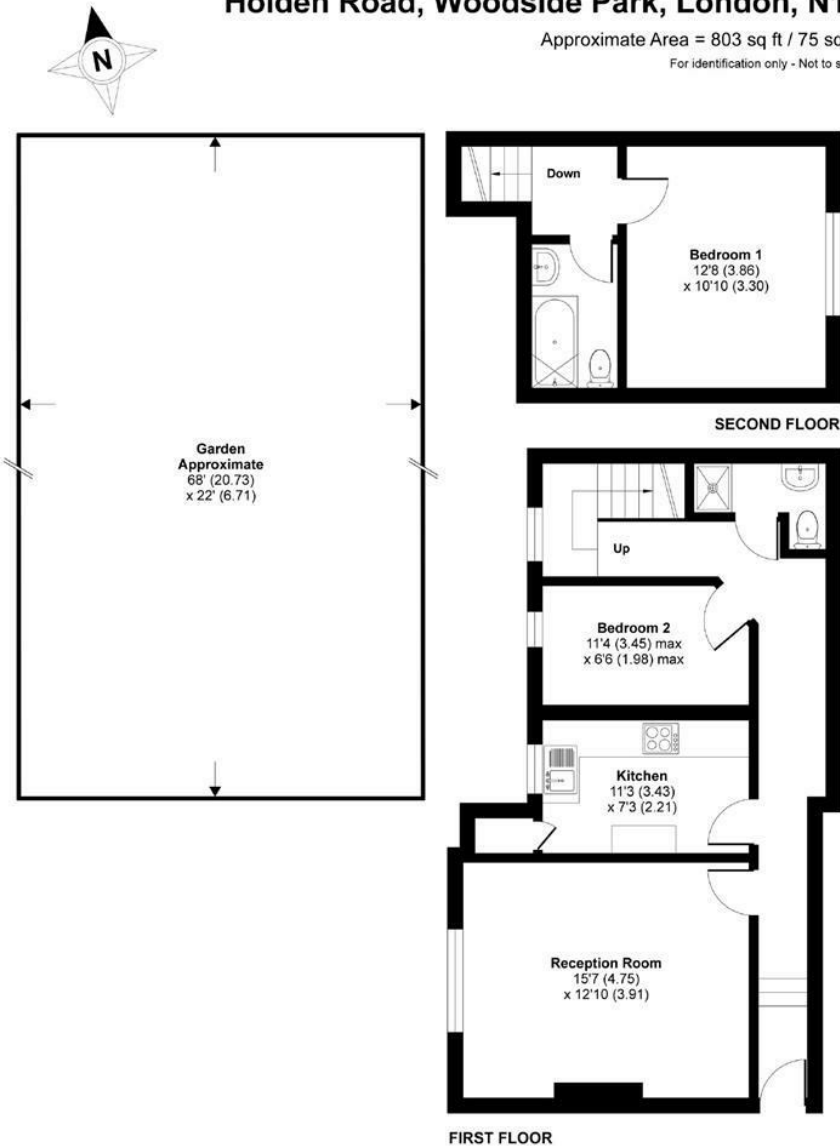
* AVAILABLE FROM 16 SEPTEMBER * UNFURNISHED* A 2
BEDROOM 2 BATHROOM DUPLEX (1st and 2nd floor) CONVERSION
APARTMENT with the benefit of its own PARKING SPACE and SECTION
OF REAR GARDEN.

The 1st floor accommodation provides a lounge, fitted kitchen, bedroom and
shower room. A further bedroom and bathroom is on the 2nd floor.

Conveniently situated close to Woodside Park Northern Line tube station, local
cafes, shops, bus services and parkland.

Holden Road, Woodside Park, London, N12

Approximate Area = 803 sq ft / 75 sq m
For identification only - Not to scale



Floor plan produced in accordance with RICS Property Measurement Standards incorporating International Property Measurement Standards (IPMS2 Residential). © richcom 2021. Produced for Real Estates. REF: 768591