



Walmington Fold, Woodside Park, N12 7LD  
£3,000 Per Calendar Month      Council Tax Band F

**REAL ESTATES**  
Est.1981

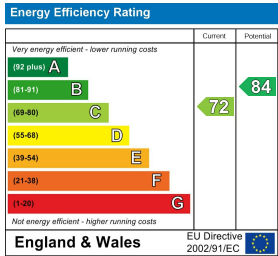
Estate Agents · Residential Sales · Investments · Lettings



A 3 BEDROOM SEMI-DETACHED family home, in this sought after residential road in the heart of Woodside Park.

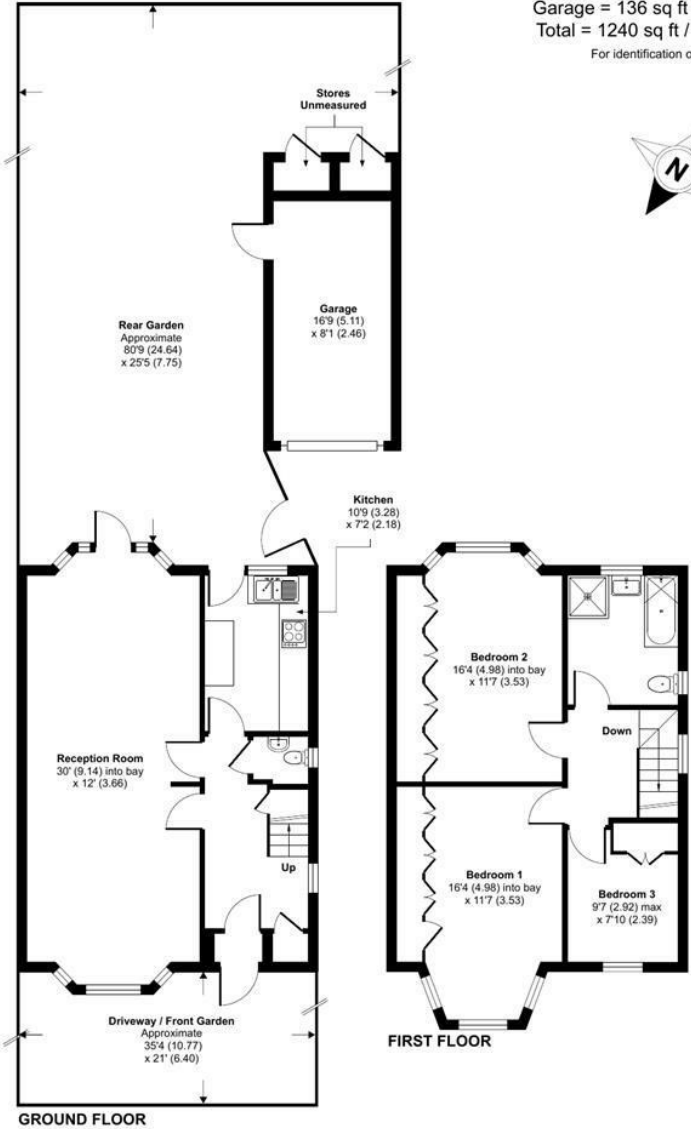
Local shops, cafes, bus services and Woodside Park Northern Line tube station are all within a short walk.

- \* THRU LOUNGE/DINING ROOM \* FITTED KITCHEN \* GUEST CLOAKROOM \* 3 BEDROOMS \* BATHROOM/WC \* REAR GARDEN
- \* OFF STREET PARKING \* PART FURNISHED \* AVAILABLE NOW\*



Walmington Fold, London, N12

Approximate Area = 1104 sq ft / 102.5 sq m (excludes stores)  
Garage = 136 sq ft / 12.6 sq m  
Total = 1240 sq ft / 115.1 sq m  
For identification only - Not to scale



Certified Property Measurer

Floor plan produced in accordance with RICS Property Measurement Standards incorporating International Property Measurement Standards (IPMS2 Residential). © nichecom 2024. Produced for Real Estates. REF: 1109772