



Woodside Grange Road, London, N12 8LR
Per Calendar Month £1,650 Per Calendar Month Council Tax Band E

REAL ESTATES
Est.1981

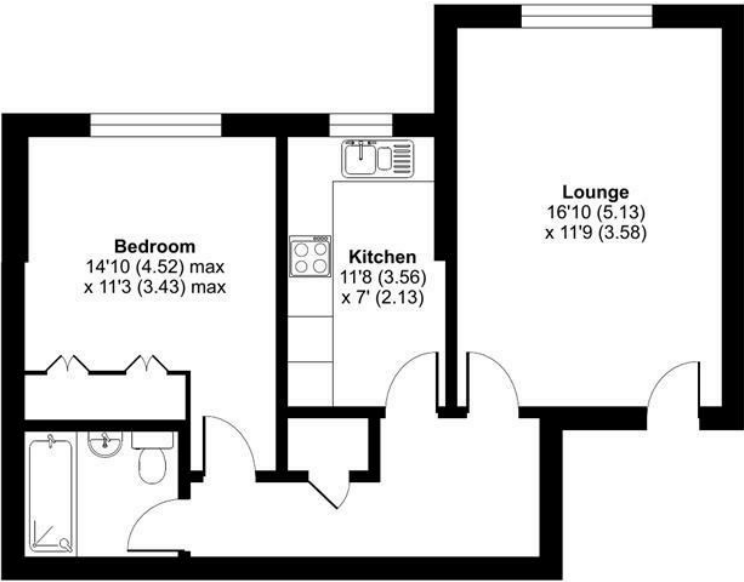
Estate Agents · Residential Sales · Investments · Lettings

*AVAILABLE NOW * UNFURNISHED * A well presented newly decorated 1 BEDROOM SECOND FLOOR flat close to Woodside Park Northern Line tube station and local shops.

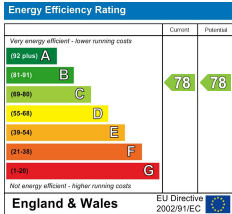
- * LARGE RECEPTION ROOM * FITTED KITCHEN * BEDROOM with FITTED WARDROBES * BATHROOM * ALLOCATED PARKING SPACE
- * WELL MAINTAINED COMMUNAL GARDENS *

Woodside Grange Road, London, N12

Approximate Area = 570 sq ft / 53 sq m
For identification only - Not to scale



SECOND FLOOR



Floor plan produced in accordance with RICS Property Measurement 2nd Edition, Incorporating International Property Measurement Standards (IPMS2 Residential). © richcom 2025. Produced for Real Estates. REF: 1299013