



Essex Park, West Finchley, N3 1ND
£4,300 Per Calendar Month Council Tax Band F

REAL ESTATES
Est.1981

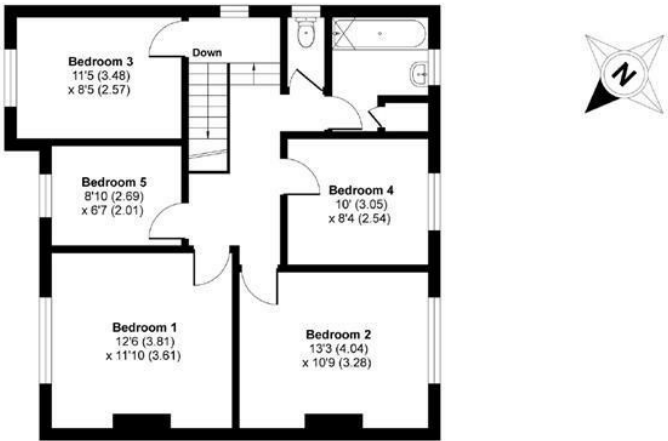
Estate Agents · Residential Sales · Investments · Lettings

* AVAILABLE 27TH JUNE * PART FURNISHED* A 5 BEDROOM (4 DOUBLES) 2 BATHROOM DETACHED FAMILY HOME conveniently located close to West Finchley Northern Line tube station, shopping facilities at Finchley Central and Tally Ho Corner, as well as popular primary and secondary schools.

* GUEST CLOAK/SHOWER ROOM * THRU LOUNGE/DINING ROOM * CONSERVATORY * FITTED KITCHEN * 5 BEDROOMS * FAMILY BATHROOM * SEPARATE WC * GARAGE * OWN DRIVEWAY * REAR GARDEN * AVAILABLE 27TH JUNE *

Essex Park, London, N3

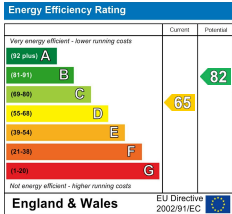
Approximate Area = 1655 sq ft / 154 sq m (includes garage)
For identification only - Not to scale



FIRST FLOOR



GROUND FLOOR



Floor plan produced in accordance with RICS Property Measurement Standards incorporating International Property Measurement Standards (IPMS2 Residential). © nichcom 2021. Produced for Real Estates. REF: 690119