



Holden Avenue, Woodside Park, N12 8HY  
 £2,100 Per Calendar Month      Council Tax Band E

**REAL ESTATES**  
 Est.1981

Estate Agents · Residential Sales · Investments · Lettings

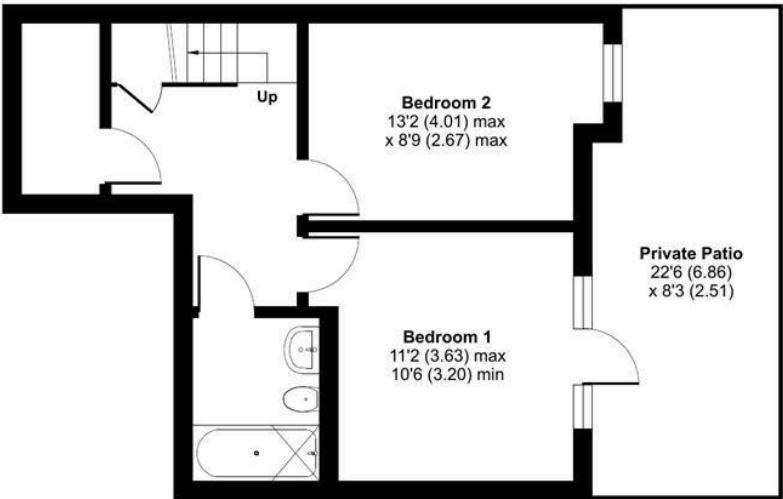
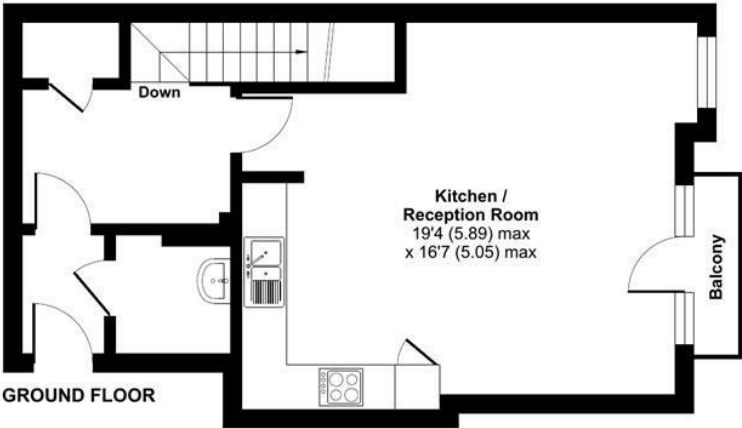


\* FURNISHED \* A modern 2 bedroom ground floor duplex apartment, situated within a short walk to Woodside Park Northern Line tube station, local shops, bus services and parkland.

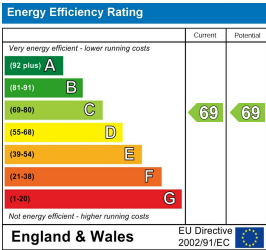
\* 2 DOUBLE BEDROOMS \* FITTED WARDROBES \* ACCESS TO PRIVATE TERRACE \* MODERN BATHROOM \* LARGE OPEN PLAN LOUNGE WITH FITTED KITCHEN AND BALCONY \* SECURE ALLOCATED PARKING SPACE \* WOOD FLOORING \* DOUBLE GLAZING \* AVAILABLE 17TH JUNE \* FURNISHED \*

Holden Avenue, London, N12

Approximate Area = 897 sq ft / 83.3 sq m  
For identification only - Not to scale



LOWER GROUND FLOOR



Floor plan produced in accordance with RICS Property Measurement Standards incorporating International Property Measurement Standards (IPMS2 Residential). © nichecom 2024. Produced for Real Estates. REF: 1110049