



Peacock Close, Mill Hill, NW7 1LG
Guide Price £450,000 Leasehold Council Tax Band E

REAL ESTATES
Est. 1981

Estate Agents · Residential Sales · Investments · Lettings

* CHAIN FREE * Real Estates are delighted to bring to the market this 2 BEDROOM GROUND FLOOR APARTMENT in a well-maintained purpose-built block on the popular Millbrook Park development in Mill Hill East.

This modern property offers spacious living with a large reception room leading to a private patio.

Key features include 1 allocated parking space, 2 bathrooms and a fully fitted kitchen. Both bedrooms benefit from built-in wardrobes, offering ample storage.

Ideally located within walking distance of Mill Hill East Northern Line tube station, Virgin Active Gym, and Waitrose.

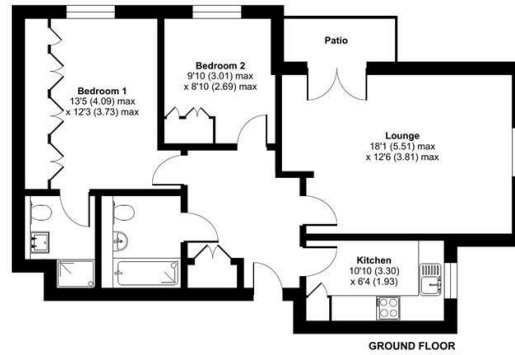
Lease 234 years remaining. Ground rent £300 pa. Service charge £3,300 pa.





Peacock Close, London, NW7

Approximate Area = 721 sq ft / 67 sq m
For identification only - Not to scale



Floor plan produced in accordance with RICS Property Measurement 2nd Edition, incorporating International Property Measurement Standards (IPMS2 Residential). © nrichcom 2025. Produced for Real Estates. REF: 1269500

Energy Efficiency Rating		Current	Potential
Very energy efficient - lower running costs	A	80	80
Energy efficient	B		
Decent	C		
Some energy efficiency improvements needed	D		
Energy efficiency improvements needed	E		
Significant energy efficiency improvements needed	F		
Major energy efficiency improvements needed	G		
Not energy efficient - higher running costs			

EU Directive

