



Southover, Woodside Park, N12 7HD

Guide Price £1,299,995 Freehold

Council Tax Band F

REAL ESTATES
Est. 1981

Estate Agents · Residential Sales · Investments · Lettings

Situated in a prime residential location in Woodside Park, at the top of a no-thru road, Real Estates are delighted to offer for sale this LINK DETACHED 3 BEDROOM family home offering vast potential to extend STPP.

Close proximity to Laurel Farm Pond and the walkways of the Darlands Nature Reserve. Catchment for Woodridge Primary School.

* 2 SEPARATE RECEPTION ROOMS * GUEST CLOAKROOM * KITCHEN/BREAKFAST ROOM * 3 BEDROOMS * BATHROOM/WALK IN SHOWER/WC * OFF STREET PARKING FOR SEVERAL CARS * APPROX 130 FT WEST FACING REAR GARDEN * POTENTIAL TO EXTEND STPP *

Sole Agent Real Estates

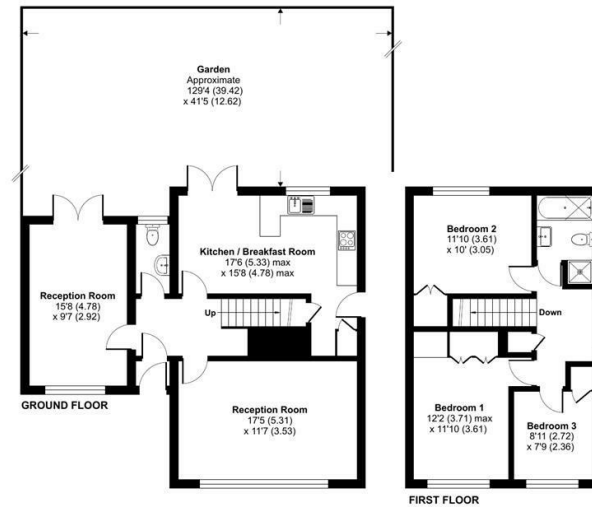






Southover, London, N12

Approximate Area = 1197 sq ft / 111.2 sq m
For identification only - Not to scale



Floor plan produced in accordance with RICS Property Measurement 2nd Edition, incorporating International Property Measurement Standards (IPMS2 Residential). © richcom 2025. Produced for Real Estates. REF: 1239026

Energy Efficiency Rating		Current	Potential
Very energy efficient - lower running costs	A		
B			84
C		63	
D			
E			
F			
G			
Not energy efficient - higher running costs			
EU Directive			



Real Estates Woodside Park Office:
14/14a Sussex Ring
Woodside Park N12 7HX

ll : 020 8445 6387
e : info@realestates-wsp.co.uk
w : www.realestates-wsp.co.uk