



Lullington Garth, Woodside Park, N12 7BT
Guide Price £250,000 Leasehold Council Tax Band C

REAL ESTATES
Est.1981

Estate Agents · Residential Sales · Investments · Lettings

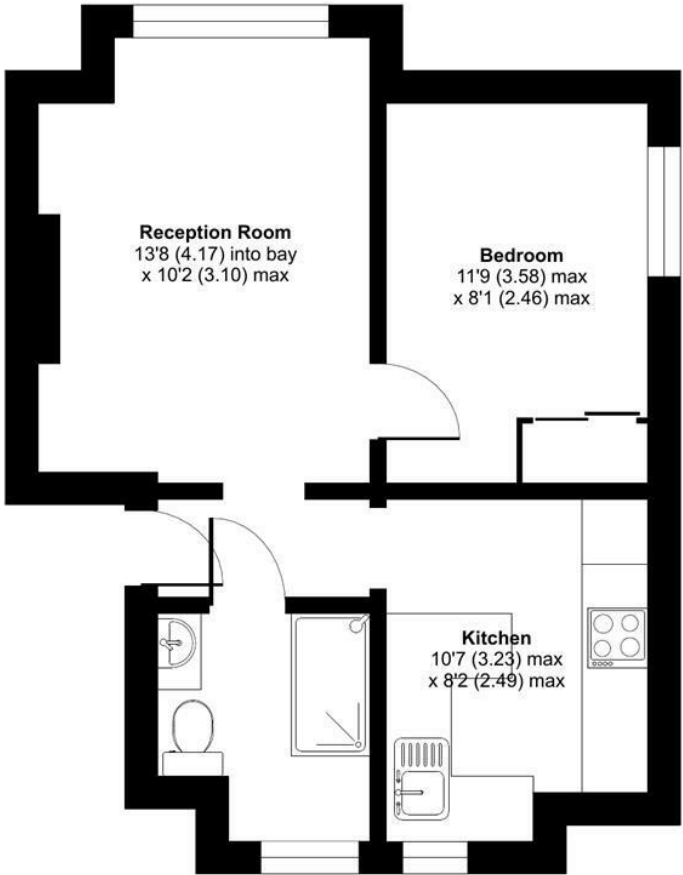
Real Estates are delighted to bring to the market for sale this CHAIN FREE 1 BEDROOM FIRST FLOOR APARTMENT.

The property is presented in modern condition and benefits from a good sized kitchen with integrated appliances, a newly decorated bathroom with waterfall shower, a nice sized reception with views over the communal gardens and a double bedroom with fitted wardrobes.

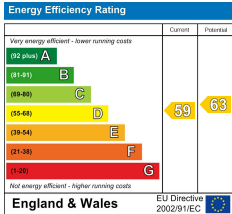
Barham Court is conveniently located on the boundary of Woodside Park and Mill Hill East, with easy access to local shops and transport facilities.

Lullington Garth, London, N12

Approximate Area = 387 sq ft / 35.9 sq m
For identification only - Not to scale



FIRST FLOOR



Floor plan produced in accordance with RICS Property Measurement 2nd Edition, Incorporating International Property Measurement Standards (IPMS2 Residential). © richcom 2025. Produced for Real Estates. REF: 1237826