



Henry Darlot Drive, Mill Hill, NW7 1RF
£630,000 Leasehold Council Tax Band E

REAL ESTATES
Est. 1981

Estate Agents · Residential Sales · Investments · Lettings

*** CHAIN FREE *** Real Estates are delighted to present this modern 2 BEDROOM, 2 BATHROOM apartment set in a highly sought-after building within the popular Millbrook Park development in Mill Hill East.

This large 3rd floor flat boasts a stylish open plan kitchen and living space, with double doors providing access onto a PRIVATE BALCONY offering far-reaching views of London.

The other side of the property features 2 double bedrooms, both with fitted wardrobes and 1 en-suite, plus a separate family bathroom and storage cupboard off the main hallway.

Garrison Heights is ideally located for Mill Hill East Underground Station on the Northern Line, as well as Panoramic Park directly opposite and a plethora of shops and cafes at the nearby Sussex Ring, Woodside Park and Holders Hill Circus.

ALLOCATED PARKING.

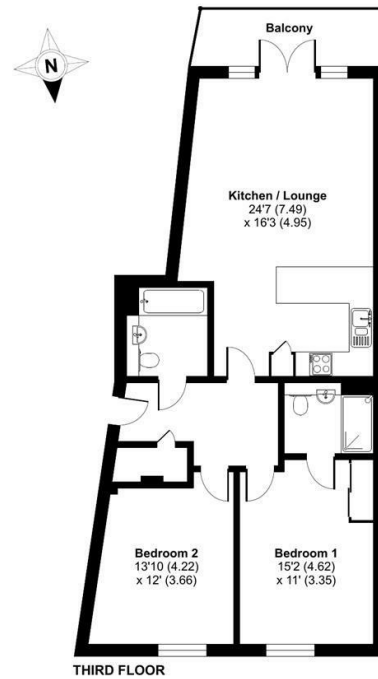
LEASE REMAINING: 992 YEARS. GROUND RENT: £350 PA





Garrison Heights, Henry Darlot Drive, London, NW7

Approximate Area = 892 sq ft / 82.9 sq m
For identification only - Not to scale



Floor plan produced in accordance with RICS Property Measurement 2nd Edition, incorporating International Property Measurement Standards (IPMS2 Residential). © richcom 2024. Produced for Real Estates. REF: 1204323

Energy Efficiency Rating		
	Current	Potential
Very energy efficient - lower running costs		
A (92-100)		
B (81-91)	86	86
C (69-80)		
D (55-68)		
E (39-54)		
F (21-38)		
G (1-20)		
Not energy efficient - higher running costs		
EU Directive		



Real Estates Woodside Park Office:
14/14a Sussex Ring
Woodside Park N12 7HX

ll : 020 8445 6387
e : info@realestates-wsp.co.uk
w : www.realestates-wsp.co.uk