



Medawar Drive, Mill Hill, NW7 1UA
£525,000 Leasehold Council Tax Band E

REAL ESTATES
Est.1981

Estate Agents · Residential Sales · Investments · Lettings

*** CHAIN FREE *** A well presented 2 BED 2 BATH second floor apartment set in the new Ridgeway Views development in the heart of Mill Hill Village, offering a stunning outlook across the rolling green fields of Totteridge Valley.

This property benefits from a bright and spacious open plan living, kitchen and dining space, leading onto a private covered balcony. There are two double bedrooms with fitted wardrobes, one en-suite shower room and another family bathroom.

The flat provides ample storage, including a separate cupboard for the washing machine and air filtration system. There is gated parking for one car, a video entry phone system, lift access and a gym for residents.

Callow House is ideally located for excellent schools, Mill Hill East tube station, Finchley Nurseries and nearby supermarkets. The surrounding area has a wealth of leisure options including golf clubs, horse riding, sports centres and country walks.

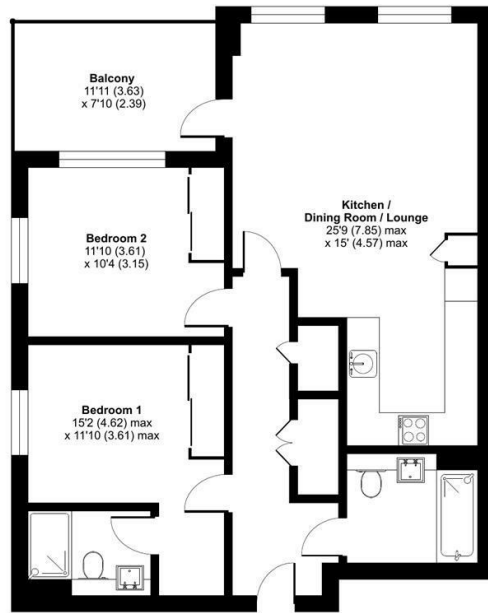
Lease 996 years remaining. Peppercorn ground rent. Service charge approximately £3200 per year.





Callow House, Medawar Drive, London, NW7

Approximate Area = 833 sq ft / 77.4 sq m
For identification only - Not to scale

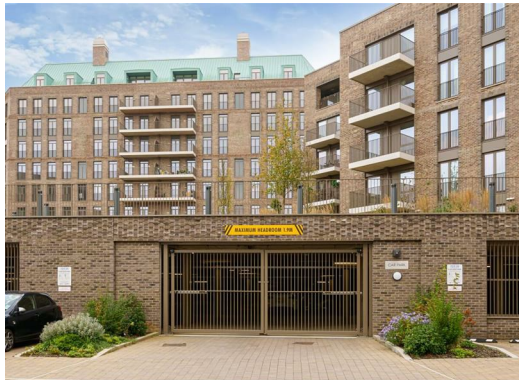


SECOND FLOOR

Certified Property Measurer
Floor plan produced in accordance with RICS Property Measurement Standards incorporating International Property Measurement Standards (IPMS Residential). © rinchecom 2024. Produced for Real Estates - REF: 1191307

Energy Efficiency Rating		Current	Potential
Very energy efficient - lower running costs	A	86	86
Energy efficient - lower running costs	B		
Decent energy efficiency - lower running costs	C		
Some energy efficiency - lower running costs	D		
Low energy efficiency - higher running costs	E		
Very low energy efficiency - higher running costs	F		
Least energy efficient - higher running costs	G		

EU Directive



Real Estates Woodside Park Office:
14/14a Sussex Ring
Woodside Park N12 7HX

ll : 020 8445 6387
e : info@realestates-wsp.co.uk
w : www.realestates-wsp.co.uk