



Holden Road, Woodside Park, N12 7DY  
£365,000 Leasehold      Council Tax Band C

**REAL ESTATES**  
Est.1981

Estate Agents · Residential Sales · Investments · Lettings



**\*CHAIN FREE\*** Real Estates bring to the market a well presented character ONE BEDROOM GROUND FLOOR MAISONETTE set in a PERIOD CONVERSION in the heart of Woodside Park.

This property benefits from its own front door, OFF STREET PARKING, and a large communal garden, as well as high ceilings and large sash windows.

The apartment is just a stone's throw to Woodside Park NORTHERN LINE Tube Station, plus local shops, cafes and parkland.

North Finchley High Road, with its plethora of general amenities, is within easy reach.

LEASE 114 yrs unexpired. GROUND RENT £10 pa SERVICE CHARGE £1,363.41 pa

Sole Agent



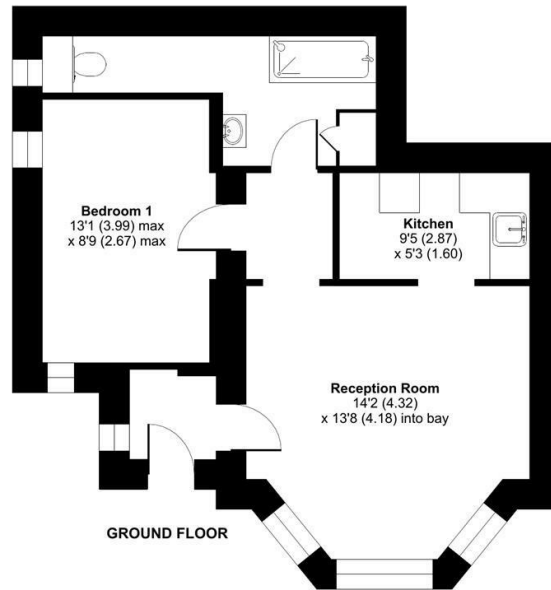






# Holden Road, London, N12

Total = 490 sq ft / 45.5 sq m  
For identification only - Not to scale



Certified Property Measurer  
Floor plan produced in accordance with RICS Property Measurement Standards incorporating International Property Measurement Standards (IPMS Residential). © rinchecom 2023. Produced for Real Estates - REF: 907497

Energy Efficiency Rating		Current	Potential
Very energy efficient - lower running costs	A		
Energy efficient	B		
Decent	C	68	78
Needs improvement	D		
Energy inefficient - higher running costs	E		
Very energy inefficient - higher running costs	F		
Very poor energy efficiency - highest running costs	G		

EU Directive



Real Estates Woodside Park Office:  
14/14a Sussex Ring  
Woodside Park N12 7HX

ll : 020 8445 6387  
e : info@realestates-wsp.co.uk  
w : www.realestates-wsp.co.uk