



Holden Road, Woodside Park, N12 7DN
£4,500 Per Calendar Month Council Tax Band G

REAL ESTATES
Est. 1981

Estate Agents · Residential Sales · Investments · Lettings

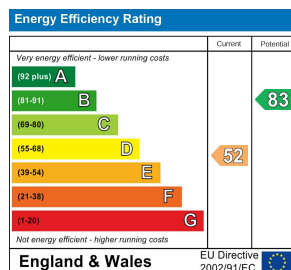
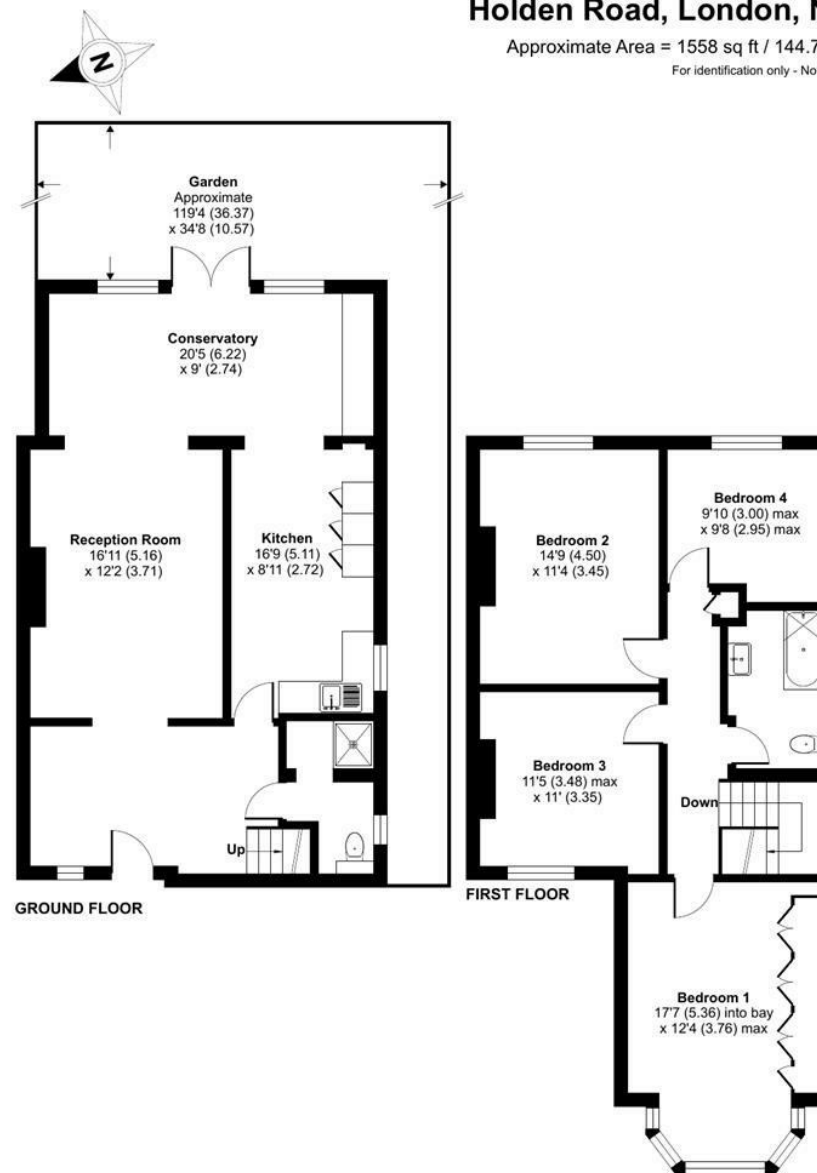
***AVAILABLE NOW* UNFURNISHED** * Real Estates are delighted to bring to the market this newly renovated 4 BEDROOM 2 BATHROOM SEMI-DETACHED FAMILY HOUSE situated in a sought after location a stones throw away from Woodside Park Underground Station.

The spacious accommodation comprises thru lounge/dining room, further rear reception room, fitted kitchen, and guest cloakroom/shower room to the ground floor. The 1st floor offers 4 bedrooms and 1 family bathroom.

Woodside Park Northern Line tube station together with multiple shops, boutiques, restaurants and cafes at are all within easy reach.

Holden Road, London, N12

Approximate Area = 1558 sq ft / 144.7 sq m
For identification only - Not to scale



Floor plan produced in accordance with RICS Property Measurement Standards incorporating International Property Measurement Standards (IPMS2 Residential). © nichecom 2024. Produced for Real Estates. REF: 1179432