



ORCHARD LODGE

Woodside Grove, Woodside Park, N12 8TJ  
£495,000 Share of Freehold Council Tax Band E

**REAL ESTATES**  
Est.1981

Estate Agents · Residential Sales · Investments · Lettings

**\*OFFERED CHAIN FREE\*** A well presented 2 BEDROOM 2 BATHROOM GROUND FLOOR apartment in this purpose built block, situated close to Woodside Park Northern Line tube station and within a few minutes' walk to North Finchley High Road's amenities.

The spacious accommodation comprises 2 good size bedrooms, 2 bathrooms (1 en suite), large reception room, fitted kitchen, private terrace, communal gardens and off street parking.

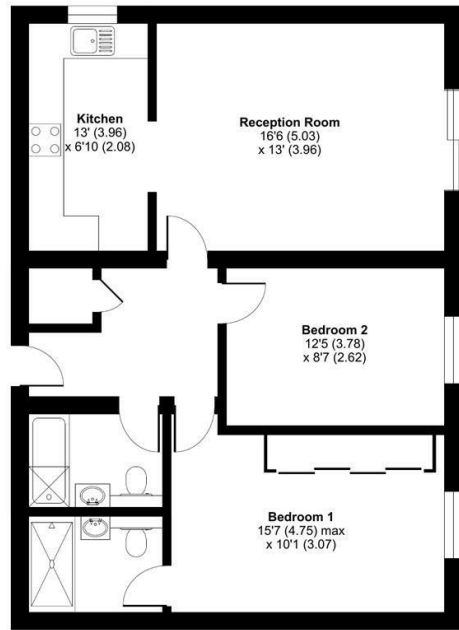
Share of Freehold





# Woodside Grove, London, N12

Approximate Area = 802 sq ft / 74.5 sq m  
For identification only - Not to scale



GROUND FLOOR

Certified Property Measurer  
Floor plan produced in accordance with RICS Property Measurement Standards incorporating International Property Measurement Standards (IPMS Residential). © richcom 2023. Produced for Real Estates. REF: 908407

Energy Efficiency Rating		Current	Potential
Very energy efficient - lower running costs	A		
Energy efficient - lower running costs	B		
Decent energy efficiency - lower running costs	C	71	77
Some energy efficiency - lower running costs	D		
Low energy efficiency - higher running costs	E		
Very low energy efficiency - higher running costs	F		
Least energy efficient - higher running costs	G		

EU Directive

