



74 Holden Road, Woodside Park, N12 7DY  
£2,000 Per Calendar Month Council Tax Band D

**REAL ESTATES**  
Est.1981

Estate Agents · Residential Sales · Investments · Lettings

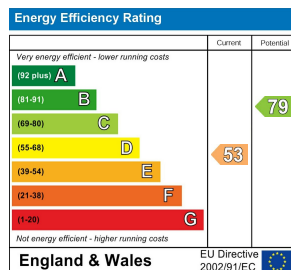
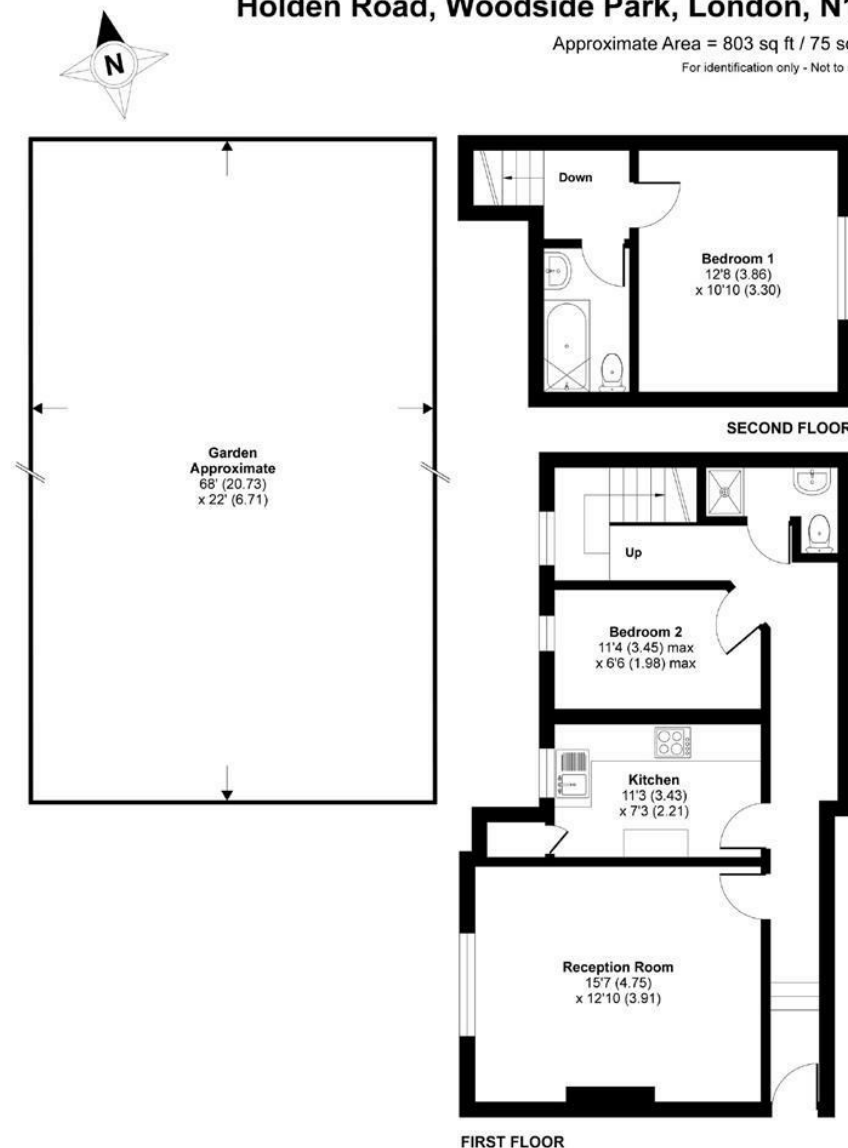
**\*AVAILABLE 22ND JUNE\* UNFURNISHED\* A 2 BEDROOM 2 BATHROOM DUPLEX (1st and 2nd floor) CONVERSION APARTMENT with the benefit of its own PARKING SPACE and SECTION OF REAR GARDEN.**

The 1st floor accommodation provides a lounge, fitted kitchen, bedroom and shower room. A further bedroom and bathroom is on the 2nd floor.

Conveniently situated close to Woodside Park Northern Line tube station, local cafes, shops, bus services and parkland.

## Holden Road, Woodside Park, London, N12

Approximate Area = 803 sq ft / 75 sq m  
For identification only - Not to scale



Floor plan produced in accordance with RICS Property Measurement Standards incorporating International Property Measurement Standards (IPMS2 Residential). © nrichcom 2021. Produced for Real Estates. REF: 798591