

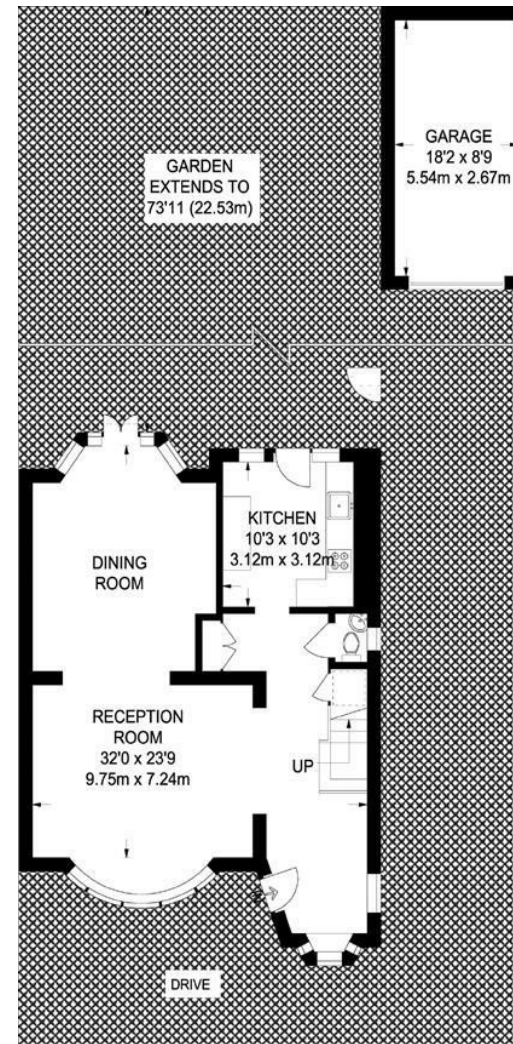
Michleham Down, Woodside Park, N12 7JJ
£3,200 Per Calendar Month Council Tax Band G

REAL ESTATES
Est.1981

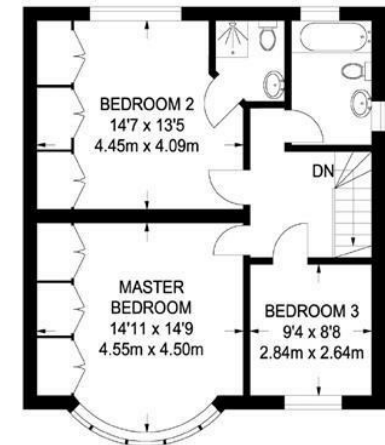
Estate Agents · Residential Sales · Investments · Lettings

*** AVAILABLE 3RD JULY * UNFURNISHED * A well presented 3 BEDROOM SEMI-DETACHED family home situated in the heart of Woodside Park, within easy reach of local shopping and transport facilities.**

The accommodation comprises through reception room, newly fitted kitchen (current image is of old kitchen) with American style fridge freezer, set on a quiet street boasting a bright double reception room, modern kitchen, master bedroom with en suite, 2 further bedrooms and family bathroom.



GROUND FLOOR
736 SQ FT / 68.4 SQ M



FIRST FLOOR
659 SQ FT / 61.2 SQ M

APPROXIMATE GROSS INTERNAL AREA
1395 SQ FT / 129.6 SQ M
GARAGE = 165 SQ FT / 15.3 SQ M
TOTAL = 1560 SQ FT / 144.9 SQ M

