



Holden Road, Woodside Park, N12 7FB
£525,000 Leasehold Council Tax Band E

REAL ESTATES
Est. 1981

Estate Agents · Residential Sales · Investments · Lettings

OFFERED CHAIN FREE A well presented and modern 2 bedroom 2 bathroom 2nd floor apartment in this purpose built block, with the benefit of 3 private balconies, gated allocated parking space and lift.

The accommodation includes an open plan reception with fitted kitchen (including new oven and dishwasher), 2 good sized bedrooms, 2 bathrooms (1 en suite) and storage cupboards off hallway with washing machine.

Conveniently situated just a short walk to Woodside Park's Northern Line tube station, local shops, cafés and parkland.

Lease 113 yrs remaining. Ground Rent £300 pa Service Charge £3,331 pa

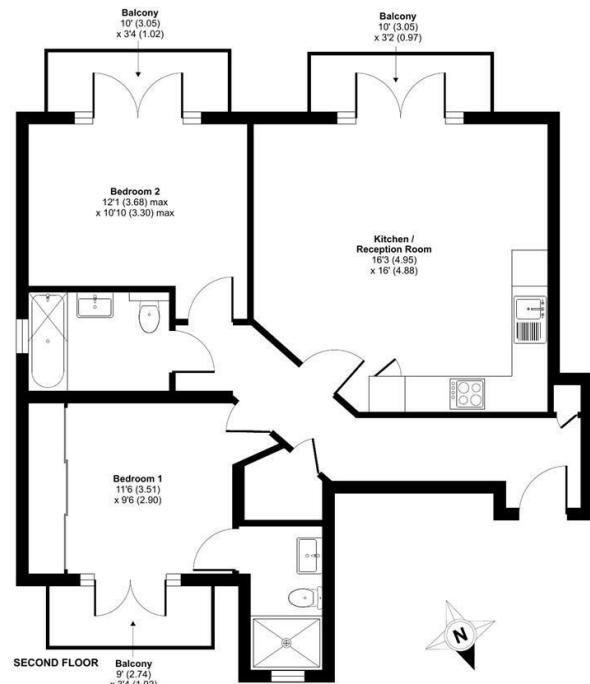




Holden Road, London, N12

Approximate Area = 700 sq ft / 65 sq m

For identification only - Not to scale



Certified Property Measurer
 Floor plan produced in accordance with RICS Property Measurement Standards incorporating International Property Measurement Standards (IPMS2 Residential). © rinchcom 2024.
 Produced for Real Estates - REF: 1121138

Energy Efficiency Rating		Current	Potential
Very energy efficient - lower running costs			
A	92-100		
B	81-91	82	82
C	69-80		
D	55-68		
E	39-54		
F	21-38		
G	1-20		
Not energy efficient - higher running costs			
EU Directive			



Real Estates Woodside Park Office:
 14/14a Sussex Ring
 Woodside Park N12 7HX

ll : 020 8445 6387
 e : info@realestates-wsp.co.uk
 w : www.realestates-wsp.co.uk