

Franklin Close, Whetstone, N20 9QG  
£2,500 Per Calendar Month      Council Tax Band F

**REAL ESTATES**  
Est.1981

Estate Agents · Residential Sales · Investments · Lettings

**\*AVAILABLE 18 JUNE\* UNFURNISHED \* A well presented 4 BEDROOM TOWNHOUSE arranged over 3 floors with the benefit of a GARAGE and OFF STREET PARKING.**

Ideally situated just off Whetstone High Road, within walking distance to Totteridge & Whetstone Northern Line tube station and Oakleigh Park Overground station.

**\* 2 RECEPTION ROOMS \* 4 BEDROOMS \* 2 BATHROOMS \* GUEST CLOAKROOM \* GARDEN \* GARAGE \* OFF STREET PARKING \***

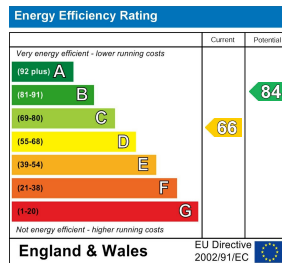
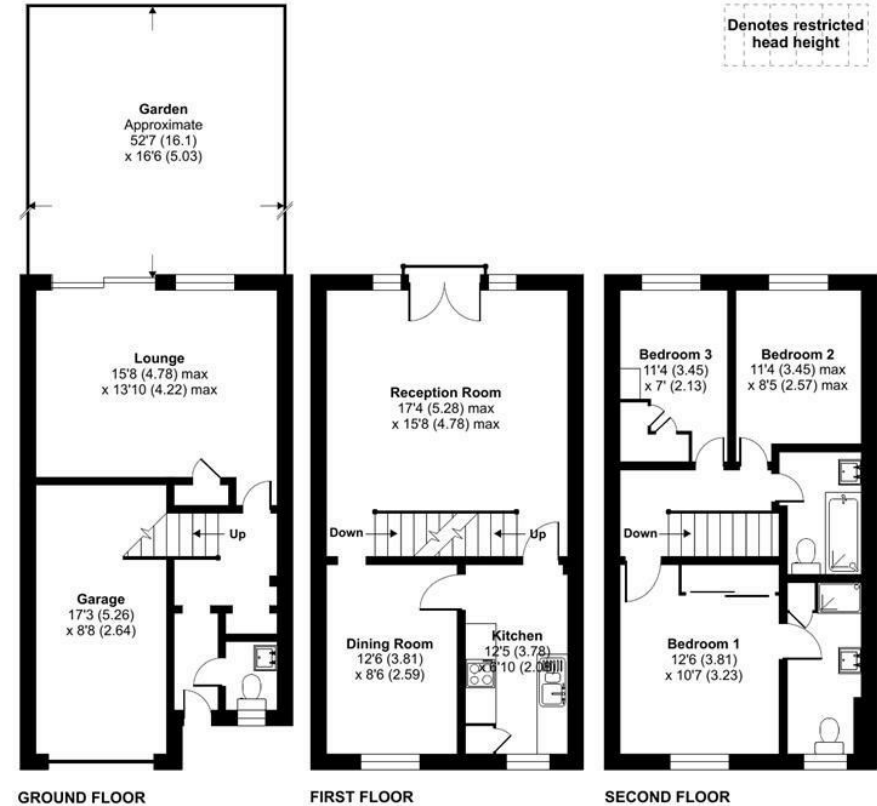
## Franklin Close, Whetstone, N20

Approximate Area = 1235 sq ft / 114.7 sq m

Garage = 148 sq ft / 13.8 sq m

Total = 1383 sq ft / 128.5 sq m

For identification only - Not to scale



Floor plan produced in accordance with RICS Property Measurement Standards incorporating International Property Measurement Standards (IPMS2 Residential). © nichecom 2023. Produced for Real Estates. REF: 981290