



Highwood Avenue, North Finchley, N12 8QP
Asking Price £850,000 Freehold Council Tax Band F

REAL ESTATES
Est.1981

Estate Agents · Residential Sales · Investments · Lettings

Real Estates are delighted to offer for sale this MID TERRACE 4/5 BEDROOM 2 BATHROOM family home with character features throughout, situated in a quiet residential street in North Finchley.

Arranged over 3 levels, the accommodation includes lounge with front aspect bay windows, dining room, fitted kitchen and conservatory to the ground floor. The first floor comprises 3 bedrooms and a family bathroom. A good size bedroom, shower room and 5th bedroom/study complete the 2nd floor.

To the rear, the garden is mainly laid to lawn and features a summer outhouse with light and power, ideal for a home office.

Woodside Park Northern Line tube station is within easy reach as well as the shops, cafes and restaurants of North Finchley High Road.

Sole Agent

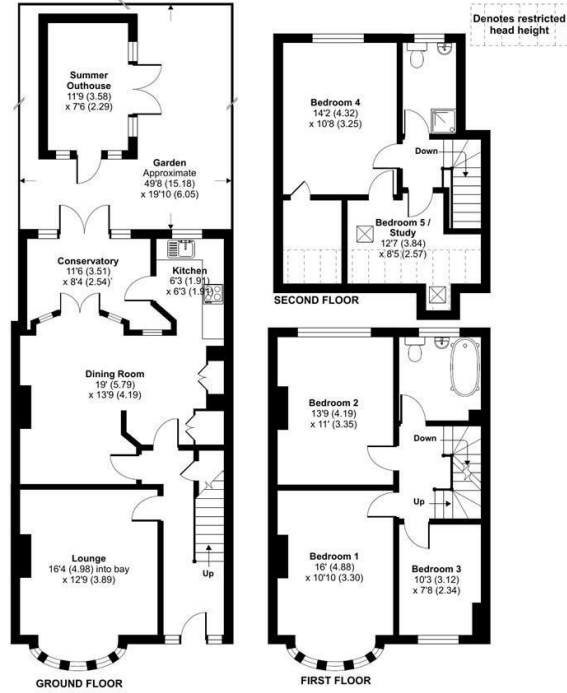






Highwood Avenue, London, N12

Approximate Area = 1590 sq ft / 147.7 sq m
Limited Use Area(s) = 64 sq ft / 5.9 sq m
Outbuilding = 98 sq ft / 8.2 sq m
Total = 1742 sq ft / 161.8 sq m
For identification only - Not to scale



Certified Property Measurer
Floor plan produced in accordance with RICS Property Measurement Standards incorporating International Property Measurement Standards (IPMS Residential). © rinchcom 2023. Produced for Real Estates - REF: 943320

Energy Efficiency Rating		Current	Potential
Very energy efficient - lower running costs	A		79
Energy efficient	B		
Decent	C		
Needs some work	D		53
Needs more work	E		
Needs a lot of work	F		
Very poor energy efficiency - higher running costs	G		

EU Directive



Real Estates Woodside Park Office:
14/14a Sussex Ring
Woodside Park N12 7HX

ll : 020 8445 6387
e : info@realestates-wsp.co.uk
w : www.realestates-wsp.co.uk