



Southover, Woodside Park, N12 7HD  
Offers In Excess Of £950,000 Freehold Council Tax Band G

**REAL ESTATES**  
Est.1981

Estate Agents · Residential Sales · Investments · Lettings

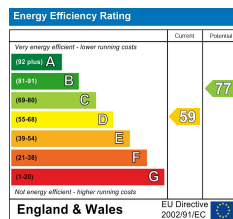
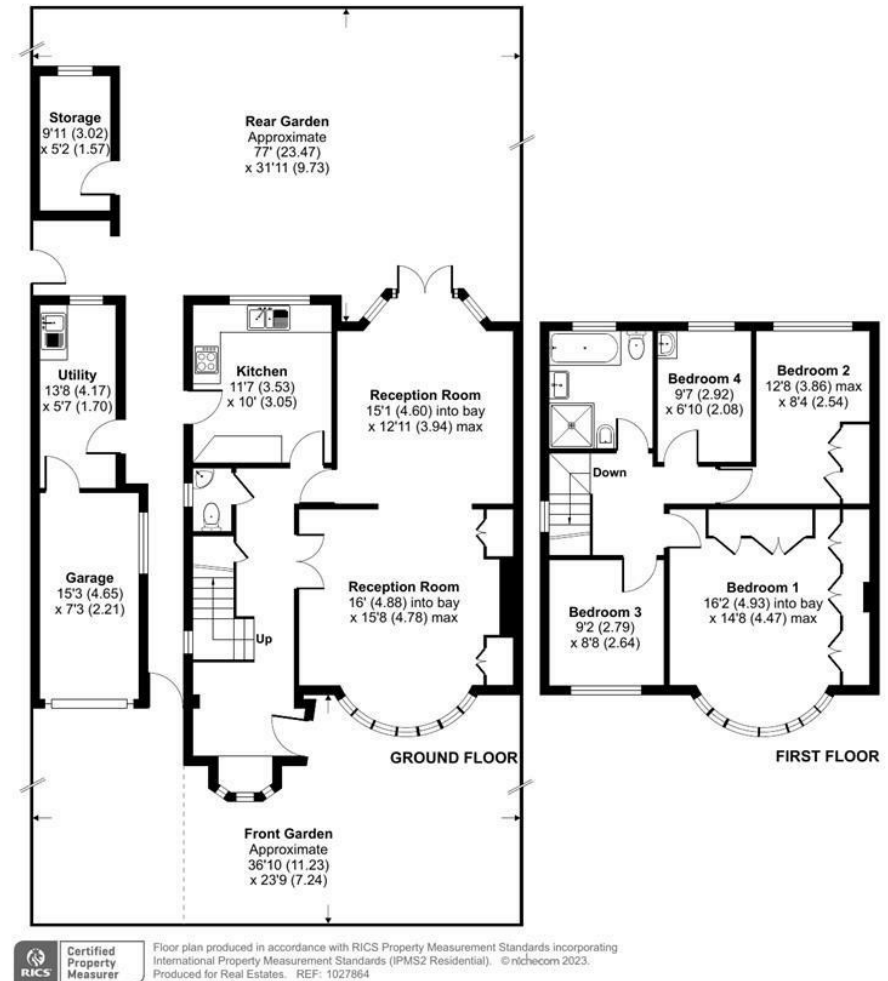


**\*SOLD\*** A 4 BEDROOM SEMI-DETACHED PROPERTY in sought after location in the heart of Woodside Park.

## Southover, London, N12

Approximate Area = 1343 sq ft / 124.8 sq m  
 Garage = 186 sq ft / 17.3 sq m  
 Outbuilding = 51 sq ft / 4.7 sq m  
 Total = 1580 sq ft / 146.8 sq m

For identification only - Not to scale



Real Estates Woodside Park Office:  
 14/14a Sussex Ring  
 Woodside Park N12 7HX

ll : 020 8445 6387  
 e : info@realestates-wsp.co.uk  
 w : www.realestates-wsp.co.uk