



Wentworth Park, West Finchley, N3 1YE
Offers Over £825,000 Freehold Council Tax Band F

REAL ESTATES
Est. 1981

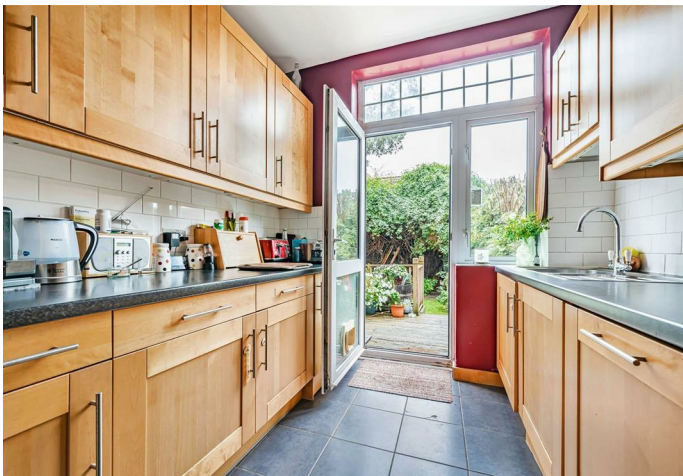
Estate Agents · Residential Sales · Investments · Lettings

Real Estates are delighted to bring to the market this THREE BEDROOM END OF TERRACE family home set on a quiet residential street that is conveniently located nearby Finchley's bustling Ballards Lane.

This property is full of character and has been maintained to a high standard throughout. The ground floor accommodation benefits from two reception rooms, a galley style kitchen that leads onto a beautiful south-west facing rear garden, and a guest cloakroom.

To the first floor you will find the principal bedroom, which benefits from built in wardrobes, a lovely double second bedroom and a good sized single third bedroom. The first floor is completed with a family bathroom that benefits from a bath and separate shower.

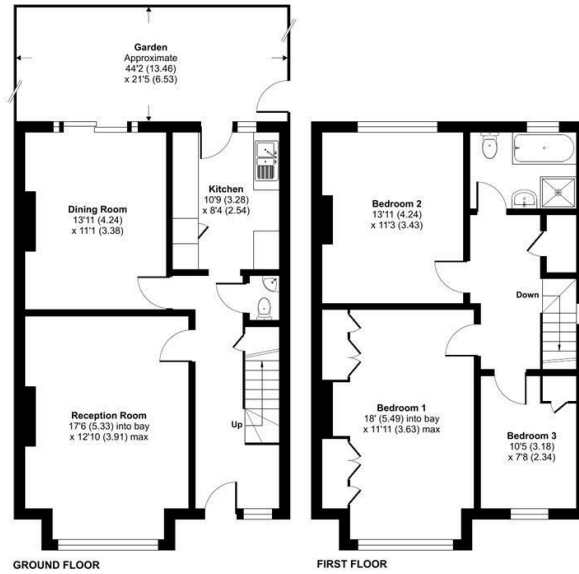
This must see home is situated within easy reach of both West Finchley & Finchley Central Northern Line tube stations, local shops and cafes, Victoria Park and Moss Hall Primary School.





Wentworth Park, London, N3

Approximate Area = 1218 sq ft / 113.1 sq m
For identification only - Not to scale



Certified Property Measurer
Floor plan produced in accordance with RICS Property Measurement Standards incorporating International Property Measurement Standards (IPMS Residential). © rinchecom 2023. Produced for Real Estates - REF: 1046995

Energy Efficiency Rating		Current	Potential
Very energy efficient - lower running costs	A		
Energy efficient - lower running costs	B		81
Decent energy efficiency - lower running costs	C		
Some energy efficiency - lower running costs	D	55	
Not very energy efficient - higher running costs	E		
Energy inefficient - higher running costs	F		
Very energy inefficient - higher running costs	G		

EU Directive



Real Estates Woodside Park Office:
14/14a Sussex Ring
Woodside Park N12 7HX

ll : 020 8445 6387
e : info@realestates-wsp.co.uk
w : www.realestates-wsp.co.uk