



CHRISTOPHER HODGSON

Whitstable

The Cottage, Sea Wall, Whitstable, Kent, CT5 1BX

Freehold

A charming double-fronted period cottage in an enviable beachfront position on Whitstable's coveted Sea Wall, from where it commands panoramic views across Whitstable Bay and towards the Isle of Sheppey. The house enjoys a much sought-after central position with direct beach access and is moments away from Harbour Street with it's boutique shops and individual restaurants, the bustling High Street, Whitstable harbour, and mainline railway station (0.6 miles).

The beautifully presented accommodation retains much period detail and enjoys breathtaking sea views across the bay and towards the Isle of Sheppey beyond. The ground floor is arranged to provide a sitting room, a large open plan kitchen/dining room, and a bathroom. To the first floor there are two bedrooms and a shower room.

There is also a useful attic room.

The house also benefits from a sea facing courtyard garden, providing the perfect vantage point to enjoy Whitstable's famous sunsets which come to a stunning conclusion over the Isle of Sheppey. No onward chain.

LOCATION

Sea Wall lies in the heart of central Whitstable, a short stroll from the vibrant High Street and charming Harbour Street, which boast an array of boutique shops, restaurants and delicatessens. Just moments from the town centre you can meander through the town's historic alleyways leading to Whitstable's beautiful coastline and working harbour with fish market. Located between Whitstable and Tankerton is Whitstable Castle which is a popular attraction offering a wide range of social and cultural events along with its now celebrated 'Regency' style gardens. A short stroll up Tower Hill will take you to Tankerton slopes and the Castle Tea Gardens where you can enjoy stunning sea views over Whitstable Bay and the Isle of Sheppey. Mainline railway services are available at Whitstable

station (0.6 miles), offering fast and frequent services to London (Victoria approximately 80mins) with high speed links to London St Pancras (approximately 73mins) and the A299 is also easily accessible linking with the A2/ M2 providing access to the channel ports and subsequent motorway network.

ACCOMMODATION

The accommodation and approximate measurements (taken at maximum points) are:

GROUND FLOOR

- Sitting Room 13'11" x 13'9" (4.25m x 4.20m)
- Kitchen 16'9" x 9'1" (5.10m x 2.76m)
- Dining Room 10'6" x 9'10" (3.20m x 3.00m)

- Bathroom

FIRST FLOOR

- Bedroom 1 16'9" x 9'1" (5.10m x 2.77m)
- Bedroom 2 13'9" x 11'5" (4.19m x 3.48m)
- Attic Room 10'4" x 7'5" (3.15m x 2.26m)
- Shower Room

OUTSIDE

- Courtyard Garden









Viewing: STRICTLY BY APPOINTMENT WITH CHRISTOPHER HODGSON ESTATE AGENTS
95-97 TANKERTON ROAD, WHITSTABLE CT5 2AJ | 01227 266 441 | INFO@CHRISTOPHERHODGSON.CO.UK | CHRISTOPHERHODGSON.CO.UK

ENERGY PERFORMANCE CERTIFICATE

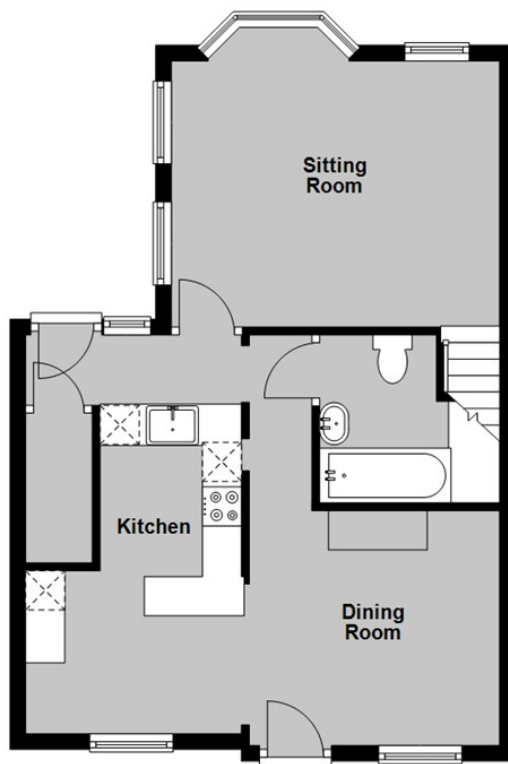
Energy Efficiency Rating		
	Current	Potential
Very energy efficient - lower running costs		
(92 plus) A		82
(81-91) B		
(69-80) C		
(55-68) D	54	
(39-54) E		
(21-38) F		
(1-20) G		
Not energy efficient - higher running costs		
EU Directive 2002/91/EC		
England & Wales		

Christopher Hodgson Estate Agents for itself and as for the vendor or lessor (as appropriate) gives notice that: 1 These particulars are only a general outline for the guidance of intending purchasers or lessees and do not constitute in whole or in part an offer or a Contract. 2 Reasonable endeavours have been made to ensure that the information given in these particulars is materially correct but any intending purchaser or lessee should satisfy themselves by inspection, searches, enquiries and survey as to the correctness of each statement. 3 All statements in these particulars are made without responsibility on the part of Christopher Hodgson Estate Agents or the vendor or lessor. 4 No statement in these particulars is to be relied upon as a statement or representation of fact. 5 Neither Christopher Hodgson Estate Agents nor anyone in its employment or acting on its behalf has authority to make any representation or warranty in relation to this property. 6 Nothing in these particulars shall be deemed to be a statement that the property is in good repair or condition or otherwise nor that any services or facilities are in good working order. 7 Photographs may show only certain parts and aspects of the property at the time when the photographs were taken and you should rely upon actual inspection. 8 No assumption should be made in respect of parts of the property not shown in photographs. 9 Any areas, measurements or distances are only approximate. 10 Any reference to alterations or use is not intended to be a statement that any necessary planning, building regulation, listed building or any other consent has been obtained. 11 Amounts quoted are exclusive of VAT if applicable. 12 Whilst reasonable endeavours have been made to ensure the accuracy of any floor plan contained in these particulars, all measurements and areas are approximate and no responsibility is taken for any error, omission or mis-statement. This plan is for illustrative purposes only and should be used as such by any prospective purchaser. 13 Any mapping contained within these particulars is for illustrative purposes only and should be used as such by any prospective purchaser. No responsibility is taken for any error, omission or mis-statement 14 Any computer generated images contained within these particulars are for illustrative purposes only and should be used as such by any prospective purchaser.



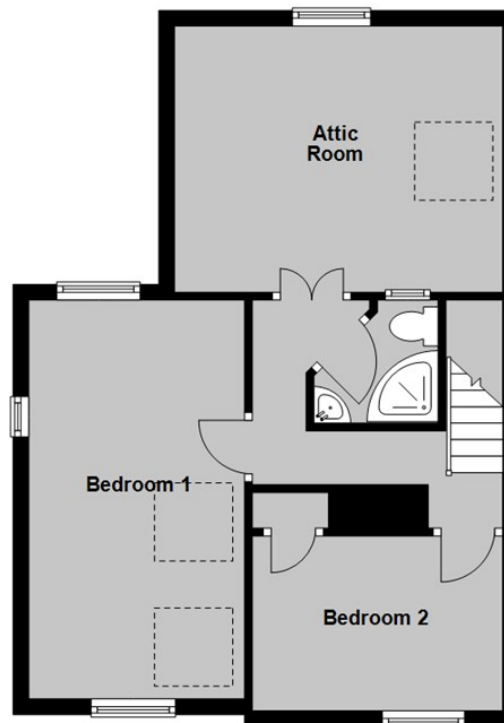
Ground Floor

Approx. 46.3 sq. metres (498.4 sq. feet)



First Floor

Approx. 46.4 sq. metres (499.1 sq. feet)



Total area: approx. 92.7 sq. metres (997.5 sq. feet)



95-97 TANKERTON ROAD, WHITSTABLE CT5 2AJ | 01227 266 441 | INFO@CHRISTOPHERHODGSON.CO.UK | CHRISTOPHERHODGSON.CO.UK

Estate agency services are provided by Christopher Hodgson Limited, a company incorporated and registered in England and Wales with the number 07108955 whose registered address is at Camburgh House, 27 New Dover Road, Canterbury, Kent CT1 3DN. Director: W G Roalfe