



Canterbury

6 Castle Street, Canterbury, Kent, CT1 2QF

Freehold

A unique and exciting opportunity to acquire a Grade II Listed freehold building in a prime central position within the Old City walls, where it enjoys a prominent trading position with high footfall.

Being sold with vacant possession, this substantial three-storey commercial premises with traditional shop front comprises a large open-plan retail/office area with kitchenette to the ground floor, and the first and second floors are occupied by three separate offices, a large storage room and a cloakroom.

Outside, there is a small courtyard which incorporates a brick-built store with WC.

The building is thought suitable for a variety of businesses under use Class E. Interested parties are advised to make their own enquiries relating to planning matters via Canterbury City Council; www.canterbury.gov.uk/planning.

LOCATION

Castle Street is ideally situated within the city walls, in the heart of Canterbury's historic city centre. The location is convenient for access to Canterbury West mainline railway station (0.6 miles) as well as Canterbury bus station (0.3 miles distant). Canterbury also offers a wealth of cultural and leisure amenities including the recently reconstructed Marlowe Theatre, bars, highly regarded restaurants and a major shopping centre enjoying a range of mainstream retail outlets as well as many individual shops. Canterbury provides easy access to the A2/M2 and subsequent motorway network and the mainline railway stations offer fast and frequent services to London Victoria (approximately 95mins), and high speed links from Canterbury West to London St Pancras (approximately 56 mins).

ACCOMMODATION

The accommodation and approximate measurements (taken at maximum points):

GROUND FLOOR

- Retail/Shop/Office 29'1" x 13'5" (8.86m x 4.09m)
- Kitchen 7'3" x 5'10" (2.21m x 1.78m)
- Store 8'2" x 7'3" (2.49m x 2.21m)
- Cloakroom 3'2" x 2'11" (0.97m x 0.89m)

FIRST FLOOR

- Office 15'11" x 11'10" (4.85m x 3.61m)
- Office 13'1" x 12'11" (3.99m x 3.94m)
- Office 8'1" x 5'4" (2.46m x 1.63m)

SECOND FLOOR

- Storage 16'11" x 15'9" (5.16m x 4.80m)
- Cloakroom 11'1" x 8' (3.38m x 2.44m)

OUTSIDE

- Store
- Cloakroom

BUSINESS RATES

According to the Valuation Office Agency website the property's current description is 'Shop and Premises' and the Rateable Value is currently £14,500. For more information please visit GOV.UK





GUARDIAN
01227
762128

JACKSON-STOPS

JACKSON-STOPS

KEEP CLEAR





Viewing: STRICTLY BY APPOINTMENT WITH CHRISTOPHER HODGSON ESTATE AGENTS

95-97 TANKERTON ROAD, WHITSTABLE CT5 2AJ | 01227 266 441 | INFO@CHRISTOPHERHODGSON.CO.UK | CHRISTOPHERHODGSON.CO.UK

ENERGY PERFORMANCE CERTIFICATE

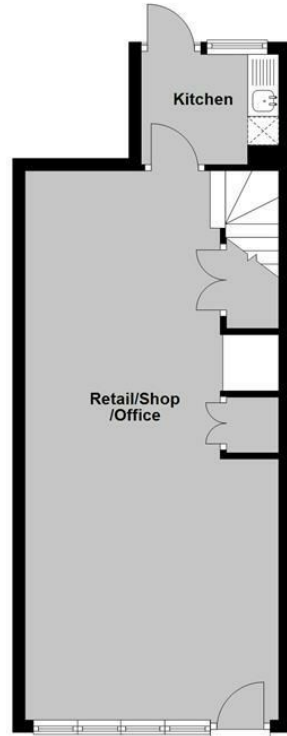
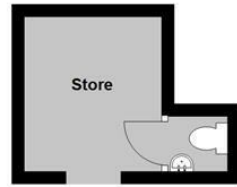
Rating 114 (E)

Christopher Hodgson Estate Agents for itself and as for the vendor or lessor (as appropriate) gives notice that: 1 These particulars are only a general outline for the guidance of intending purchasers or lessees and do not constitute in whole or in part an offer or a Contract. 2 Reasonable endeavours have been made to ensure that the information given in these particulars is materially correct but any intending purchaser or lessee should satisfy themselves by inspection, searches, enquiries and survey as to the correctness of each statement. 3 All statements in these particulars are made without responsibility on the part of Christopher Hodgson Estate Agents or the vendor or lessor. 4 No statement in these particulars is to be relied upon as a statement or representation of fact. 5 Neither Christopher Hodgson Estate Agents nor anyone in its employment or acting on its behalf has authority to make any representation or warranty in relation to this property. 6 Nothing in these particulars shall be deemed to be a statement that the property is in good repair or condition or otherwise nor that any services or facilities are in good working order. 7 Photographs may show only certain parts and aspects of the property at the time when the photographs were taken and you should rely upon actual inspection. 8 No assumption should be made in respect of parts of the property not shown in photographs. 9 Any areas, measurements or distances are only approximate. 10 Any reference to alterations or use is not intended to be a statement that any necessary planning, building regulation, listed building or any other consent has been obtained. 11 Amounts quoted are exclusive of VAT if applicable. 12 Whilst reasonable endeavours have been made to ensure the accuracy of any floor plan contained in these particulars, all measurements and areas are approximate and no responsibility is taken for any error, omission or mis-statement. This plan is for illustrative purposes only and should be used as such by any prospective purchaser. 13 Any mapping contained within these particulars is for illustrative purposes only and should be used as such by any prospective purchaser. No responsibility is taken for any error, omission or mis-statement. 14 Any computer generated images contained within these particulars are for illustrative purposes only and should be used as such by any prospective purchaser.



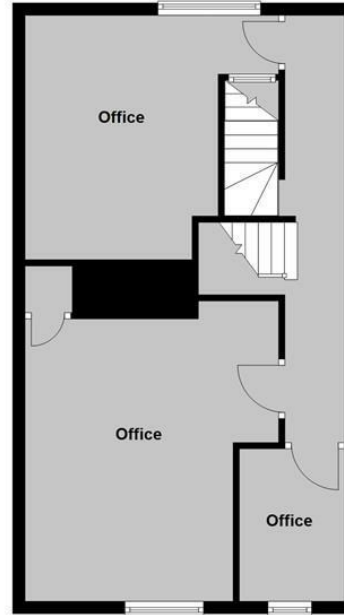
Ground Floor

Main area: approx. 40.5 sq. metres (436.2 sq. feet)
Plus outbuildings, approx. 6.5 sq. metres (70.0 sq. feet)



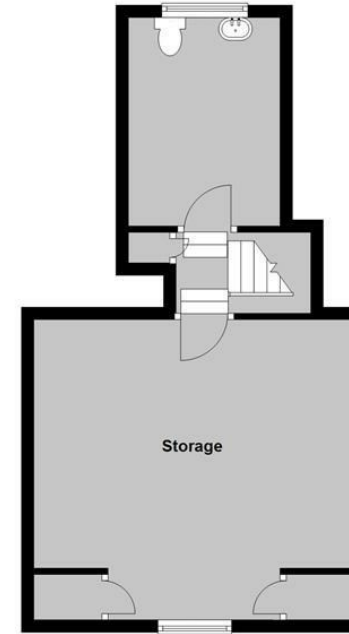
First Floor

Approx. 47.7 sq. metres (513.1 sq. feet)



Second Floor

Approx. 37.0 sq. metres (398.2 sq. feet)



Main area: Approx. 125.2 sq. metres (1347.6 sq. feet)
Plus outbuildings, approx. 6.5 sq. metres (70.0 sq. feet)





95-97 TANKERTON ROAD, WHITSTABLE CT5 2AJ | 01227 266 441 | INFO@CHRISTOPHERHODGSON.CO.UK | CHRISTOPHERHODGSON.CO.UK

Estate agency services are provided by Christopher Hodgson Limited, a company incorporated and registered in England and Wales with the number 07108955 whose registered address is at Camburgh House, 27 New Dover Road, Canterbury, Kent CT1 3DN. Director: W G Roalfe