

# 60 MARINE PARADE

WHITSTABLE • KENT



CHRISTOPHER HODGSON

FOR COASTAL, COUNTRY & CITY LIVING

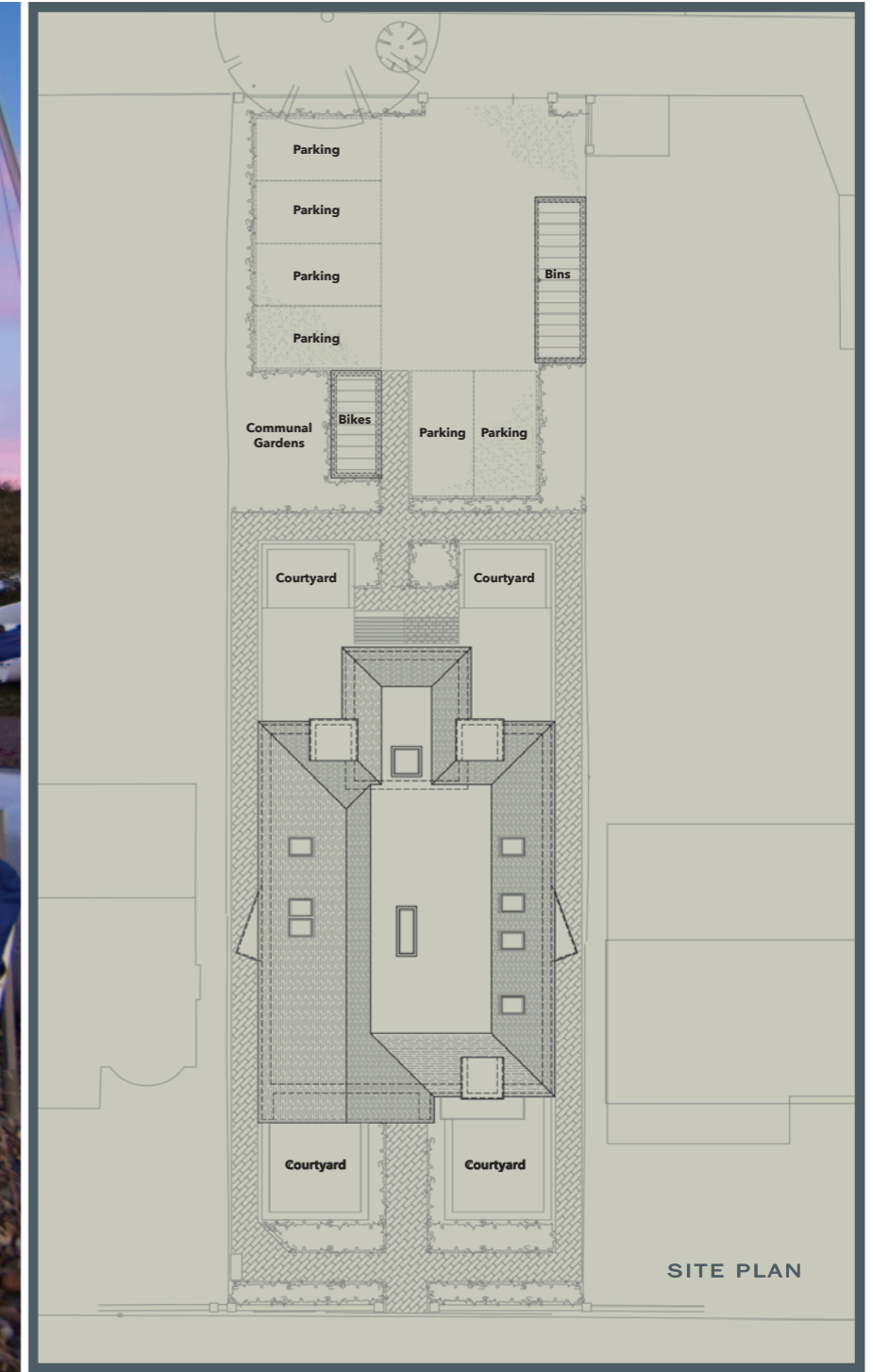


# 60 MARINE PARADE

WHITSTABLE • KENT

ICONIQ HOMES  
SMART PROPERTY DEVELOPMENT

WHITSTABLE YACHT CLUB



A prestigious new development of five luxury apartments in one of the area's most exclusive sea facing locations, from where it commands panoramic views across Whitstable bay and towards the Isle of Sheppey.





#### THE APARTMENTS

This striking contemporary building features aluminium cladding, smart brickwork and contrasting white render beneath a slate tiled roof. The development comprises four two bedroom apartments and an exceptional three bedroom penthouse which occupies the whole of the top floor. Each apartment provides bright, open-plan living accommodation finished to a high specification throughout, to include stylish kitchens and bathrooms, with some benefitting from sea facing balconies and courtyard gardens and all enjoying outstanding views of the sea.

The building is serviced by a lift, a cycle store and allocated parking to the rear of the building, accessed via Tankerton Road.

The superb penthouse apartment totals 1356 sq ft (126 sq m) and is arranged to provide an entrance hall, a spacious living room opening to a large sea facing balcony, three bedrooms and two bathrooms. The principal bedroom benefits from an en-suite shower room, walk-in wardrobe, and Juliette balcony.

#### LOCATION

Marine Parade is amongst the area's most sought after locations and is conveniently situated in an elevated position at the top of Tankerton Slopes, commanding views over the bay and beyond.

Tankerton Road is moments away and offers an excellent range of local shops and restaurants, and Whitstable town is less than 1 mile distant with the bustling High Street providing a wide range of shopping facilities as well as fashionable restaurants and recreational amenities.

Whitstable mainline railway stations offer frequent services to London (Victoria) approximately 80mins.

The high speed Javelin service provides access to London (St Pancras) with a journey time of approximately 73mins. The A299 is accessible providing a dual carriageway link to the M2/A2 giving access to the channel ports and connecting motorway network.



# 60 MARINE PARADE

WHITSTABLE • KENT

ICONIQ HOMES  
SMART PROPERTY DEVELOPMENT

PORCELANOSA  
TILES • BATHROOMS • KITCHENS

SIEMENS



## SPECIFICATION

### Kitchens

- Designer fitted kitchens with quartz Silestone worksurfaces
- Integrated Siemens appliances consisting of:
  - Fridge/freezer
  - Induction hob with integrated extractor hood above (downdraft extractor to apartments 1 & 2)
  - Electric Oven
  - Dishwasher
- Blanco stainless steel sink with Blanco tap
- LED under-lighting to wall cabinets
- Recessed LED downlighters or pendants to all rooms
- Quooker boiling water tap (Penthouse only)

### Bathrooms

- High quality sanitary ware
- Wall hung WC with concealed cistern
- Walk-in shower cubicle with rainfall shower and separate bath (apartments 3 & 4)
- Ensuite shower room (apartments 1, 2 & Penthouse)
- Bath with overhead shower (apartments 1, 2 & Penthouse)
- Electric heated towel rails in chrome
- Shaver sockets in Black Nickel
- Tiles by Porcelanosa
- Brushed chrome tile trims
- Feature LED lighting and alcoves

### Utility Room/Cloakroom

- Recess and plumbing for washing machine/dryer

### General

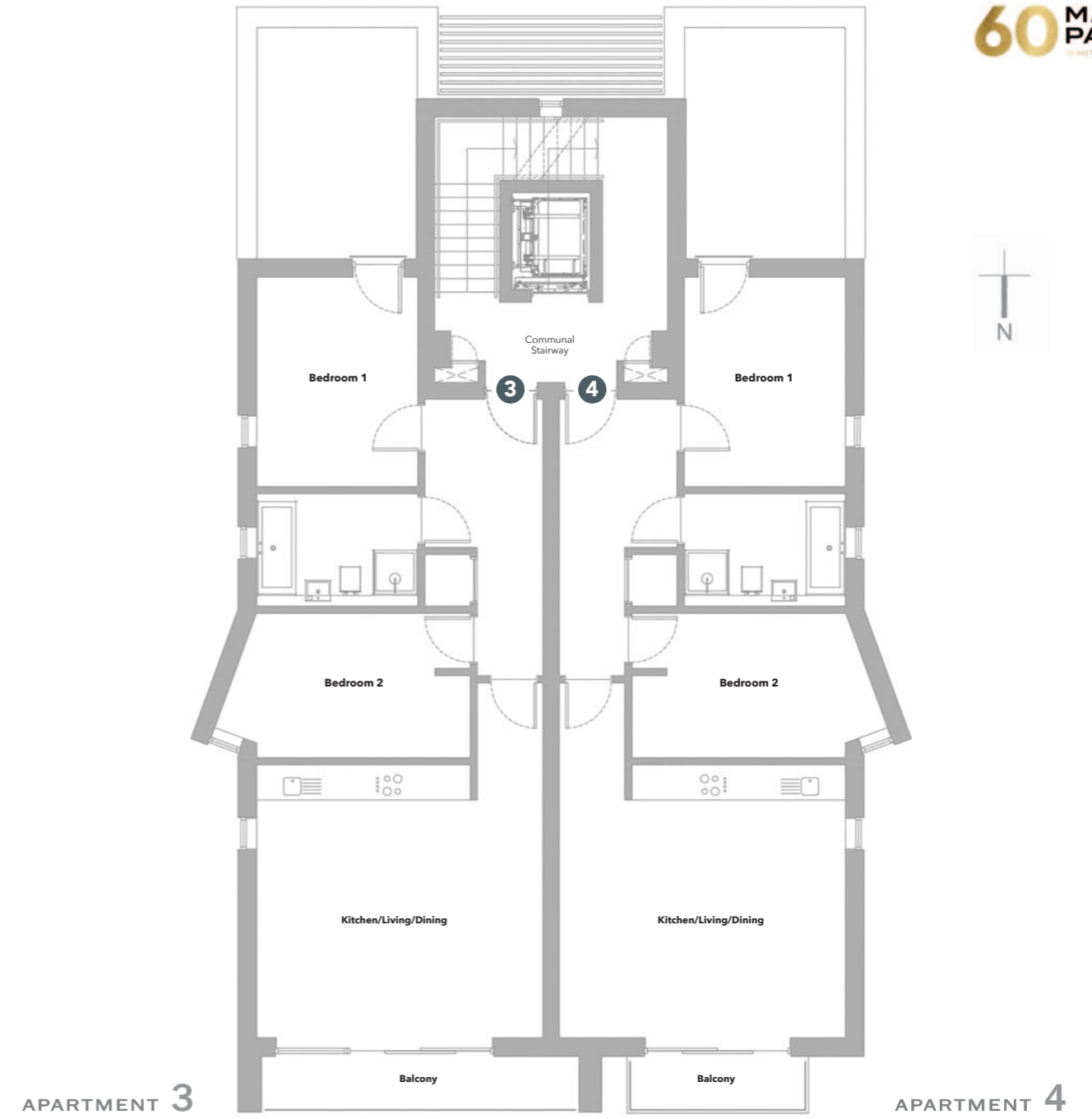
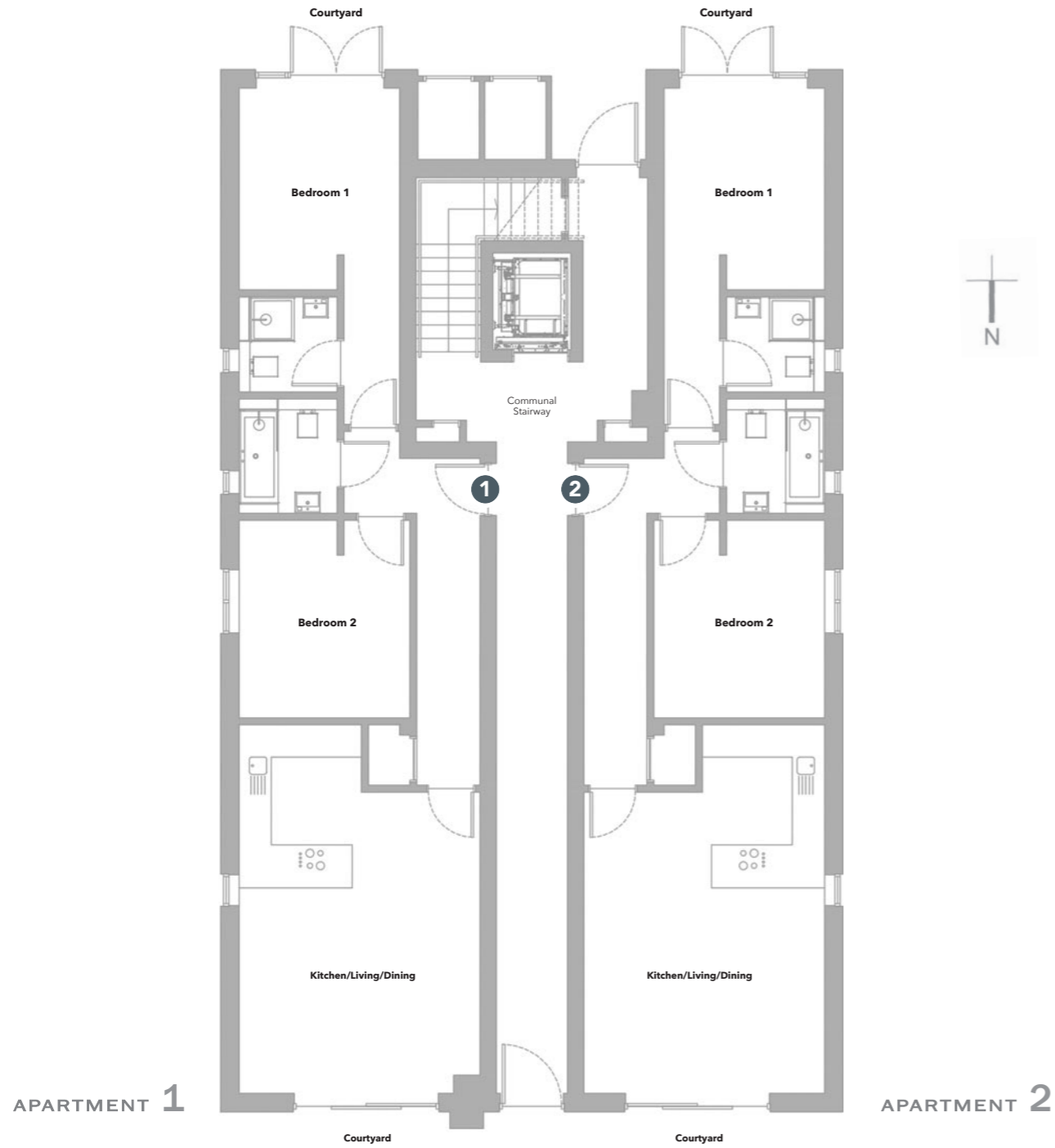
- 'Ideal' combination gas-fired boiler
- Zonally controlled underfloor heating (wet system)
- Black powder coated aluminium external windows and doors
- Sliding doors to balconies and front facing courtyards
- Juliet balconies to principal bedrooms to Apartments 3 & 4, and to Penthouse bedrooms 1, 2 and 3
- Patio doors to rear courtyards (apartments 1 & 2)
- Solar powered opening Velux roof lights (Penthouse only)
- Vaulted ceilings (Penthouse only)
- Glass balustrades to balconies (apartments 3,4 & Penthouse)
- Composite decking to balconies/terraces and courtyard gardens (apartments 1 & 2)
- LED up/down wall lights to balconies/courtyards
- Herringbone LVT flooring to living spaces, hallways, and utility cupboards

### Carpets to bedrooms

- White linear style internal doors with black Nickel furniture
- Switch plates and sockets in black Nickel
- USB points in black Nickel (selected rooms)
- TV/Aerial/BT/sat points (selected rooms)
- Wi-Fi Video phone entry system
- Cabling for high speed fibre broadband connection installed (subscription required)
- Feature coffered ceilings with LED lighting
- Internal wall lights

### Warranty

- 10 year structural warranty provided by Buildzone



**GROUND FLOOR**

**Apartment 1**

Floor area: 73 sq m (785 sq ft)

- **Kitchen/Living/Dining** 6.80m x 4.40m (22'3" x 14'5")
- **Bedroom 1** 3.70m x 2.90m (12'1" x 9'6")
- **En-Suite** 1.80m x 1.70m (5'10" x 5'6")
- **Bathroom** 2.10m x 1.80m (6'10" x 5'10")
- **Bedroom 2** 3.60m x 3.10m (11'9" x 10'2")
- **Utility** 1.10m x 0.70m (3'7" x 2'3")
- **Front Courtyard** 4.70m x 3.60m (15'5" x 11'9")
- **Rear Courtyard** 3.20m x 2.30m (10'5" x 7'6")

**Apartment 2**

Floor area: 73 sq m (785 sq ft)

- **Kitchen/Living/Dining** 6.80m x 4.40m (22'3" x 14'5")
- **Bedroom 1** 3.70m x 2.90m (12'1" x 9'6")
- **En-Suite** 1.80m x 1.70m (5'10" x 5'6")
- **Bathroom** 2.10m x 1.80m (6'10" x 5'10")
- **Bedroom 2** 3.60m x 3.10m (11'9" x 10'2")
- **Utility** 1.10m x 0.70m (3'7" x 2'3")
- **Front Courtyard** 4.70m x 3.60m (15'5" x 11'9")
- **Rear Courtyard** 3.20m x 2.30m (10'5" x 7'6")

**FIRST FLOOR**

**Apartment 3**

Floor area: 70 sq m (753 sq ft)

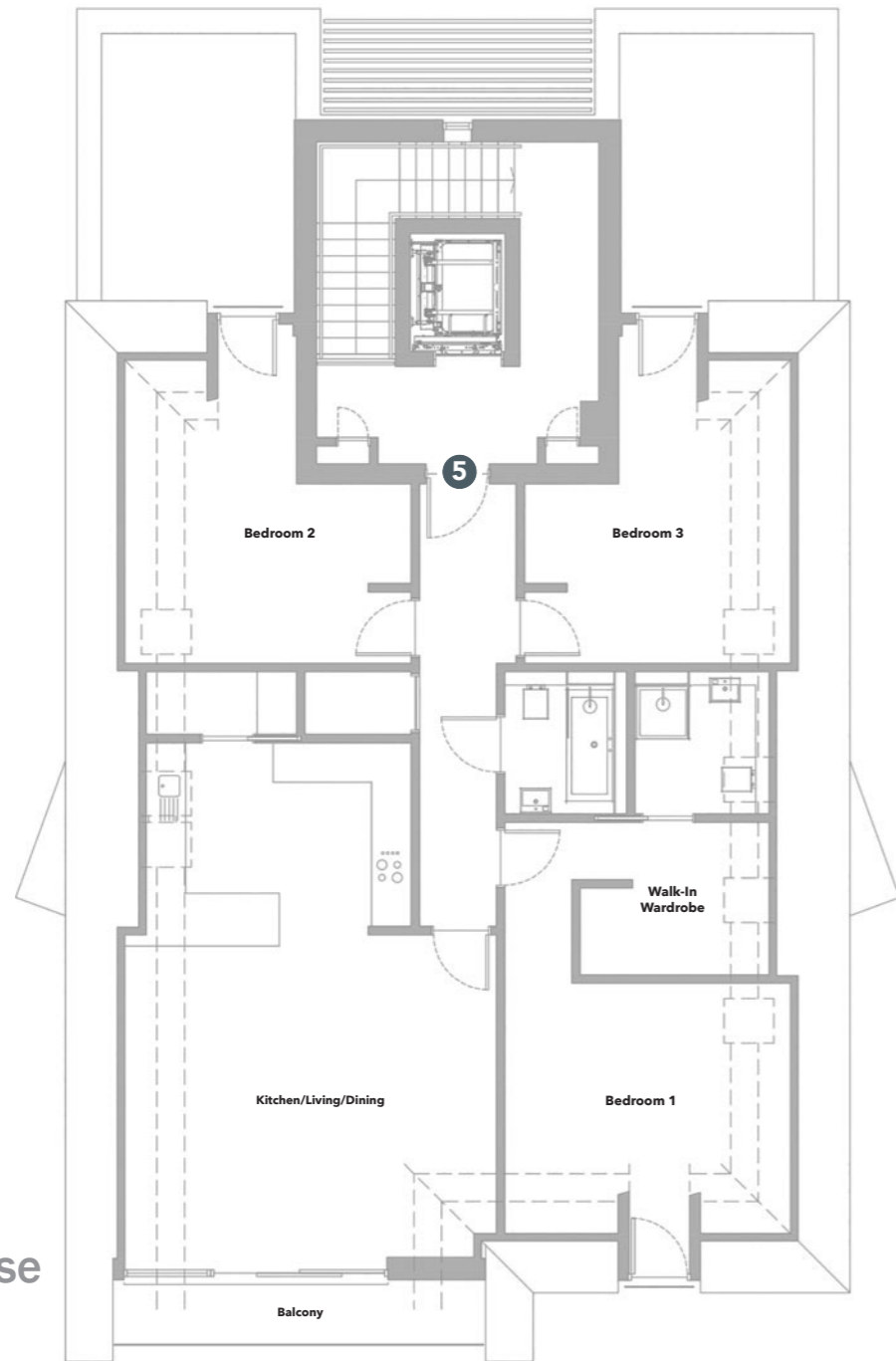
- **Kitchen/Living/Dining** 5.20m x 5.00m (17'0" x 16'4")
- **Bedroom 1** 3.80m x 2.90m (12'5" x 9'6")
- **Bathroom** 2.90m x 2.00m (9'6" x 6'6")
- **Bedroom 2** 4.70m x 2.60m (15'5" x 8'6")
- **Utility** 0.90m x 0.80m (2'11" x 2'7")
- **Balcony** 3.20m x 0.90m (10'5" x 2'11")

**Apartment 4**

Floor area: 70 sq m (753 sq ft)

- **Kitchen/Living/Dining** 5.20m x 5.00m (17'0" x 16'4")
- **Bedroom 1** 3.80m x 2.90m (12'5" x 9'6")
- **Bathroom** 2.90m x 2.00m (9'6" x 6'6")
- **Bedroom 2** 4.70m x 2.60m (15'5" x 8'6")
- **Utility** 0.90m x 0.80m (2'11" x 2'7")
- **Balcony** 3.20m x 0.90m (10'5" x 2'11")





Penthouse

**SECOND FLOOR**

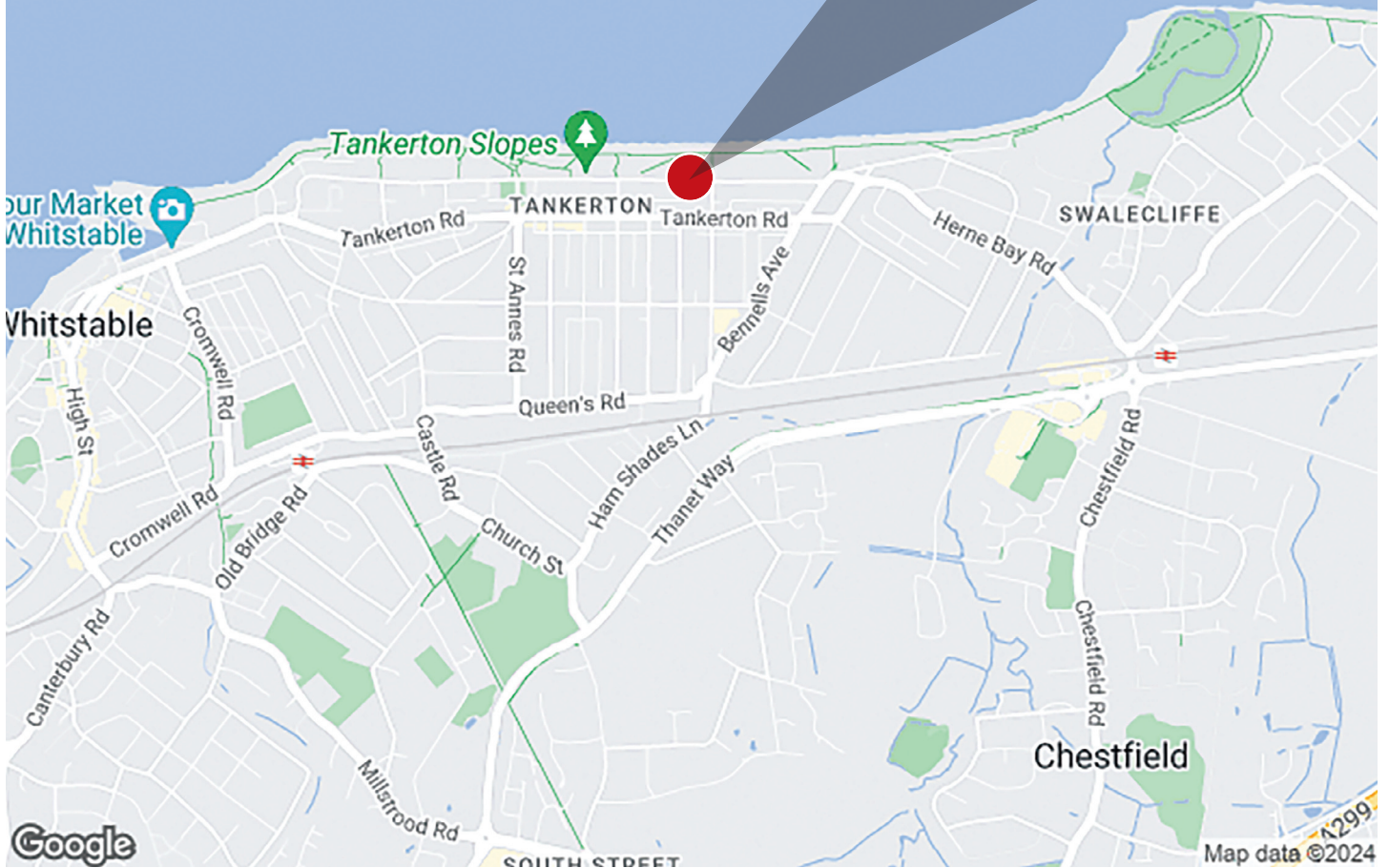
**Apartment 5**

Floor area: 126 sq m (1,356 sq ft)

- |                         |                               |                  |                               |
|-------------------------|-------------------------------|------------------|-------------------------------|
| - Kitchen/Living/Dining | 8.00m x 5.60m (26'2" x 18'4") | - Utility        | 2.20m x 0.90m (7'2" x 2'11")  |
| - Bedroom 1             | 4.30m x 3.80m (14'1" x 12'5") | - Store Cupboard | 1.60m x 0.90m (5'2" x 2'11")  |
| - Walk-In Wardrobe      | 2.80m x 2.30m (9'2" x 7'6")   | - Front Balcony  | 5.60m x 0.90m (18'4" x 2'11") |
| - En-Suite              | 2.10m x 2.00m (6'10" x 6'6")  |                  |                               |
| - Bedroom 2             | 4.60m x 4.00m (15'1" x 13'1") |                  |                               |
| - Bedroom 3             | 4.60m x 4.00m (15'1" x 13'1") |                  |                               |
| - Bathroom              | 2.10m x 1.80m (6'10" x 5'10") |                  |                               |







FOR FURTHER INFORMATION, CONTACT



95/97 Tankerton Road . Whitstable . Kent CT5 2AJ . t: 01227 266441 . e: sales@christopherhodgson.co.uk  
[www.christopherhodgson.co.uk](http://www.christopherhodgson.co.uk)

VIEWING STRICTLY BY PRIOR APPOINTMENT

**DISCLAIMER**

Christopher Hodgson Estate Agents for itself and as agent for the vendor or lessor (as appropriate) gives notice that: **1** These particulars are only a general outline for the guidance of intending purchasers or lessees and do not constitute in whole or in part an offer or a Contract. **2** Reasonable endeavours have been made to ensure that the information given in these particulars is materially correct but any intending purchaser or lessee should satisfy themselves by inspection, searches, enquiries and survey as to the correctness of each statement. **3** All statements in these particulars are made without responsibility on the part of Christopher Hodgson Estate Agents or the vendor or lessor. **4** No statement in these particulars is to be relied upon as a statement or representation of fact. **5** Neither Christopher Hodgson Estate Agents nor anyone in its employment or acting on its behalf has authority to make any representation or warranty in relation to this property. **6** Nothing in these particulars shall be deemed to be a statement that the property is in good repair or condition or otherwise nor that any services or facilities are in good working order. **7** Photographs may show only certain parts and aspects of the property at the time when the photographs were taken and you should rely upon actual inspection. **8** No assumption should be made in respect of parts of the property not shown in photographs. **9** Any areas, measurements or distances are only approximate. **10** Any reference to alterations or use is not intended to be a statement that any necessary planning, building regulation, listed building or any other consent has been obtained. **11** Amounts quoted are exclusive of VAT if applicable. **12** Whilst reasonable endeavours have been made to ensure the accuracy of any floor plan contained in these particulars, all measurements and areas are approximate and no responsibility is taken for any error, omission or mis-statement. This plan is for illustrative purposes only and should be used as such by any prospective purchaser. **13** Any mapping contained within these particulars is for illustrative purposes only and should be used as such by any prospective purchaser. No responsibility is taken for any error, omission or mis-statement. **14** Any computer generated images contained within these particulars are for illustrative purposes only and should be used as such by any prospective purchaser.

**PREDICTED EPC RATINGS**

**Apartments 1 & 2**

- Rating = B (83)

**Apartments 3 & 4**

- Rating = B (86)

**Apartment 5 - Penthouse**

- Rating = B (86)