



CHRISTOPHER HODGSON

Canterbury

Augusten, 5 Puckle Lane, Canterbury, Kent, CT1 3JX

Freehold

A unique and exciting opportunity to acquire a generous potential building plot of approximately 0.35 of an acre, with a frontage to Puckle Lane of 111 ft (38.83m) and an overall depth of 181 ft (55.17m).

'Augusten' is in a prime location moments from the City centre, which offers an excellent range of shopping and cultural facilities, and within close proximity to highly regarded schools, The St. Lawrence Cricket Ground, Canterbury bus station and both Canterbury East (0.6 miles) and West (1.2 miles) mainline railway station which provides High Speed services to London.

There is considerable scope for re-development or to extend and remodel the existing house. Planning consent has been granted under reference CA/21/02957, but interested parties are advised to make their own enquiries relating to planning

matters via Canterbury City Council; www.canterbury.gov.uk/planning.

The existing accommodation is arranged on the ground floor to provide an entrance porch, entrance hall, large sitting/dining room with doors opening to a terrace, kitchen/breakfast room with utility room, a conservatory, study, a double bedroom, shower room and a bathroom.

To the first floor there are three further bedrooms, including a large principal bedroom suite with en-suite bathroom and a dressing room, which could be utilised as a nursery or fifth bedroom.

The property is approached by a gently sloping driveway which, provides ample parking for a number of vehicles and access to a detached double garage. The gardens are a particularly attractive feature, planted with many mature shrubs and trees and surrounding the property on all sides. No onward chain.

Location

Puckle Lane is situated less than a mile from the City centre and conveniently positioned for access to both Canterbury East mainline station (0.6 miles distant), Canterbury West mainline station (1.2 miles distant) and Canterbury bus station. The Cathedral City, which is designated a UNESCO World Heritage Site, offers a wealth of cultural and leisure amenities including theatres, bars, restaurants and a major shopping centre enjoying a range of mainstream retail outlets as well as many individual and designer shops. The City also benefits from excellent educational facilities including both public and state schools and higher education institutions. The mainline railway stations offer fast and frequent services to London Victoria (approximately 95mins) and high speed links from Canterbury West to London St Pancras (approximately 56 mins). Communication links are strong with the A2/M2 giving access to the channel ports and connecting motorway network.

Accommodation

The accommodation and approximate measurements are:

GROUND FLOOR

• Entrance Porch

• Entrance Hall 24'3" x 9'9" (7.39m x 2.97m) at maximum points.

• Sitting/ Dining Room 31'7" x 15'0" (9.62m x 4.56m) at maximum points.

• Kitchen 11'8" x 10'3" (3.56m x 3.13m) at maximum points.

• Breakfast Room 7'5" x 7'1" (2.26m x 2.16m) at maximum points.

• Utility Room 9'2" x 9'0" (2.80m x 2.75m) at maximum points.

• Bedroom 4 9'11" x 9'10" (3.02m x 3.00m)

• Study 9'11" x 10'2" (3.02m x 3.09m)

• Shower Room 6'5" x 3'5" (1.96m x 1.04m) at maximum points.

• Bathroom 9'9" x 5'7" (2.97m x 1.70m) at maximum points.

• Conservatory 14'3" x 9'10" (4.34m x 3.00m) at maximum points.

FIRST FLOOR

• Bedroom 1 20'5" x 12'0" (6.22m x 3.66m) at maximum points.

• En-Suite Bathroom

• Dressing Room 10'9" x 10'6" (3.28m x 3.20m) at maximum points.

• Bedroom 2 12'0" x 10'1" (3.65m x 3.08m) at maximum points.

• Bedroom 3 8'11" x 6'5" (2.72m x 1.96m) at maximum points.

• Eaves Storage 7'1" x 6'8" (2.16m x 2.03m) at maximum points.

OUTSIDE

• Double Garage 17'7" x 17'7" (5.36m x 5.36m) at maximum points.

• Front Garden 79' x 76" (24.08m x 23.16m) at maximum points.

• Rear Garden 19 x 34 (5.79m x 10.36m) at maximum points.









Viewing: STRICTLY BY APPOINTMENT WITH CHRISTOPHER HODGSON ESTATE AGENTS

95-97 TANKERTON ROAD, WHITSTABLE CT5 2AJ | 01227 266 441 | INFO@CHRISTOPHERHODGSON.CO.UK | CHRISTOPHERHODGSON.CO.UK

ENERGY PERFORMANCE CERTIFICATE

Energy Efficiency Rating		Current	Potential
Very energy efficient - lower running costs			
(92 plus) A			82
(81-91) B			
(69-80) C			
(55-68) D		64	
(39-54) E			
(21-38) F			
(1-20) G			
Not energy efficient - higher running costs			
England & Wales		EU Directive 2002/91/EC	

Christopher Hodgson Estate Agents for itself and as for the vendor or lessor (as appropriate) gives notice that: 1 These particulars are only a general outline for the guidance of intending purchasers or lessees and do not constitute in whole or in part an offer or a Contract. 2 Reasonable endeavours have been made to ensure that the information given in these particulars is materially correct but any intending purchaser or lessee should satisfy themselves by inspection, searches, enquiries and survey as to the correctness of each statement. 3 All statements in these particulars are made without responsibility on the part of Christopher Hodgson state Agents or the vendor or lessor. 4 No statement in these particulars is to be relied upon as a statement or representation of fact. 5 Neither Christopher Hodgson Estate Agents nor anyone in its employment or acting on its behalf has authority to make any representation or warranty in relation to this property. 6 Nothing in these particulars shall be deemed to be a statement that the property is in good repair or condition or otherwise nor that any services or facilities are in good working order. 7 Photographs may show only certain parts and aspects of the property at the time when the photographs were taken and you should rely upon actual inspection. 8 No assumption should be made in respect of parts of the property not shown in photographs. 9 Any areas, measurements or distances are only approximate. 10 Any reference to alterations or use is not intended to be a statement that any necessary planning, building regulation, listed building or any other consent has been obtained. 11 Amounts quoted are exclusive of VAT if applicable. 12 Whilst reasonable endeavours have been made to ensure the accuracy of any floor plan contained in these particulars, all measurements and areas are approximate and no responsibility is taken for any error, omission or mis-statement. This plan is for illustrative purposes only and should be used as such by any prospective purchaser: 13 Any mapping contained within these particulars is for illustrative purposes only and should be used as such by any prospective purchaser. No responsibility is taken for any error, omission or mis-statement 14 Any computer generated images contained within these particulars are for illustrative purposes only and should be used as such by any prospective purchaser.



Ground Floor

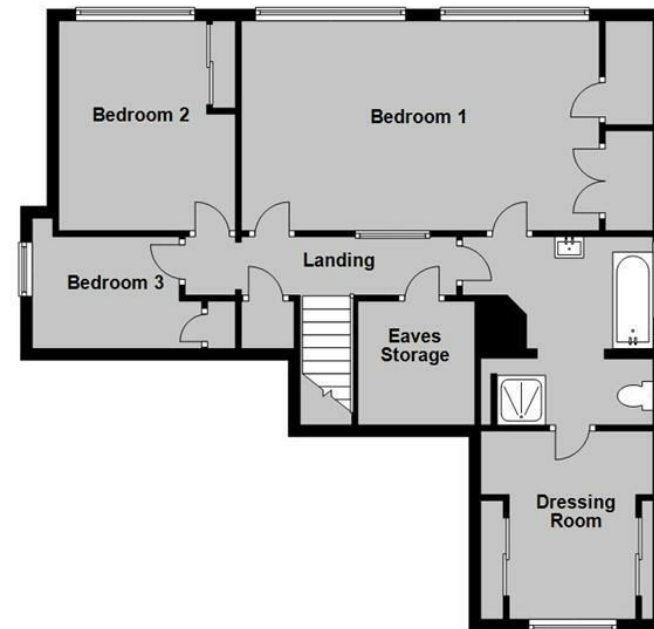
Main area: approx. 137.2 sq. metres (1476.7 sq. feet)
Plus garages, approx. 28.6 sq. metres (307.9 sq. feet)



Main area: Approx. 209.4 sq. metres (2254.4 sq. feet)
Plus garages, approx. 28.6 sq. metres (307.9 sq. feet)

First Floor

Approx. 72.2 sq. metres (777.7 sq. feet)





95-97 TANKERTON ROAD, WHITSTABLE CT5 2AJ | 01227 266 441 | INFO@CHRISTOPHERHODGSON.CO.UK | CHRISTOPHERHODGSON.CO.UK

Estate agency services are provided by Christopher Hodgson Limited, a company incorporated and registered in England and Wales with the number 07108955 whose registered address is at Camburgh House, 27 New Dover Road, Canterbury, Kent CT1 3DN. Director: W G Roalfe