



## **Baltic Quay, Mill Road**

**This modern, open-plan lounge, kitchen dinner, two bedroom apartment is situated on the Gateshead side of the millenium bridge benefitting from views of Newcastle Quayside.**

**£1,000 pcm**

This modern, open-plan lounge, kitchen dinner, two bedroom apartment is situated on the Gateshead side of the millenium bridge benefitting from views of Newcastle Quayside.



### HALLWAY

Entrance to upper apartment woodern flooring large storage cupboard.



### LOUNGE

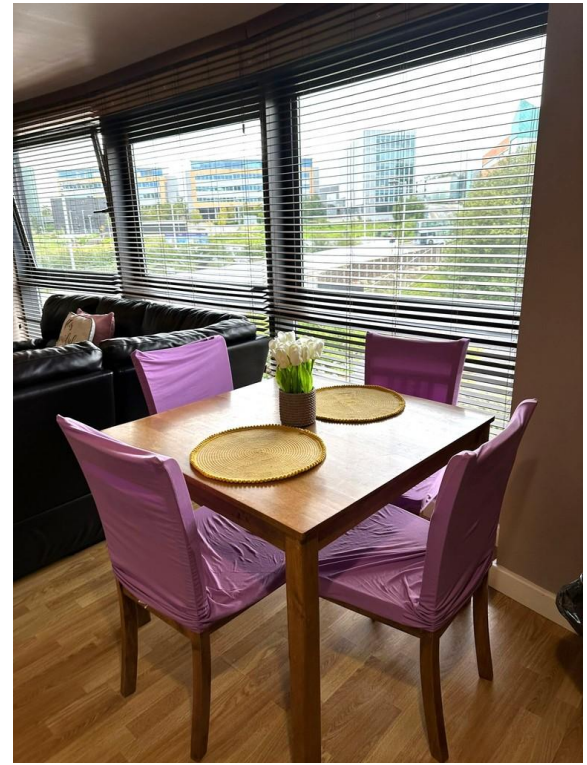
Three large double glazed windows, electric storage heater. Woodern flooring Open plan lounge kitchen/dinning area.





### OPEN PLAN DINNING AREA

Three large double glazed windows, electric storage heater. Woodern flooring Open plan lounge kitchen/dinning area.

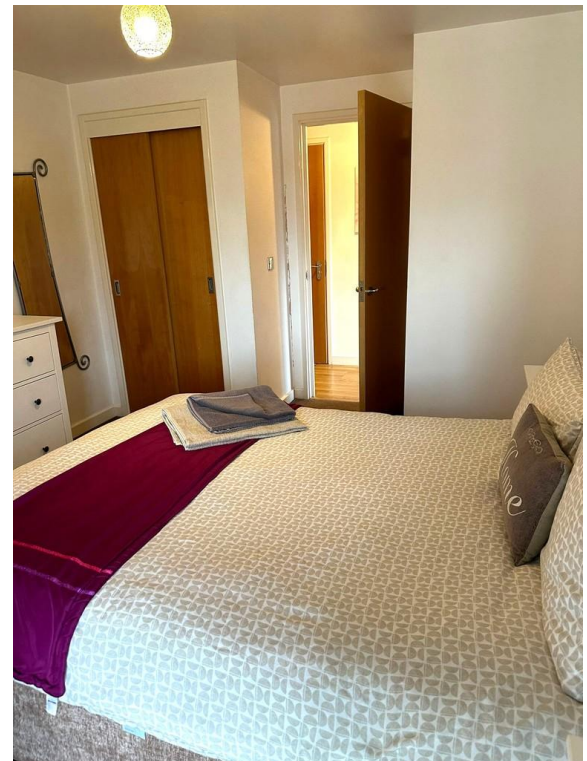


### OPEN PLAN KITCHEN

Three large double glazed windows, electric storage heater. Woodern flooring Open plan lounge kitchen/dinning area.

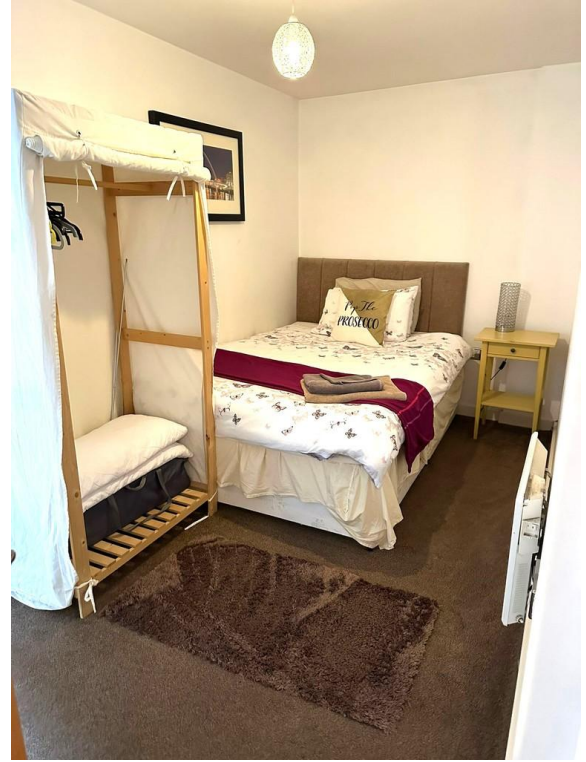
### BEDROOM ONE

Electric storage heater built in Wardrobe large double glazed window.



## BEDROOM 2

Electric storage heater, double window



## BATHROOM

Shower over the bath, wc and sink



## BATHROOM



%epcGraph\_c\_1\_167%