



Granby Terrace, Sunnyside

Beautifully presented first floor apartment with ground floor commercial dwelling which is currently been used as a physical therapist. The partition walls could be removed to make to one large open space. The first-floor apartment offers an open plan living space, comprising kitchen/lounge, two bedrooms one would be ideally suited as office space/study area, with open loft storage area, wooden loft ladder and Velux window. To the ground floor is the entrance door to a reception area, comprising two rooms for multiple uses, office space or treatment rooms, small kitchen and WC, small rear yard with two outbuildings for storage and

Offers Invited £160,000

Beautifully presented first floor apartment with ground floor commercial dwelling. The first-floor apartment offers an open plan living space, comprising kitchen/lounge, two bedrooms one would be ideally suited as office space/study area, with open loft storage area, wooden loft ladder and Velux window. To the ground floor is the entrance door to a reception area, comprising two rooms for multiple uses, office space or treatment rooms, small kitchen and WC, small rear yard with two outbuildings for storage and shared rear yard with access for bins. On street parking for car. The property would suit an investor or business premises with accommodation onsite. Available with no onward chain. Early viewing is highly recommended.



FIRST FLOOR APARTMENT

Entrance door to hallway, stairs to first floor.

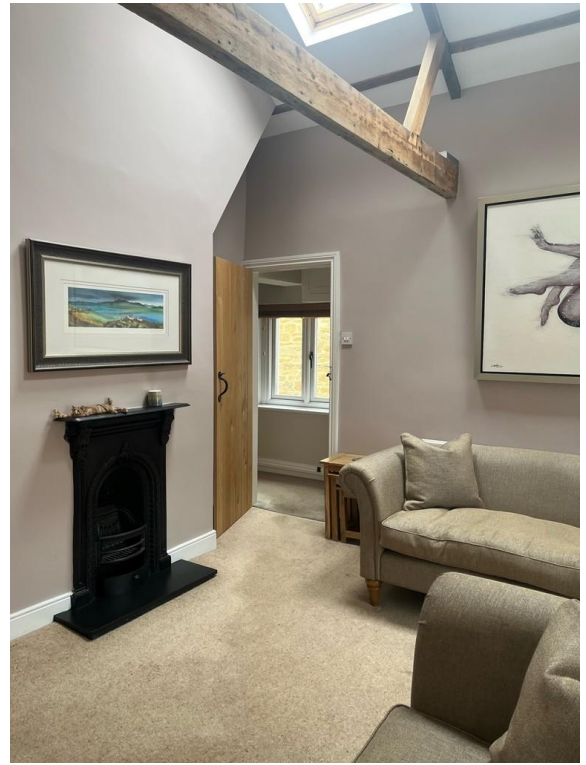
OPEN PLAN LOUNGE/KITCHEN AREA

13' 6" x 16' 9" (4.11m x 5.11m)

Double glazed windows, feature beams to ceiling, cast iron effect fireplace to wall. Fitted kitchen units with integrated appliances, fridge freezer, plumbing for automatic washing machine, electric oven, and induction hob. Underlighting to units and spotlights to ceiling, sink unit with mixer tap.



ADDITIONAL OPEN PLAN LIVING PHOTO



ADDITIONAL KITCHEN PHOTO



BEDROOM ONE

10' 9" x 10' 8" (3.28m x 3.25m)

Double glazed window, central heating radiator, storage cupboard to wall.



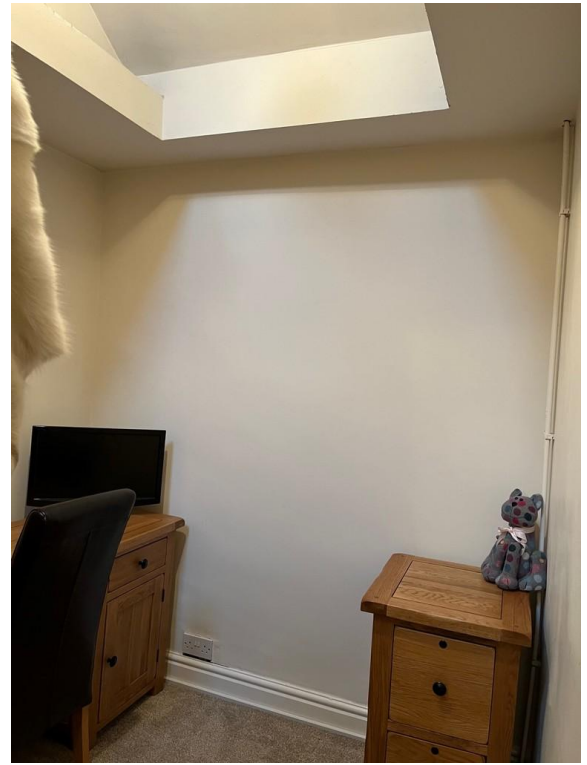
ADDITIONAL BEDROOM ONE PHOTO



BEDROOM TWO/STUDY

8' 9" x 6' 6" (2.67m x 1.98m)

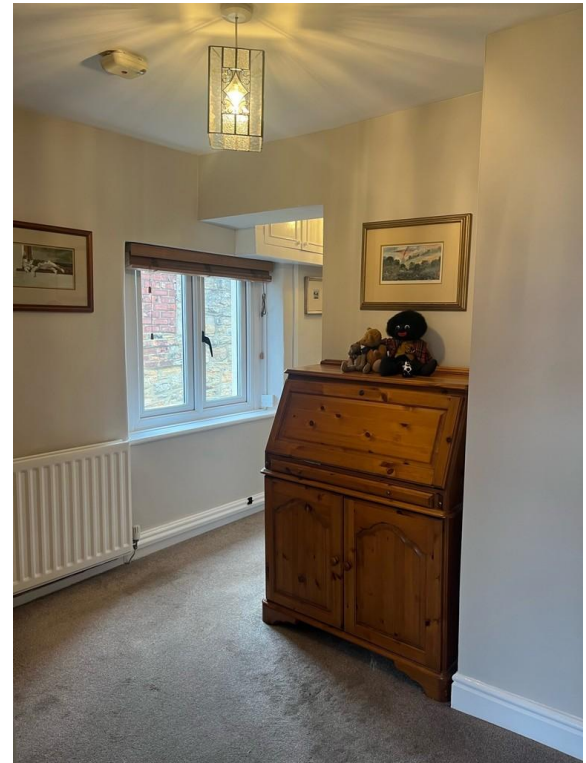
Stairs to loft access and storage space, Velux window, central heating radiator.



ADDITIONAL BEDROOM TWO PHOTO



HALLWAY



BATHROOM

white suite comprising panel bath with rainfall shower over the bath and screen. WC pedestal hand wash basin, double glazed window.



ADDITIONAL BATHROOM |PHOTO

