



2 Handford Drive, Sheringham, NR26 8QF

Price Guide £475,000

- Highly favoured location
- Two reception rooms
- Two bathrooms
- Attractive gardens
- A home of charm and character
- Four bedrooms
- Photovoltaic panels and storage batteries
- Close to Beeston Common

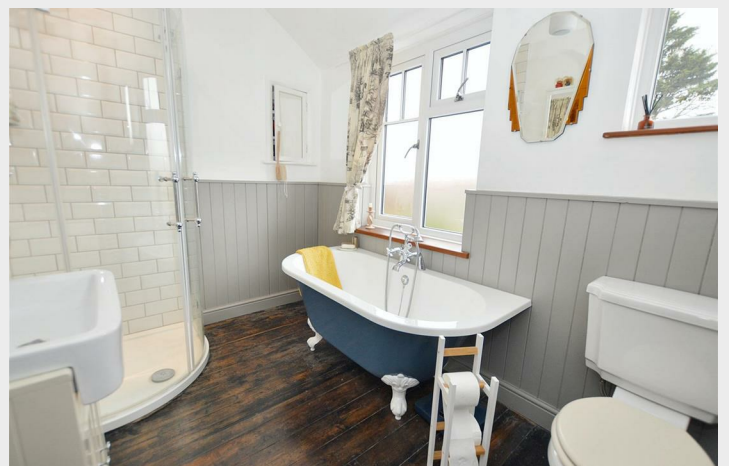
2 Handford Drive, Sheringham NR26 8QF

Set in a quiet backwater close to Beeston Common is this attractive and beautifully proportioned semi-detached dwelling offering individual accommodation of character. The property has recently been updated by the current owners and offers four bedrooms and two bathrooms. The accommodation has been enhanced by the addition of a large garden room at the rear.

The property has the benefit of modern electric heaters throughout and these are supplemented by a large wood burning stove in the sitting room. Further efficiencies are gained from the photovoltaic panels and storage batteries.



Council Tax Band: C



ENTRANCE HALL

Entrance door with leaded glass panel and matching window to the side, pamment stone floor, staircase to first floor, door to:

SHOWER ROOM

Double width, level entry shower cubicle with mixer shower, close coupled w.c., pedestal wash basin, heated towel rail, wall mounted cabinet, part tiled walls, tiled floor.

DINING AREA

Bay window to front aspect with leaded glass, wall mounted electric heater, beamed ceiling, Delph rail, feature brick and timber fireplace with open fire if required. Polished wood floor leading to the open plan:

SITTING ROOM

Wall mounted electric heater, beamed ceiling, Delph rail, recess housing wood burning stove with timber mantel above, provision for TV, continuation of the polished wood floor, two windows and twin panelled doors opening to:

GARDEN ROOM

A beautiful light room with windows overlooking the rear garden. Wall mounted electric heater, glass roof, tiled floor. Door to rear garden, part glazed UPVC door leading to:

KITCHEN

Pamment stone floor, range of shaker style base and wall units with composite work surfaces, matching upstands and tiled splashbacks. plumbing for washing machine and dishwasher, inset induction hob with stainless steel hood above, integrated electric double oven, inset sink unit, window to side aspect, large walk-in shelved larder cupboard with window to side aspect.

FIRST FLOOR

LANDING

Wall mounted electric heater, access to roof space, window to side aspect, large walk-in airing cupboard with pressurised water cylinder.

BEDROOM 1

With leaded window to front aspect, wall mounted electric heater, period stone fire surround with hearth.

BEDROOM 2

Window to rear aspect, wall mounted electric heater, period stone fireplace with hearth.

BEDROOM 3

With feature leaded, angled oriel window to front aspect, wall mounted electric heater,

BEDROOM 4

Window to side aspect, wall mounted electric heater, period fireplace.

BATHROOM

Two windows to rear aspect, corner shower enclosure with mixer shower, metro tiled splashbacks, vanity wash basin with cupboards beneath, wall mounted cabinet, close coupled w.c., freestanding bath with central mixer tap and telephone shower attachment, heated towel rail, part panelled wall, stripped wood floor.

OUTSIDE

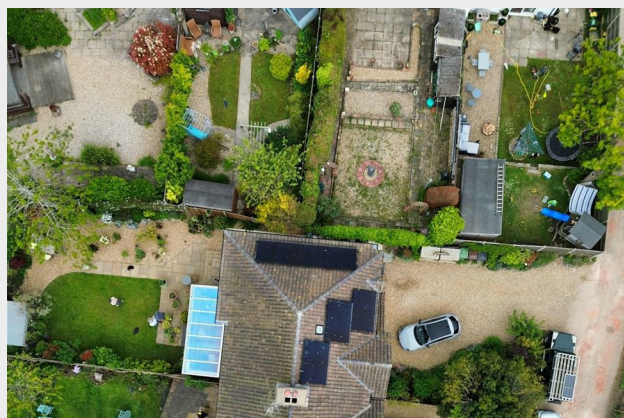
Integral WORKSHOP: With part glazed double entrance doors, storage batteries served by the photovoltaic panels. Electric light and power point.

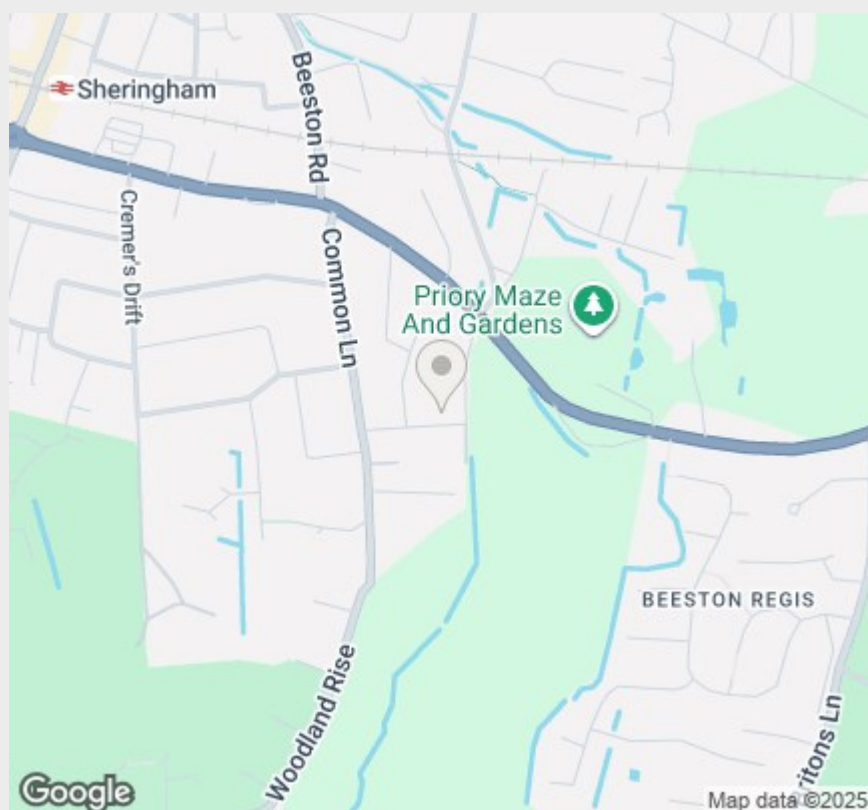
GARDENS

To the front of the property is a wide shingled area providing off-road parking for at least two vehicles, with established planting to the side. Timber LOG STORE. A gated access then leads to the fully enclosed rear garden which has been landscaped with a paved patio leading to a lawned area with border planting leading to a further shingled area.

AGENTS NOTE

The property is freehold, has mains electricity, water and drainage connected. Photovoltaic panels and storage batteries. The property has a Council Tax Rating of Band C.






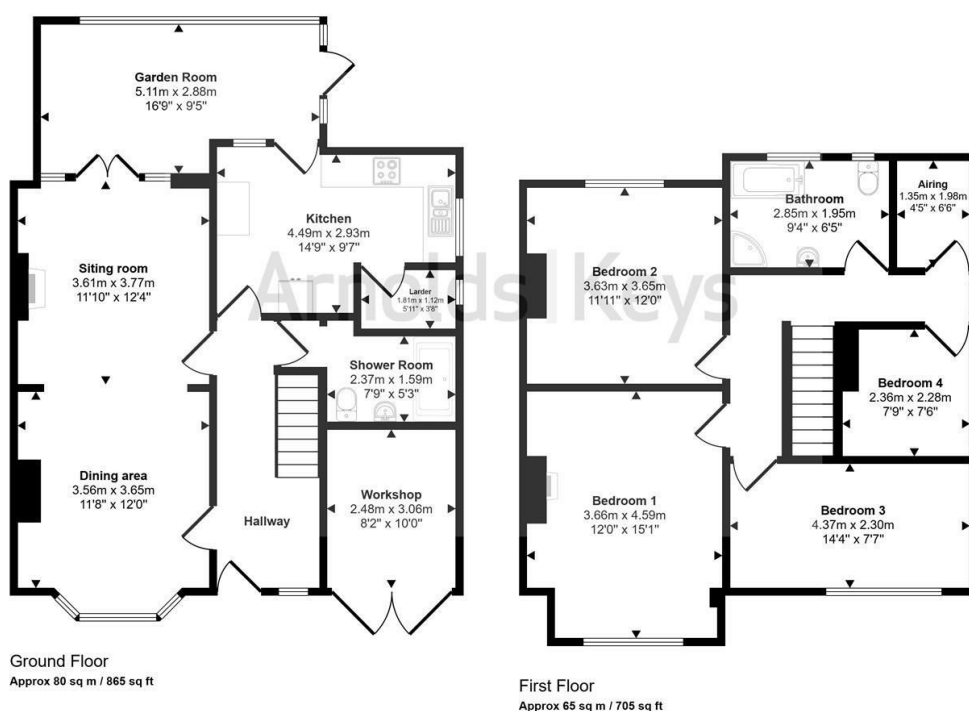
Viewings

Viewings by arrangement only. Call 01263 822373 to make an appointment.

EPC Rating:

Energy Efficiency Rating		
	Current	Potential
Very energy efficient - lower running costs		
(92 plus) A		82
(81-91) B		
(69-80) C		
(55-68) D		
(39-54) E	49	
(21-38) F		
(1-20) G		
Not energy efficient - higher running costs		
England & Wales		EU Directive 2002/91/EC 

Approx Gross Internal Area
146 sq m / 1570 sq ft



This floorplan is only for illustrative purposes and is not to scale. Measurements of rooms, doors, windows, and any items are approximate and no responsibility is taken for any error, omission or mis-statement. Icons of items such as bathroom suites are representations only and may not look like the real items. Made with Made Snappy 360.

Agents Note: Whilst every care has been taken to prepare these sales particulars, they are for guidance purposes only. All measurements are approximate for general guidance purposes only and whilst every care has been taken to ensure their accuracy, they should not be relied upon, and potential buyers are advised to recheck the measurements. Appliances will not have been tested in all cases and we cannot confirm they are in working order.

Arnolds Keys from time to time, recommends conveyancing services. Should you decide to use them we could receive a referral fee of up to £210. Arnolds Keys recommend Yellow Brick (YB) to sellers and buyer for mortgage advice. Should you decide to use YB we could receive a referral fee of £250.



11 Station Road, Sheringham, Norfolk, NR26 8RE
01263 822373

coastal@arnoldskeys.com
www.arnoldskeys.com