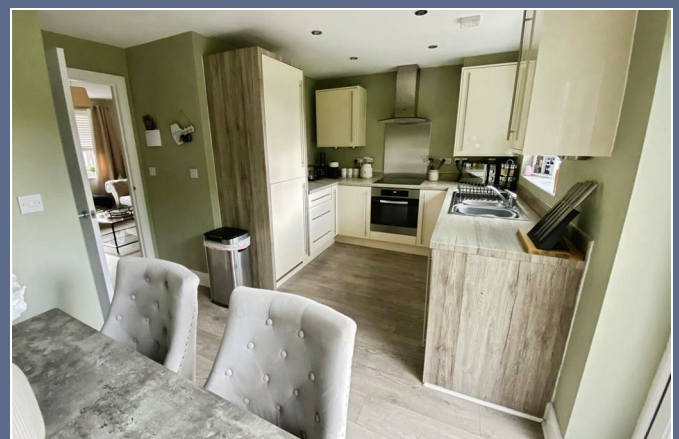




Goss Place
Alsager



£1,100



alsagerlettings@stephensonbrowne.co.uk

15 Crewe Road
Alsager
Stoke-On-Trent
Staffordshire

f StephensonBrowneAlsager



t @sbalsager

19 Goss Place Alsager Cheshire ST7 2LR

BACK ON! Presenting an immaculate three-bedroom terraced home to let, ideally situated with convenient access to public transport links. This beautifully maintained property offers a harmonious blend of modern comfort and functional living spaces, perfectly suited to those seeking an elegant, move-in ready residence.

The accommodation comprises one good sized reception room, offering a versatile area for relaxing or entertaining guests. The contemporary kitchen is thoughtfully designed, promising an efficient and enjoyable cooking environment.

Upstairs, the property features two double bedrooms and a single bedrooms, with the master bedroom benefitting from a luxurious en-suite shower room and built-in wardrobes. The home further boasts a second bathroom, supporting the requirements of a growing family or professional sharers.

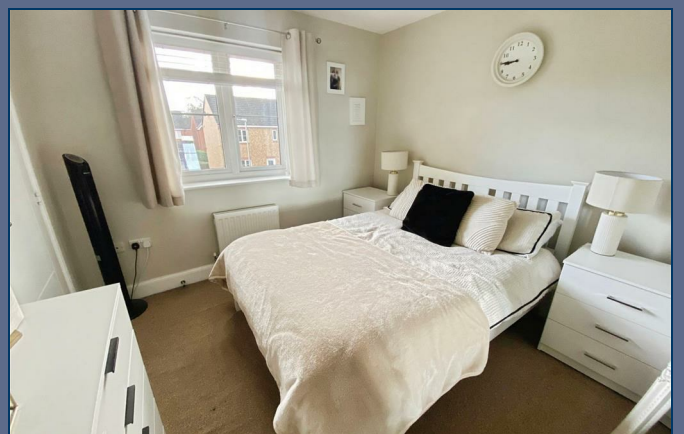
This remarkable terraced property represents an excellent opportunity for discerning tenants seeking comfort, convenience, and style. Early viewing is highly recommended to fully appreciate all the features this outstanding home has to offer.

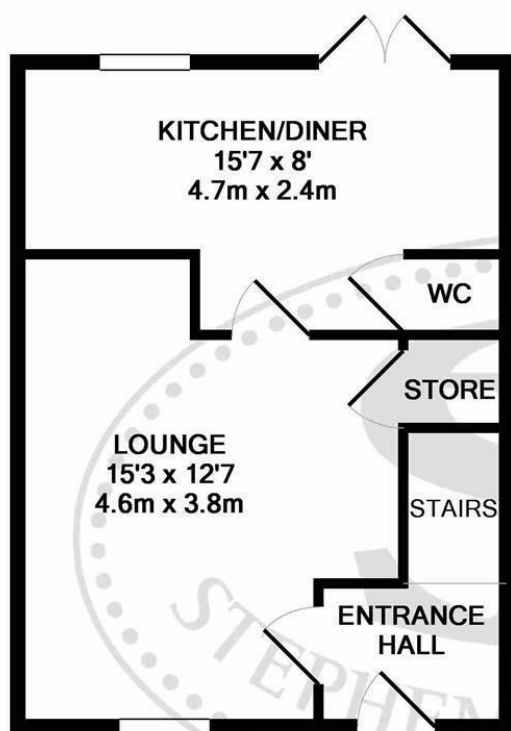
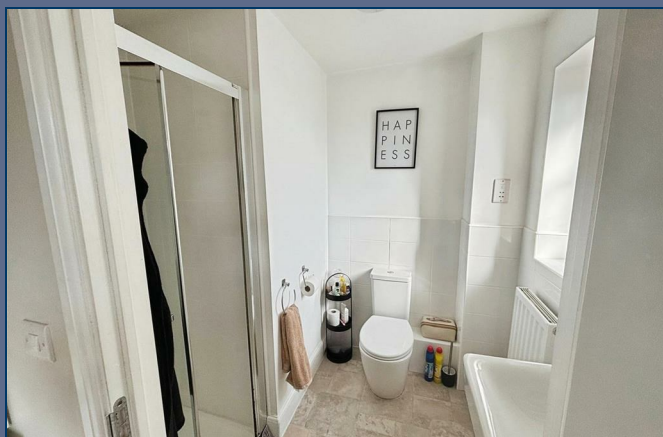
Enclosed garden to the rear which is principally lawned but enjoys a patio area that is not overlooked and two parking spaces to the front. Ready for let early November. Council Tax band C, EPC B. Long Term let and alternative deposit option available.



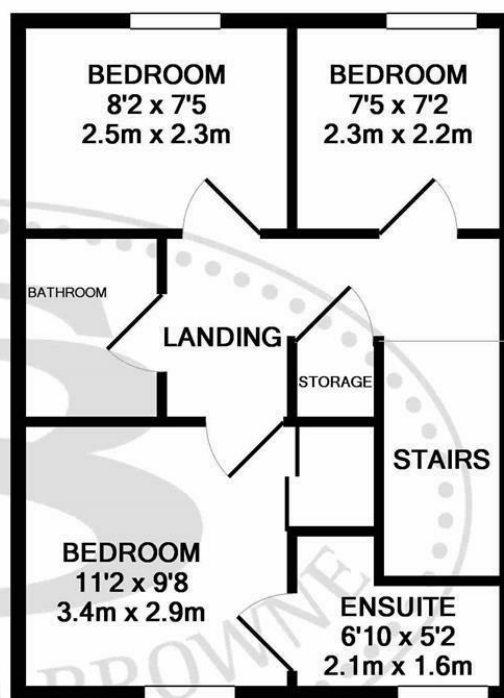
£1,100







GROUND FLOOR
APPROX. FLOOR
AREA 327 SQ.FT.
(30.4 SQ.M.)



1ST FLOOR
APPROX. FLOOR
AREA 331 SQ.FT.
(30.8 SQ.M.)

TOTAL APPROX. FLOOR AREA 659 SQ.FT. (61.2 SQ.M.)

Whilst every attempt has been made to ensure the accuracy of the floor plan contained here, measurements of doors, windows, rooms and any other items are approximate and no responsibility is taken for any error, omission, or mis-statement. This plan is for illustrative purposes only and should be used as such by any prospective purchaser. The services, systems and appliances shown have not been tested and no guarantee as to their operability or efficiency can be given

Made with Metropix ©2017

Stephenson Browne Estate Agents

Newcastle
56 Merrial Street, Newcastle under Lyme
Staffordshire, ST5 2AJ
Tel: 01782 625734

Sandbach
38 High Street, Sandbach
Cheshire, CW11 1AN
Tel: 01270 763200

Alsager
13 Crewe Road, Alsager
Stoke on Trent, ST7 2EW
Tel: 01270 883130

NOT TO SCALE These floor plans are given as a guide only. Full completed measurements and details should be verified by any intending purchasers legal representative.

NOTICE: Stephenson Browne for themselves and for the vendors or lessors of this property whose agents they are give notice that: (1) the particulars are set out as a general guideline only for the guidance of intending purchasers or lessees, and do not constitute, nor constitute part of, an offer or contract; (2) all descriptions, dimensions, references to condition and necessary permissions for use and occupation, and other details are given in good faith and are believed to be correct but any intending purchasers or tenants should not rely on them as statements or representations of fact but must satisfy themselves by inspection or otherwise as to the correctness of each theme; (3) no person in the employment of Stephenson Browne has any authority to make representation or warranty whatever in relation to this property. (4) fixtures & fittings are subject to a formal list supplied by the vendors solicitors.