



Francis Jepson Close
Stoke on Trent



£1,200



alsagerlettings@stephensonbrowne.co.uk

15 Crewe Road
Alsager
Stoke-On-Trent
Staffordshire

f StephensonBrowneAlsager



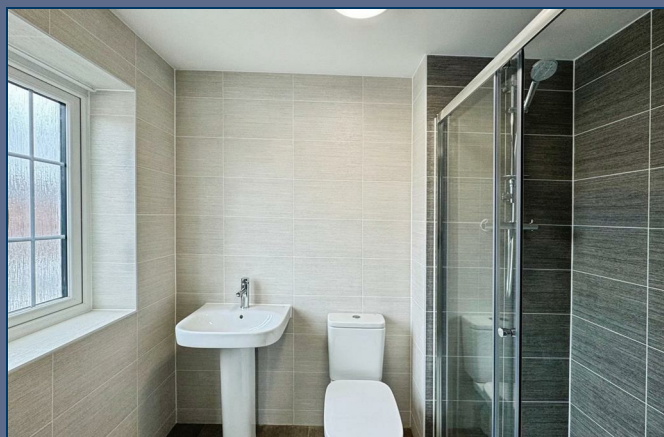
t @sbalsager

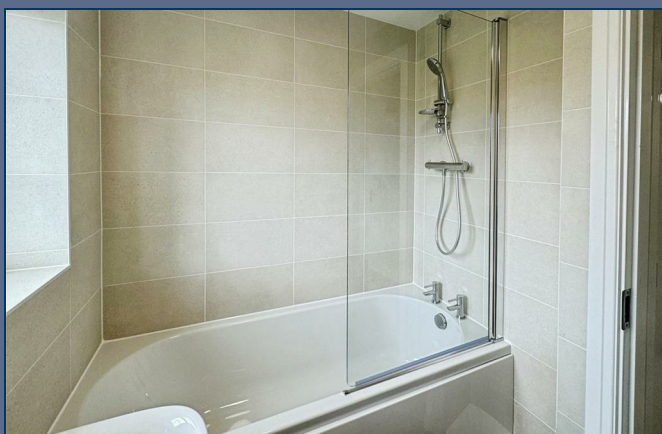
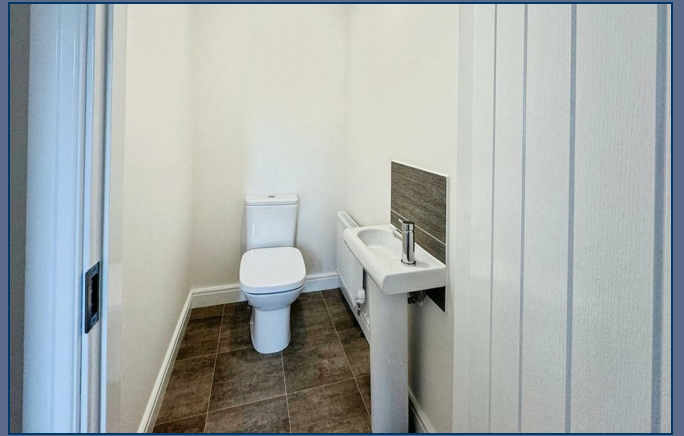
19 Francis Jepson Close Stoke on Trent

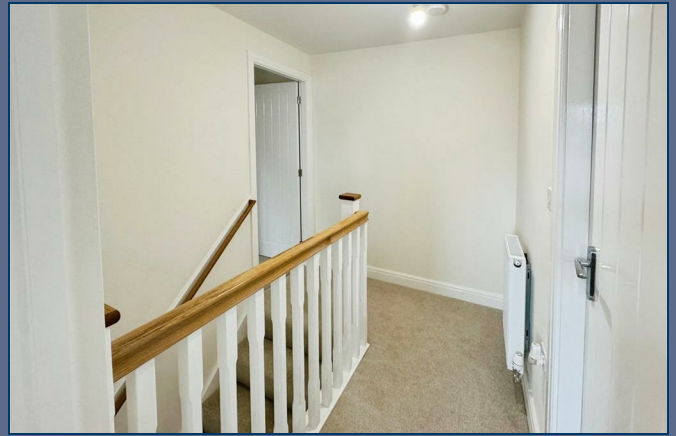
ST7 2ZQ

RECENT NEW BUILD on the Wain Homes development in Alsager. Beautifully presented with large reception lounge, ground floor cloaks/WC, attractive kitchen with space for washing machine and fridge freezer. Dining area overlooking the south facing patio area with lawned garden. Master double bedroom with fully tiled ensuite shower room, two further spacious bedrooms and family bathroom with shower over bath. Fully carpeted throughout. Two allocated parking spaces with electric charge. Not overlooked. Up to date features with modern child safety and sound absorbing acoustic ventilation. Council Tax Band C. EPC Grade B. Long Term Let. Available July/August 2025.

£1,200







Stephenson Browne Estate Agents

Newcastle
56 Merrial Street, Newcastle under Lyme
Staffordshire, ST5 2AJ
Tel: 01782 625734

Sandbach
38 High Street, Sandbach
Cheshire, CW11 1AN
Tel: 01270 763200

Alsager
13 Crewe Road, Alsager
Stoke on Trent, ST7 2EW
Tel: 01270 883130

NOT TO SCALE These floor plans are given as a guide only. Full completed measurements and details should be verified by any intending purchasers legal representative.

NOTICE: Stephenson Browne for themselves and for the vendors or lessors of this property whose agents they are give notice that: (1) the particulars are set out as a general guideline only for the guidance of intending purchasers or lessees, and do not constitute, nor constitute part of, an offer or contract; (2) all descriptions, dimensions, references to condition and necessary permissions for use and occupation, and other details are given in good faith and are believed to be correct but any intending purchasers or tenants should not rely on them as statements or representations of fact but must satisfy themselves by inspection or otherwise as to the correctness of each theme; (3) no person in the employment of Stephenson Browne has any authority to make representation or warranty whatever in relation to this property. (4) fixtures & fittings are subject to a formal list supplied by the vendors solicitors.