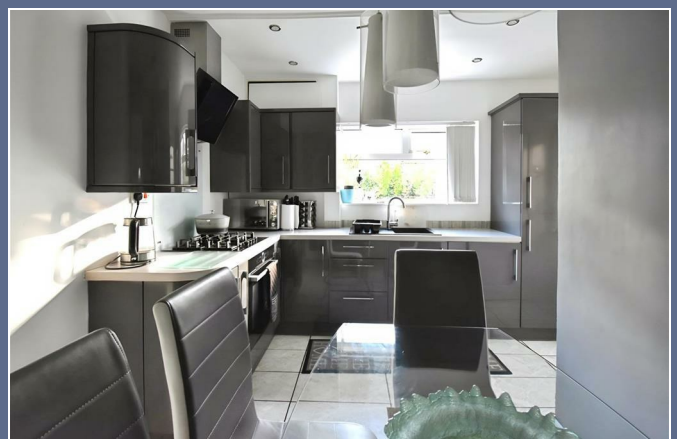




Maple Avenue
Stoke-On-Trent



£1,000



alsagerlettings@stephensonbrowne.co.uk

15 Crewe Road
Alsager
Stoke-On-Trent
Staffordshire

f StephensonBrowneAlsager



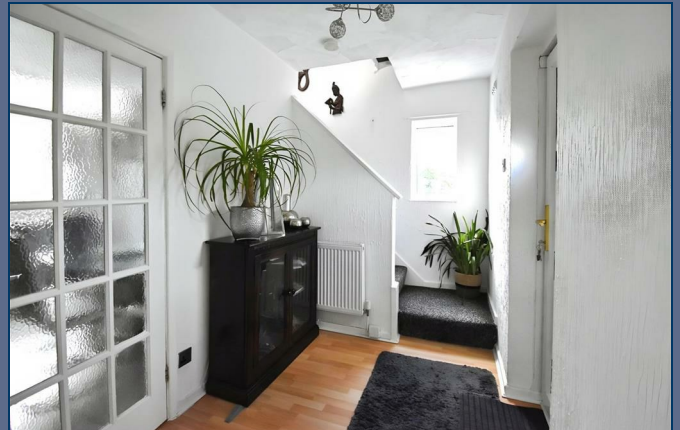
t @sbalsager

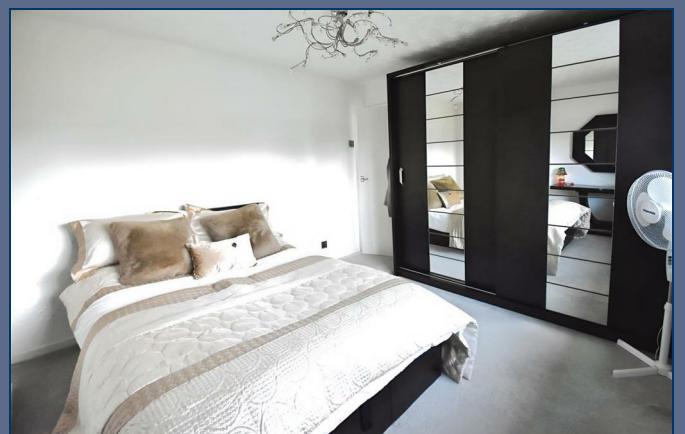
46 Maple Avenue Stoke-On-Trent

ST7 1JW

This property is stunning!!!! A beautifully presented and maintained three bed semi detached house with a complete homely feel. Larger than average, the property offers generous living accommodation with spacious hallway, large lounge with dual aspect panoramic windows, modern high gloss kitchen with integrated fridge/freezer, oven and hob, separate pantry, rear vestibule leading onto a brick store, utility store and WC. To the first floor are three spacious bedrooms, two double and one single, landing storage cupboard housing recently fitted boiler, stylish modern family bathroom with shower over bath. Large driveway and garden to the front providing space for several vehicles, patio area to the rear with a sizeable lawned garden and hard standing at the rear gate for further vehicle storage. Council Tax Band A, EPC Grade D Long Term Let.

£1,000

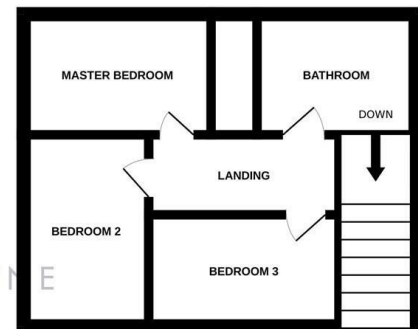
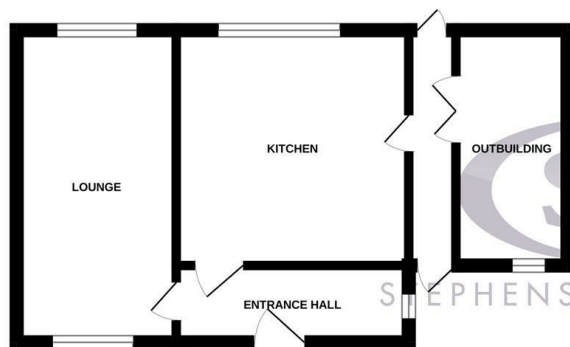






GROUND FLOOR

1ST FLOOR



Whilst every attempt has been made to ensure the accuracy of the floorplan contained here, measurements of doors, windows, rooms and any other items are approximate and no responsibility is taken for any error, omission or mis-statement. This plan is for illustrative purposes only and should be used as such by any prospective purchaser. The services, systems and appliances shown have not been tested and no guarantee as to their operability or efficiency can be given.
Made with Metropix 62025

Stephenson Browne Estate Agents

Newcastle
56 Merrial Street, Newcastle under Lyme
Staffordshire, ST5 2AJ
Tel: 01782 625734

Sandbach
38 High Street, Sandbach
Cheshire, CW11 1AN
Tel: 01270 763200

Alsager
13 Crewe Road, Alsager
Stoke on Trent, ST7 2EW
Tel: 01270 883130

NOT TO SCALE These floor plans are given as a guide only. Full completed measurements and details should be verified by any intending purchasers legal representative.

NOTICE: Stephenson Browne for themselves and for the vendors or lessors of this property whose agents they are give notice that: (1) the particulars are set out as a general guideline only for the guidance of intending purchasers or lessees, and do not constitute, nor constitute part of, an offer or contract; (2) all descriptions, dimensions, references to condition and necessary permissions for use and occupation, and other details are given in good faith and are believed to be correct but any intending purchasers or tenants should not rely on them as statements or representations of fact but must satisfy themselves by inspection or otherwise as to the correctness of each theme; (3) no person in the employment of Stephenson Browne has any authority to make representation or warranty whatever in relation to this property. (4) fixtures & fittings are subject to a formal list supplied by the vendors solicitors.