



297A Junction Road, Burgess Hill, Sussex, RH15 0PY

£850 Per Calendar Month

www.psphomes.co.uk



PSPhomes

A delightful one bedroom apartment in a most convenient location. Situated towards the end of Junction Road this property offers easy access to Wivelsfield main line station, local shops and Manor Field Primary School. Offer unfurnished. Available late July. EPC RATING "D"

Front door to the Entrance hall.

Staircase rising to the first floor.

LIVING ROOM 12'6" x 13'6" (max)

Windows to the side and rear. Feature fire surround. Radiator. Hatch to the large roof space. Laminate flooring.

BEDROOM 13'6" (max) x 12'0"

Replacement double glazed window to the front. Radiator. Laminate flooring.

KITCHEN 7'6" x 9'0" (max)

Range of wall and floor units, complemented with ample work surface and tiled splashbacks. Stainless steel sink unit. Space and services for appliances. Wall mounted gas fired boiler. Window to the side.

BATHROOM

Suite comprising enclosed shower, low level WC and wash hand basin. Radiator. Window with opaque glass to the rear.

COUNCIL TAX

Council Tax Band "B" £1712.84 for 2024/2025

PERMITTED TENANTS PAYMENTS

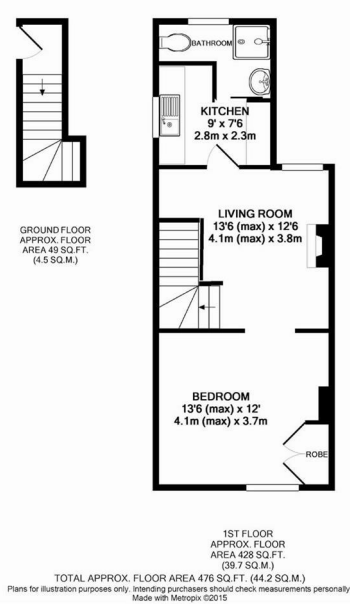
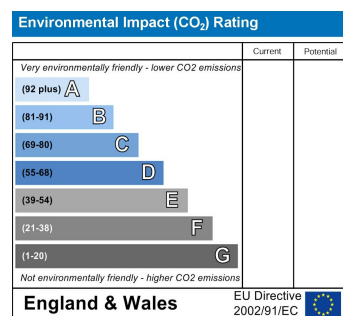
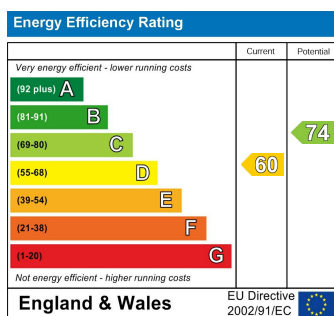
Permitted Tenants Fees:

Before the tenancy starts (Payable to PSPhomes 'the agent')

Holding deposit - £196.00 (one weeks rent)

Deposit - £980.00(five weeks rent)

The holding deposit will be refunded against the first month's rent but can be retained if the applicant withdraws from the property, fails the reference checks due to false or misleading information or fails the Right to Rent checks.



VIEWING BY APPOINTMENT WITH PSP HOMES
54 Church Road, Burgess Hill, West Sussex, RH15 9AE. TELEPHONE 01444 250999
OPEN SEVEN DAYS A WEEK www.psphomes.co.uk

Much care is taken in the preparation of our particulars, but we cannot guarantee that the information given is accurate. Property details are issued as a general guide only and may not form any part of an offer or contract. We recommend that intending purchasers check details personally.