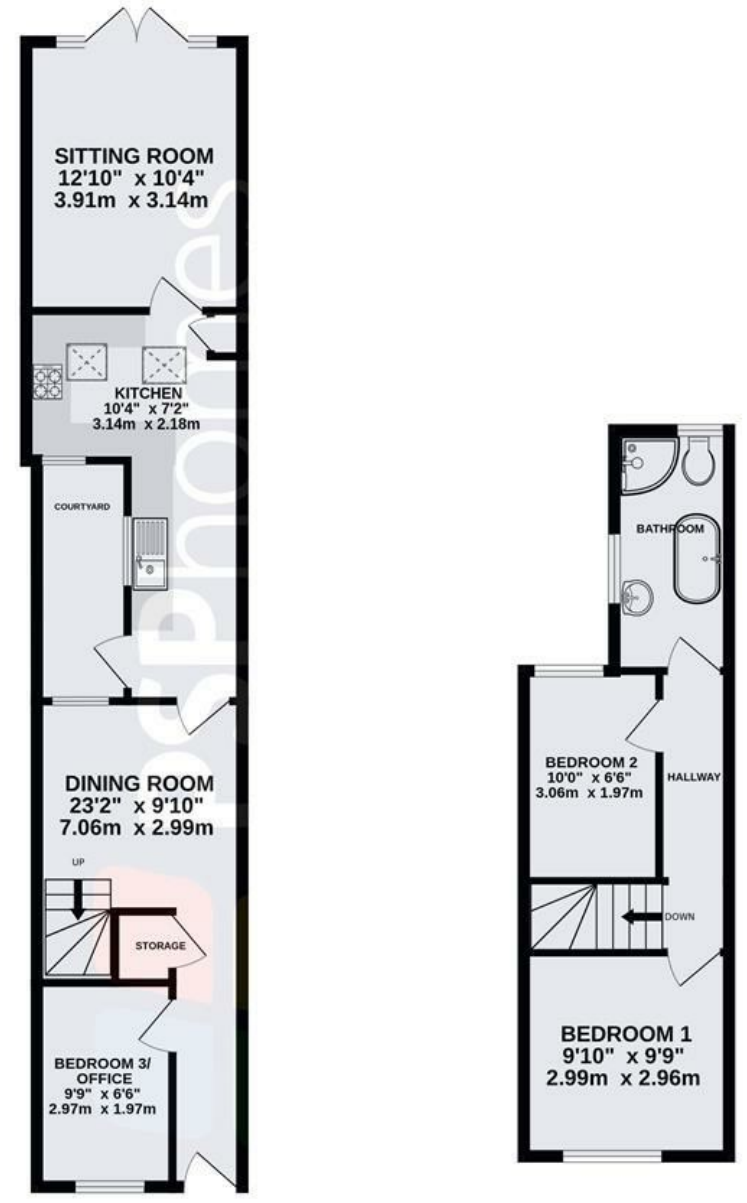
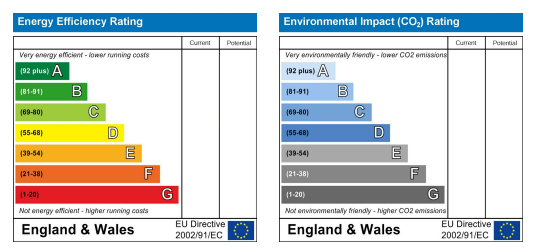


GROUND FLOOR
545 sq ft. (50.6 sq.m.) approx.

1ST FLOOR
290 sq ft. (26.9 sq.m.) approx.



TOTAL FLOOR AREA: 835 sq ft. (77.6 sq.m.) approx.
Plans for illustration purposes only. Intending purchasers should check measurements personally.
Made with Metropix ©2024



185 Lower Church Road, Burgess Hill, RH15 9AA

Price £325,000 Freehold



VIEWING BY APPOINTMENT WITH PSP HOMES
54 Church Road, Burgess Hill, West Sussex, RH15 9AE. TELEPHONE 01444 250999
OPEN SEVEN DAYS A WEEK www.psphomes.co.uk

Much care is taken in the preparation of our particulars, but we cannot guarantee the information given is accurate.
Property details are issued a general guide only and may not form any part of an offer or contract. We recommend intending purchasers check details personally.

www.psphomes.co.uk



185 Lower Church Road, Burgess Hill, RH15 9AA

What We Like.

- * Beautifully presented throughout.
- * Stunning refitted kitchen.
- * Luxurious modern bathroom.
- * Two double bedrooms.
- * 60ft south facing rear garden.
- * Very convenient location.

The House.

A stunning two/three bedroom terraced period property located in a very convenient position within an easy walk of Burgess Hill's town centre. The property has been vastly improved by the present owners and the accommodation is considered to be in very good order throughout. Highlights include a stunning refitted kitchen, a luxurious modern bathroom and separate reception rooms. Outside there is a deep south facing rear garden as well as a separate, private courtyard area. Lower Church Road is very conveniently located to take advantage of all Burgess Hill's comprehensive facilities.

The Ground Floor.

From the entrance hall the first room you enter is the office/bedroom three that offers flexibility in its use. There is a useful storage cupboard within the entrance hall before you enter the dining room. This provides space for a good size table and chairs, has a window overlooking the courtyard and a staircase rising to the first floor. The stunning kitchen was refitted in 2023 and provides a comprehensive range of contemporary fitted units, worksurfaces, integrated appliances and a door leading onto the private, secluded courtyard. Beyond this is the comfortable living room with feature French windows opening onto the south facing rear garden. The ground floor has quality hardwood flooring throughout.

The First Floor.

On the first floor is a hallway offering access to the two bedrooms. The main bedroom is a good size double with an aspect to the front whilst the second, also a double has a view to the rear. Both rooms are served by a luxurious modern fitted bathroom featuring both a panel bath and separate enclosed shower.



Gardens.

To the rear of the property is a south facing enclosed garden that extends to approximately 60ft. There is a recently fitted decking area, raised vegetable and flower beds as well as a greenhouse and garden shed. Off of the kitchen is a private enclosed courtyard area which is ideal for a variety of uses including morning coffee on a sunny day.

Location.

The property is located in Lower Church Road and is conveniently located to take advantage of highly regarded primary and senior schools. The Triangle Leisure Centre and A23 are easy to access. Both the town's mainline stations are within close proximity whilst the shopping centre with its wide variety of amenities including a Waitrose Supermarket is within walking distance. Burgess Hill is surrounded by stunning countryside and picturesque villages. There are very good road and rail connections to London, Brighton, Gatwick Airport and more locally, Lewes and Haywards Heath.

Further Benefits.

Further benefits include a modern gas central heating system with new boiler fitted in 2021 and double glazing.

The Finer Details.

Tenure: Freehold

Title Number: SX148903

Local Authority: Mid Sussex District Council

Council Tax Band: C

Available Broadband Speed: Ultrafast (up to 1000mbps download)

We believe this information is correct but recommend checking details personally.

