



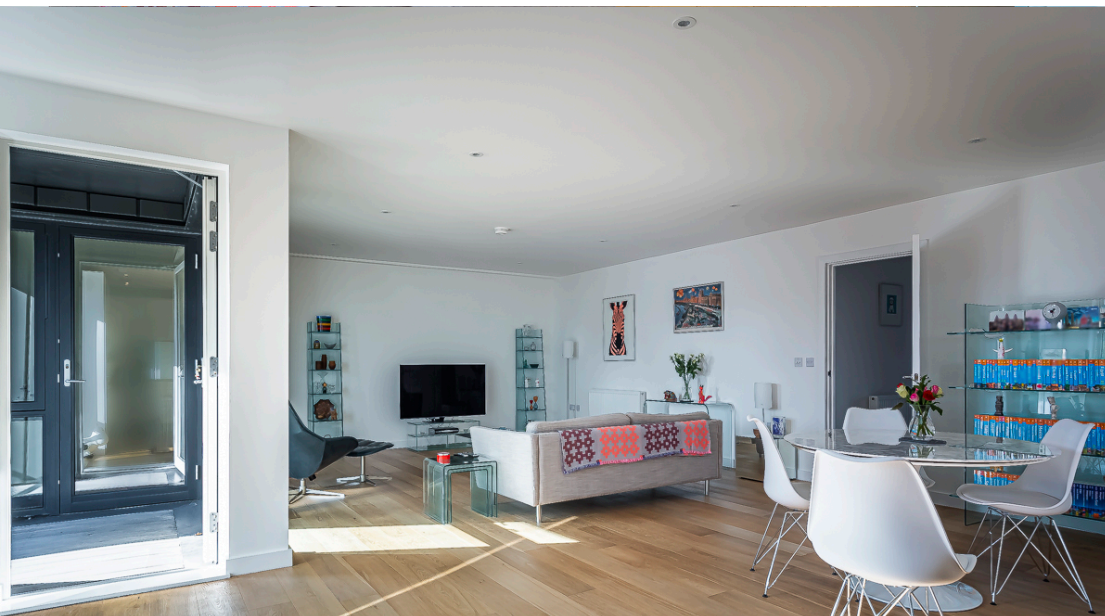
3

[[bedrooms\_label]]



3

[[bathrooms\_label]]



Now on the market is this beautiful, clean 3 bedroom duplex located on the 5th and 6th floors in the Limehouse/Westferry area. The ground floor portion of this property consists of a large bedroom and dressing area that both lead to a balcony. Additionally, the ground floor also offers a storage room and a bathroom.

Upstairs to the 1st floor part of this stunning property, you have 2 well proportioned bedrooms with fitted wardrobes and one en suite bathroom. There is also an additional family bathroom on this floor too. The living area is a large, open plan kitchen and living room leading to a balcony.

This property is offered fully furnished without parking.

Closest Stations: Limehouse

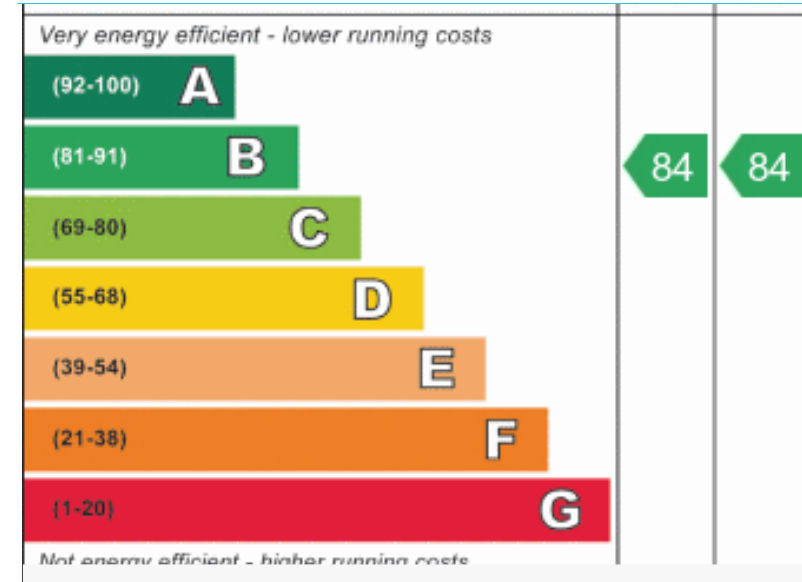
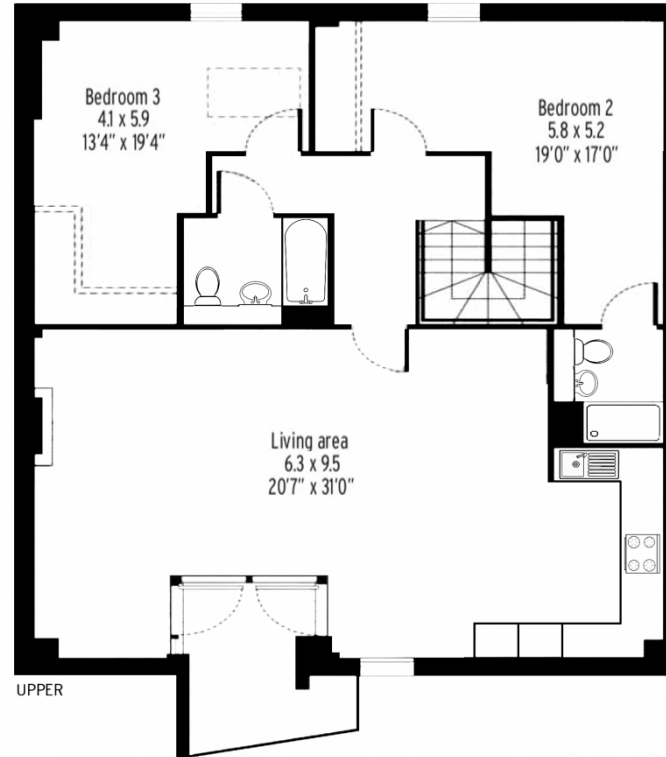
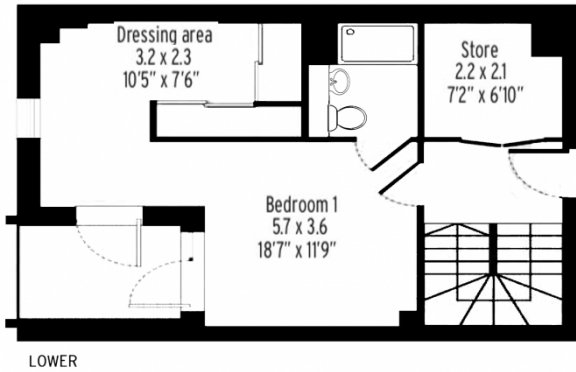
Area: Limehouse, Westferry, Poplar, Canary Wharf

[[value]] |

**Rope Court, E14**  
**3 Bedrooms Penthouse Duplex**

**5th and 6th Floor**

**Total Approx. Internal Floor Area**  
**148.8 Sqm / 1602 Sqft**



**For more info**



Whilst every attempt has been made to ensure the accuracy of the floor plan contained here, measurements of doors, windows, rooms and any other items are approximate and no responsibility is taken for any error, omission, or mis-statement. This plan is for illustrative purposes only and should be used as such by any prospective purchaser.

