



PropertyLine



90 Liquorpond Street

, Boston, PE21 8UJ

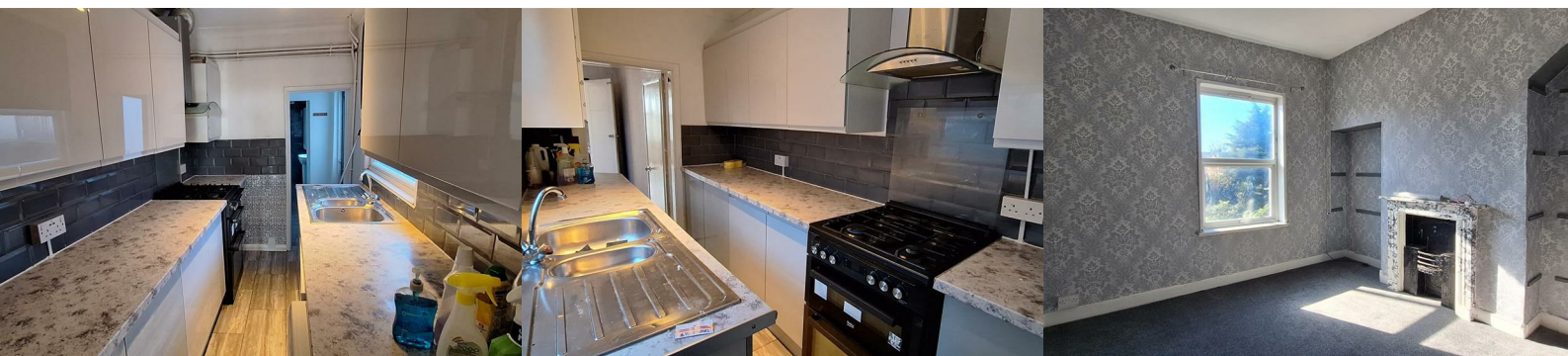
£900



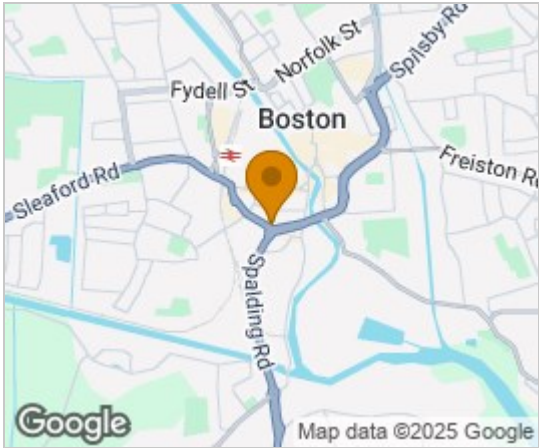
Nestled in the charming area of Liquorpond Street, Boston, this delightful mid-terrace house offers a perfect blend of character and modern living. Built in 1900, the property boasts a generous 850 square feet of well-designed space, making it an ideal home for families or professionals seeking comfort and convenience.

Upon entering, you are greeted by two inviting reception rooms, perfect for entertaining guests or enjoying quiet evenings with family. The layout flows seamlessly, providing a warm and welcoming atmosphere throughout. The house features three spacious bedrooms, each offering ample natural light and the potential for personalisation to suit your style. Also a loft room can be used for office or playroom

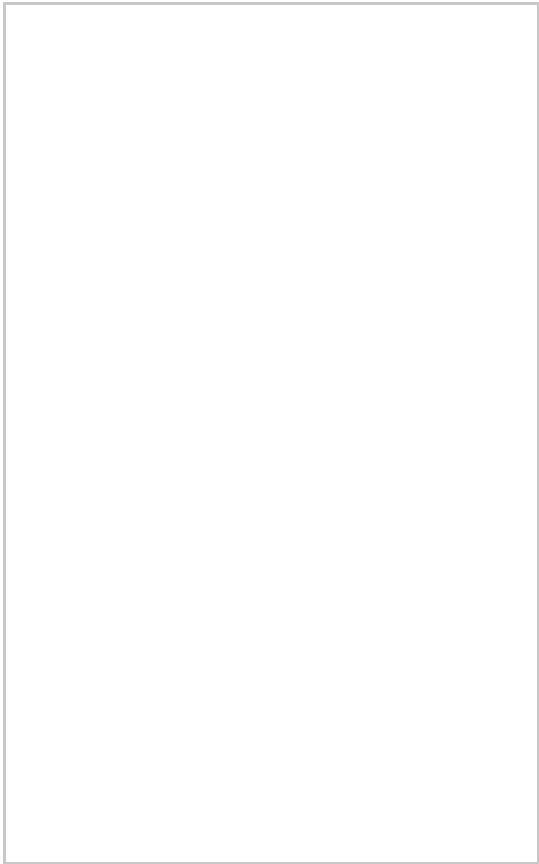
The location on Liquorpond Street is particularly appealing, with easy access to local amenities, schools, and transport links, making it a convenient choice for daily living. This home presents a wonderful opportunity to embrace a lifestyle in a vibrant community while enjoying the charm of a period property.



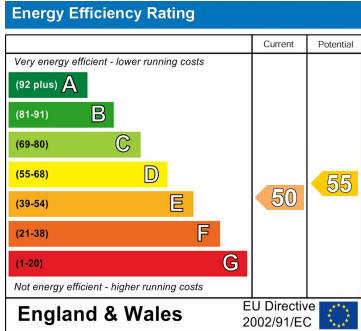
Area Map



Floor Plans



Energy Efficiency Graph



These particulars, whilst believed to be accurate are set out as a general outline only for guidance and do not constitute any part of an offer or contract. Intending purchasers should not rely on them as statements of representation of fact, but must satisfy themselves by inspection or otherwise as to their accuracy. No person in this firms employment has the authority to make or give any representation or warranty in respect of the property.